



**THIS BROCHURE PROVIDED BY CRAIG DELGER - LUXURY REAL ESTATE EXPERT**

*Powered by Data, Technology, and Local Expertise*



## 5204 Patterson Road, Bozeman MT 59718

\$4,997,000  
Acres: ± 40.573  
MLS#: 387017

# INTRODUCTION

Explore this beautiful, level 40+ acres just moments from Downtown Bozeman. Solidly built, custom home by Clare Daines. This 7,500 sq ft home, loaded with lavish amenities and nestled in a tranquil corner of Bozeman, you'll relish stunning mountain vistas, expansive farmlands, and the serenity of country living. Middle Creek Ditch makes up the southern boundary; babbling water is diverted from Hyalite creek for your summer enjoyment of live water Jun-Nov. Despite its rural setting, the property offers convenient access to numerous trailheads and downtown conveniences. Crafted with entertaining in mind, the house boasts a chef's kitchen complete with double ovens, Double fridges, Double freezers, ample counter space, a center island featuring 2 prep sinks, 2 dishwashers and seating for 7. A spacious pantry ensures you're always well-stocked. The living room's soaring vaulted ceiling creates a welcoming ambiance with large south facing windows and floor to ceiling stone fireplace. The backyard serves as a haven for relaxation, boasting an in-ground hot tub and a firepit perfect for late-night marshmallow toasting and stargazing. Indoors, entertainment options abound with a Billiards Room and a dedicated theater room featuring comfortable tiered seating for a cinematic home experience. Meanwhile, the study, highlighted by a fireplace and floor-to-ceiling built-in shelving, offers a cozy sanctuary. Retreat to the primary bedroom suite, a personal oasis with a spa-like bathroom offering indulgence and escape. Alternatively, start your day with a visit to the wellness room, equipped with peaceful views and exercise equipment, while the patio invites you to invigorating yoga sessions and workouts. For those working remotely, the private office caters to professional needs. Upstairs, 5B|3B provide comfortable accommodations plus a laundry room and large storage room. Main floor, a sprawling mudroom/laundry off the 3-car heated garage adds practicality, while a specially designed enclosed outdoor play yard caters to cherished feline friends. Situated across 40+ acres, the property also includes a guest house with 3B|2B and a two-car garage. This guest house presents an appealing rental prospect, offering panoramic views of the Bridger Mountains and an easy commute to the heart of Downtown Bozeman. Property receives \$40,000 in revenue from rental and hay. Bring your livestock & horses and live the Montana dream!





## FEATURES

<b>Status:</b>	Active
<b>Type:</b>	Farm
<b>Sub Type:</b>	Single Family
<b>Acres:</b>	± 40.573
<b>View:</b>	Farmland, Meadow, Mountains, Rural, River, SouthernExposure, CreekStream, Valley
<b>Listing Date:</b>	2023-08-24
<b>Listing Agent:</b>	Taunya Fagan of Taunya Fagan RE @ Estate House

<b>Style:</b>	Custom
<b>Year Built:</b>	2016
<b>Beds:</b>	6
<b>Baths:</b>	5
<b>Appliances:</b>	Dryer, Dishwasher, Freezer, Disposal, Microwave, Range, Refrigerator, Washer
<b>Heating/Cooling:</b>	ForcedAir CentralAir

## LOCATION



Address: 5204 Patterson Road, Bozeman MT 59718



# PHOTOS















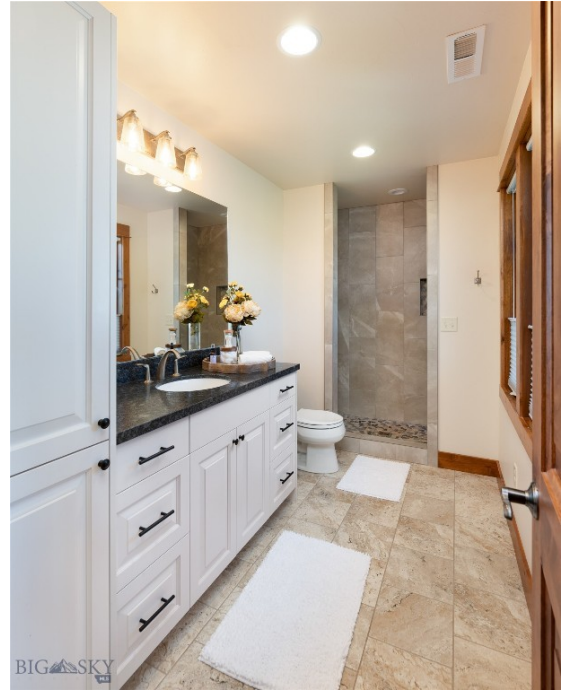


















# BOZEMAN LIFESTYLE™



Bozeman lifestyle is considered one of the most appealing in the West. Bozeman is routinely ranked as one of the best places to live, best places to retire, best place to raise a kid, best place to visit, best ski town, and best college town. Big Sky Resort is also frequently recognized as one of the world's best ski resorts, most affordable ski resort, and best ski resort for families.

Bozeman is known for its friendly people, sense of community, excellent schools and quality of life. The town has a western charm and a relaxed attitude. The Bozeman Quality Of Life index rates very well due to access to Outdoor Recreation, Amusement, Culture, Education, Medical, Religion, Restaurants and Weather. Bozeman has the cultural amenities of a local symphony and ballet, an energetic downtown restaurant and art scene, and the vibrancy of a college community. Located 16 miles north of Bozeman in the Bridger Canyon area is Bridger Bowl, a home-grown, nonprofit community ski area operating since 1955. Big Sky Resort is less than an hour away and is also frequently recognized as one of the world's best ski resorts, most affordable ski resort, and best ski resort for families.

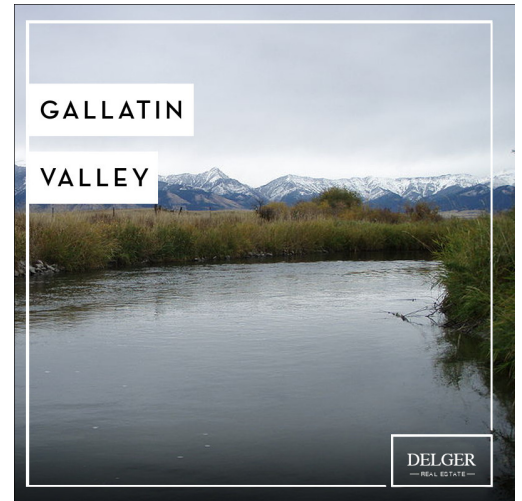
When it comes to outdoor recreation Bozeman is surrounded by 6 different mountain ranges, which offer vast winter and summer recreational opportunities.

A world class destination for fly fishing, Bozeman is home to the world's most famous Blue Ribbon fly fishing rivers, spring creeks and lakes on Earth. The Yellowstone, Madison, Gallatin, Jefferson, Beaverhead, and Missouri rivers are all nearby.

Bozeman has 60 miles of "Main Street To Mountains" trail system in town, surrounded by 6.9 million acres of public land.

# GALLATIN COUNTY

Located in a sweeping valley in the heart of the Rocky Mountains, Gallatin County is the most populated and fastest growing county in scenic southwest Montana. Gallatin Valley has a rich history. Native Americans referred to this area as the "Valley of Flowers". The name seems appropriate because of the great variety of wild flowers found on the mountainsides as well as in the valley. Gallatin Valley derives its name from the Gallatin River, one of the forks of the Missouri river that rises in Yellowstone Park. The Gallatin river, Jefferson river, and Madison river all merge at the town of Three Forks to form the Missouri River. Lewis and Clark named the rivers on their famous expedition to this part of the world in 1805.



There are approximately 1,682,048 acres (2,500 square miles) in Gallatin County including over 16,500 acres in surface water. Approximately 800,000 acres in Gallatin County are owned by the public and managed by several local and national agencies including the Bureau of Land Management, U.S. Forest Service, National Park Service, Montana Fish Wildlife & Parks, Montana Department of Transportation, Department of Natural Resources & Conservation and various local governments. The U.S. Forest Service is the largest land holder in Gallatin

County, currently managing over 665,000 acres. In addition to the Forest Service, various state departments manage approximately 61,000 acres. The Bureau of Land Management holds just over 9,000 acres and an additional 1,600 acres belongs to local governments. On the southern edge of Gallatin County is Yellowstone National Park. Yellowstone National Park is one of the world's primary wildlife preserves and has the greatest concentration of geysers and hot springs in America. Yellowstone National Park is 2,219,789 acres in size (Larger than Rhode Island and Delaware combined). Over 97,600 acres of Yellowstone National Park is located within Gallatin County.

# LUXURY REAL ESTATE EXPERT

Delger Real Estate sold over \$155 Million in Real Estate in 2016-2023. Recognized experts in Internet Marketing and Technology, Delger Real Estate are able to generate maximum exposure for their real estate listings. The result: according to ListHub, Delger Real Estate listings outperform 98% of the market. We encourage you to contact Craig to learn more about real estate in Bozeman and the surrounding areas.

*POWERED BY INTELLIGENT MARKETING, PROPRIETARY TECHNOLOGY, AND LOCAL EXPERTISE*



**Craig Delger**  
BROKER / OWNER  
406.581.7504  
craigdelger@gmail.com

v1.01-2024-11-23