



**THIS BROCHURE PROVIDED BY CRAIG DELGER - BOZEMAN REAL ESTATE EXPERT**

*Powered by Data, Technology, and Local Expertise*



806 W Alderson, Bozeman MT 59715

\$850,000

Acres: ±

MLS#: 389167

## INTRODUCTION

This beautiful and light filled condo is located in the heart of historic downtown Bozeman and just steps from Montana State University. All new construction with 1,650 sq ft; 2 beds plus an extra room and 2.5 baths; including a fully finished and heated 2 car garage! The first floor offers a fantastic flex space that can be used as an office, exercise room, mud room, space to store your bikes, skis, you name it; use it for whatever you desire. The extra room also includes artwork from local artist Averi Iris; you'll enjoy your own special Montana art! The main floor is a huge open space with 9' ceilings and lots of natural light streaming in through the contemporary and beautiful Anderson windows. The kitchen has been thoughtfully designed with beautiful kitchen cabinetry, a stylish tile backsplash and white Quartz countertops including a waterfall edge on the large island, which is perfect for family, friends and entertaining. The professional style GE Cafe appliances include a wine refrigerator and a commercial style 36" range & hood to create all your culinary masterpieces. The top floor includes a master suite with custom tiled showers, undermount vanity motion detection lighting in the bathroom as well as radiant floor heat. The vaulted ceilings and shiplap walls give the master suite a warm, cozy and comfortable feel. The junior suite has its own wonderful bathroom with the same undermount vanity lighting and custom tile work. Move in and enjoy the downtown experience of restaurants, bars, breweries, the library, markets, shops, walking trails etc. The beauty and simplicity of this home offers all of the fun without the urgency to take care of a yard, garden or other exterior work; it's the beauty of condo living. This is a must see! Seller will consider potential rate buy down options with approved offers!



## FEATURES

<b>Status:</b>	Active
<b>Type:</b>	Residential
<b>Sub Type:</b>	Condominium
<b>Water Features:</b>	None
<b>Listing Date:</b>	2024-01-22
<b>Listing Agent:</b>	Jason Basye of Bozeman Real Estate Group

<b>Year Built:</b>	2024
<b>Beds:</b>	2
<b>Baths:</b>	3
<b>Appliances:</b>	Dishwasher, Disposal, Microwave, Range, Refrigerator, WineCooler
<b>Heating/Cooling:</b>	Baseboard Electric ForcedAir NaturalGas CentralAir

## LOCATION



Address: 806 W Alderson, Bozeman MT 59715

# PHOTOS

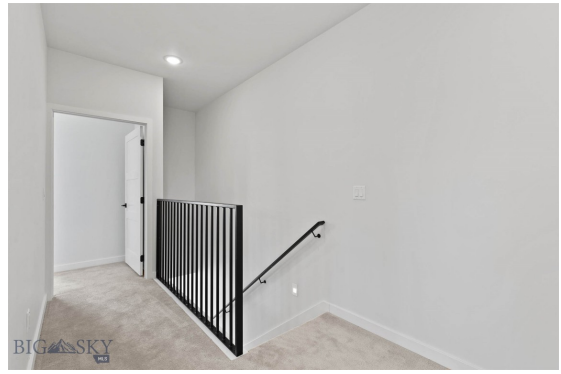




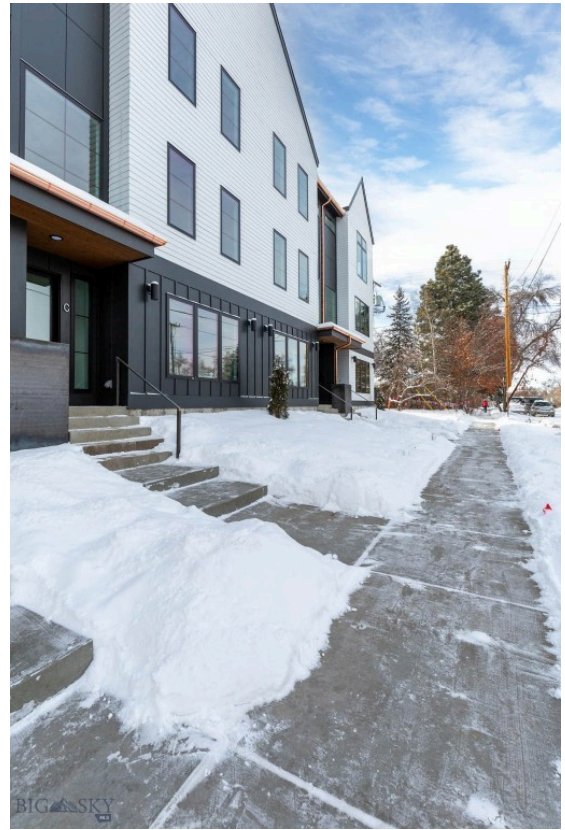












# BOZEMAN LIFESTYLE™



Bozeman lifestyle is considered one of the most appealing in the West. Bozeman is routinely ranked as one of the best places to live, best places to retire, best place to raise a kid, best place to visit, best ski town, and best college town. Big Sky Resort is also frequently recognized as one of the world's best ski resorts, most affordable ski resort, and best ski resort for families.

Bozeman is known for its friendly people, sense of community, excellent schools and quality of life. The town has a western charm and a relaxed attitude. The Bozeman Quality Of Life index rates very well due to access to Outdoor Recreation, Amusement, Culture, Education, Medical, Religion, Restaurants and Weather. Bozeman has the cultural amenities of a local symphony and ballet, an energetic downtown restaurant and art scene, and the vibrancy of a college community. Located 16 miles north of Bozeman in the Bridger Canyon area is Bridger Bowl, a home-grown, nonprofit community ski area operating since 1955. Big Sky Resort is less than an hour away and is also frequently recognized as one of the world's best ski resorts, most affordable ski resort, and best ski resort for families.

When it comes to outdoor recreation Bozeman is surrounded by 6 different mountain ranges, which offer vast winter and summer recreational opportunities.

A world class destination for fly fishing, Bozeman is home to the world's most famous Blue Ribbon fly fishing rivers, spring creeks and lakes on Earth. The Yellowstone, Madison, Gallatin, Jefferson, Beaverhead, and Missouri rivers are all nearby.

Bozeman has 60 miles of "Main Street To Mountains" trail system in town, surrounded by 6.9 million acres of public land.

# GALLATIN COUNTY

Located in a sweeping valley in the heart of the Rocky Mountains, Gallatin County is the most populated and fastest growing county in scenic southwest Montana. Gallatin Valley has a rich history. Native Americans referred to this area as the "Valley of Flowers". The name seems appropriate because of the great variety of wild flowers found on the mountainsides as well as in the valley. Gallatin Valley derives its name from the Gallatin River, one of the forks of the Missouri river that rises in Yellowstone Park. The Gallatin river, Jefferson river, and Madison river all merge at the town of Three Forks to form the Missouri River. Lewis and Clark named the rivers on their famous expedition to this part of the world in 1805.



There are approximately 1,682,048 acres (2,500 square miles) in Gallatin County including over 16,500 acres in surface water. Approximately 800,000 acres in Gallatin County are owned by the public and managed by several local and national agencies including the Bureau of Land Management, U.S. Forest Service, National Park Service, Montana Fish Wildlife & Parks, Montana Department of Transportation, Department of Natural Resources & Conservation and various local governments. The U.S. Forest Service is the largest land holder in Gallatin

County, currently managing over 665,000 acres. In addition to the Forest Service, various state departments manage approximately 61,000 acres. The Bureau of Land Management holds just over 9,000 acres and an additional 1,600 acres belongs to local governments. On the southern edge of Gallatin County is Yellowstone National Park. Yellowstone National Park is one of the world's primary wildlife preserves and has the greatest concentration of geysers and hot springs in America. Yellowstone National Park is 2,219,789 acres in size (Larger than Rhode Island and Delaware combined). Over 97,600 acres of Yellowstone National Park is located within Gallatin County.

# BOZEMAN REAL ESTATE EXPERT

Delger Real Estate sold over \$155 Million in Real Estate in 2016-2023. Recognized experts in Internet Marketing and Technology, Delger Real Estate are able to generate maximum exposure for their real estate listings. The result: according to ListHub, Delger Real Estate listings outperform 98% of the market. We encourage you to contact Craig to learn more about real estate in Bozeman and the surrounding areas.

*POWERED BY INTELLIGENT MARKETING, PROPRIETARY TECHNOLOGY, AND LOCAL EXPERTISE*



**Craig Delger**  
BROKER / OWNER  
406.581.7504  
craigdelger@gmail.com

v1.01-2024-07-27