

# DELGER

— REAL ESTATE —

BOZEMAN MONTANA



Craig Delger  
BROKER / OWNER  
406.581.7504

**THIS BROCHURE PROVIDED BY CRAIG DELGER - LUXURY REAL ESTATE EXPERT**

*Powered by Data, Technology, and Local Expertise*



## 2999 Penwell Bridge Road, Belgrade MT 59714

\$6,835,000

Acres: ± 315.84

MLS#: 392938

# INTRODUCTION

Discover this picturesque legacy estate located just outside of Bozeman. Spanning over 315 acres, this property, offers hay and grain production in addition to other crops which ensure income opportunities while maintaining exceptional privacy and breathtaking views of the Gallatin Valley. The conservation easement in place protects the land from development, ensuring its agricultural and environmental value is preserved for future generations. Adding to its appeal, the South Fork Ross Creek meanders through the property, providing an excellent water source for irrigation and enhancing the scenic beauty of the farm. The estate includes a detached shop equipped with solar panels, reducing energy costs. In addition to its agricultural benefits, the property features a luxurious stunning 4,000+ sq ft custom home. Once inside you will find vaulted ceilings and an open-concept layout that seamlessly integrates a formal dining area, an eat-in kitchen, an office/guest bedroom, and an incredible kitchen layout. The kitchen is equipped with all major appliances including but not limited to; dual wall ovens, a warming drawer, a range hood, and tons of cabinetry accented by quartz counters making it the heart of the home. Enjoy summer days on the expansive back patio, which is designed with stamped concrete and offers unrivaled views of the Bridger Mountain range. The patio is stubbed for gas, perfect for grilling to your heart's content. Retreat to the master suite, featuring an oversized walk-in closet with custom built-ins, luxurious tile work, a soaker tub, a floor-to-ceiling tile shower, and in-floor heating in the master bath. This suite also connects to a versatile secondary room that can serve as an office or nursery. Two additional bedrooms on the main level share a Jack and Jill bathroom, also with in-floor heating. Upstairs, a massive bonus room provides endless entertainment possibilities, complete with space for a pool table. The three-stall garage offers ample space for vehicles and equipment.



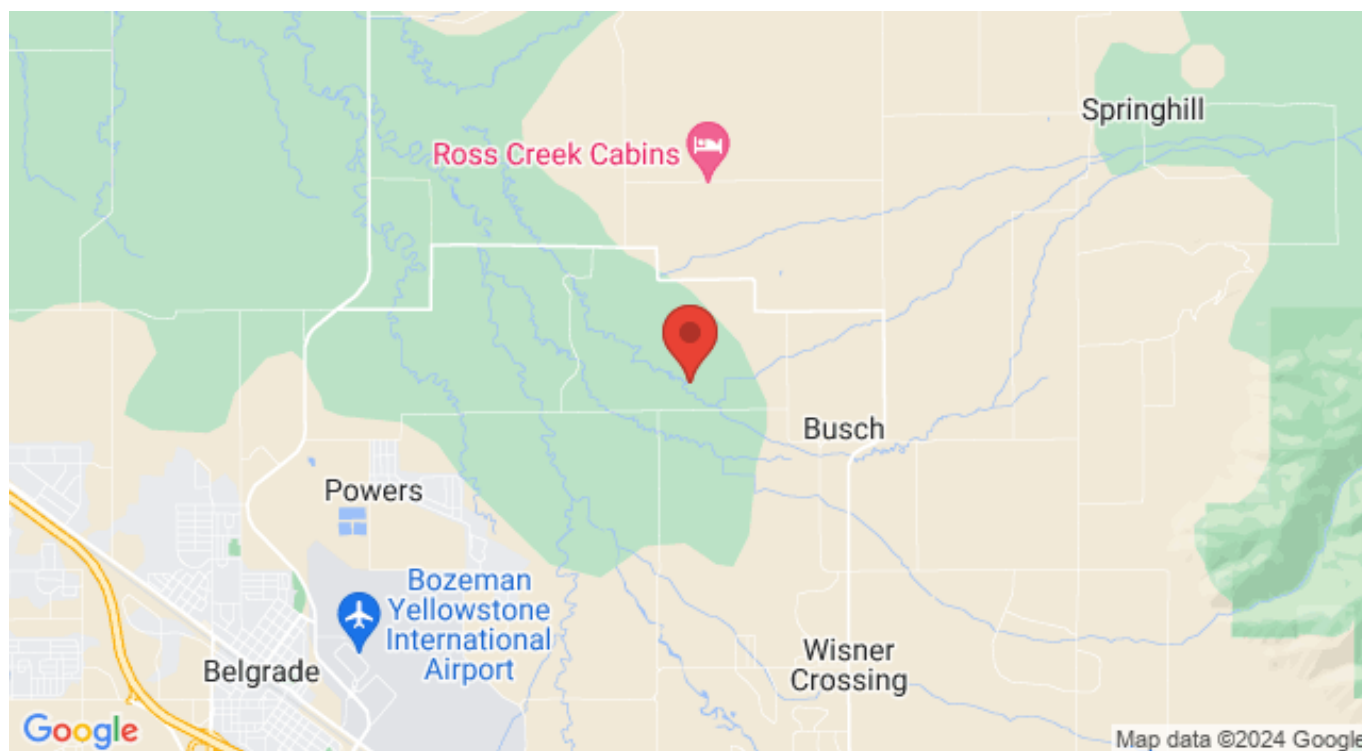


## FEATURES

<b>Status:</b>	Active
<b>Type:</b>	Farm
<b>Sub Type:</b>	Single Family
<b>Acres:</b>	± 315.84
<b>View:</b>	Farmland, Meadow, Mountains, Rural, River, CreekStream
<b>Water Features:</b>	Creek
<b>Listing Date:</b>	2024-06-19
<b>Listing Agent:</b>	Tamara Williams of Tamara Williams and Company

<b>Style:</b>	Ranch
<b>Year Built:</b>	2013
<b>Beds:</b>	3
<b>Baths:</b>	4
<b>Appliances:</b>	Dryer, Dishwasher, Disposal, Microwave, Range, Refrigerator, WaterSoftener, Washer
<b>Heating/Cooling:</b>	ForcedAir CentralAir, CeilingFans

## LOCATION

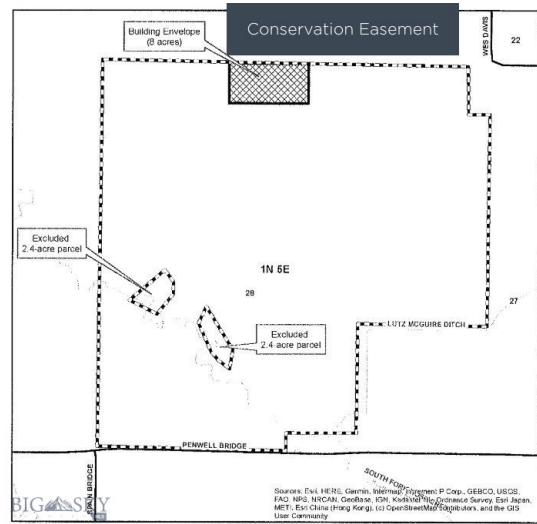


Address: 2999 Penwell Bridge Road, Belgrade MT 59714



# PHOTOS

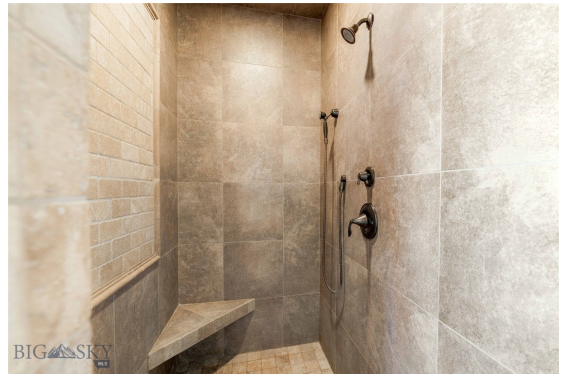










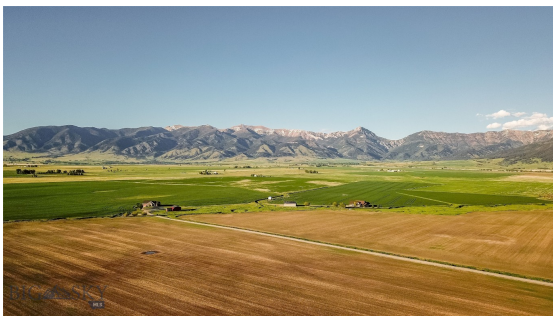


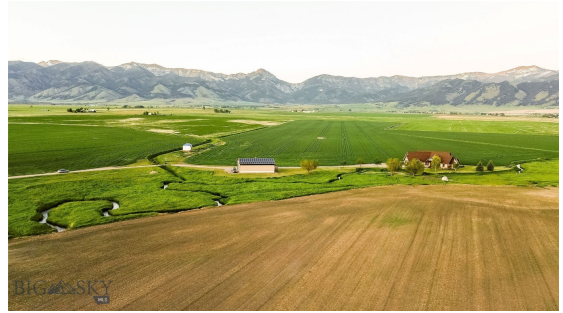


















# BELGRADE LIFESTYLE



With a population of about 8,000 people, Belgrade has the amenities and services buyers expect for a town of this size. The Belgrade School District includes Elementary Schools, a Middle School, and a High School. Belgrade neighborhoods and surrounding areas are experiencing significant population growth, with numerous new subdivisions under development. Belgrade, Montana is located just 11 miles to the northwest of Bozeman, Montana making it a desirable location. Many Belgrade Homes for sale have views of the mountain ranges and open land surrounding the Gallatin Valley.

Homes in Belgrade offer convenient access to the Bozeman Yellowstone International Airport, and to the Interstate. Belgrade has a small downtown area with grocery stores, restaurants, and shopping. Belgrade is just over 10 minutes from Bozeman's N 19th Ave shopping district which includes stores like Costco, Target, etc.

When it comes to outdoor recreation Belgrade is surrounded by 6 different mountain ranges, which offer vast winter and summer recreational opportunities. Bridger Bowl, a home-grown, nonprofit community ski area operating since 1955 is located 24 miles from Belgrade. Big Sky Resort is 44 miles away and is also frequently recognized as one of the world's best ski resorts, most affordable ski resort, and best ski resort for families.

The world's most famous Blue Ribbon fly fishing rivers (Yellowstone, Madison, Gallatin, Jefferson, Beaverhead, and Missouri rivers) are all nearby making this area a world class destination for fly fishing. Yellowstone National Park (2.2 million acres) is located 90 miles south of Belgrade, Montana.

The median price of a single family home in Belgrade is 30% lower priced than single family homes in Bozeman and appeals to buyers seeking lower priced real estate, yet still want to be close to the amenities of Bozeman.

# GALLATIN COUNTY

Located in a sweeping valley in the heart of the Rocky Mountains, Gallatin County is the most populated and fastest growing county in scenic southwest Montana. Gallatin Valley has a rich history. Native Americans referred to this area as the “Valley of Flowers”. The name seems appropriate because of the great variety of wild flowers found on the mountainsides as well as in the valley. Gallatin Valley derives its name from the Gallatin River, one of the forks of the Missouri river that rises in Yellowstone Park. The Gallatin river, Jefferson river, and Madison river all merge at the town of Three Forks to form the Missouri River. Lewis and Clark named the rivers on their famous expedition to this part of the world in 1805.



There are approximately 1,682,048 acres (2,500 square miles) in Gallatin County including over 16,500 acres in surface water. Approximately 800,000 acres in Gallatin County are owned by the public and managed by several local and national agencies including the Bureau of Land Management, U.S. Forest Service, National Park Service, Montana Fish Wildlife & Parks, Montana Department of Transportation, Department of Natural Resources & Conservation and various local governments. The U.S. Forest Service is the largest land holder in Gallatin

County, currently managing over 665,000 acres. In addition to the Forest Service, various state departments manage approximately 61,000 acres. The Bureau of Land Management holds just over 9,000 acres and an additional 1,600 acres belongs to local governments. On the southern edge of Gallatin County is Yellowstone National Park. Yellowstone National Park is one of the world’s primary wildlife preserves and has the greatest concentration of geysers and hot springs in America. Yellowstone National Park is 2,219,789 acres in size (Larger than Rhode Island and Delaware combined). Over 97,600 acres of Yellowstone National Park is located within Gallatin County.

# LUXURY REAL ESTATE EXPERT

Delger Real Estate sold over \$155 Million in Real Estate in 2016-2023. Recognized experts in Internet Marketing and Technology, Delger Real Estate are able to generate maximum exposure for their real estate listings. The result: according to ListHub, Delger Real Estate listings outperform 98% of the market. We encourage you to contact Craig to learn more about real estate in Belgrade and the surrounding areas.

*POWERED BY INTELLIGENT MARKETING, PROPRIETARY TECHNOLOGY, AND LOCAL EXPERTISE*



**Craig Delger**  
BROKER / OWNER  
406.581.7504  
craigdelger@gmail.com

v1.01-2024-07-03