

DELGER

— REAL ESTATE —

BOZEMAN MONTANA



Craig Delger
BROKER / OWNER
406.581.7504

THIS BROCHURE PROVIDED BY CRAIG DELGER - BELGRADE REAL ESTATE EXPERT

Powered by Data, Technology, and Local Expertise



BIG SKY
MLS

1719 Dillon Avenue, Belgrade MT 59714

\$725,000

Acres: ± 0.2296

MLS#: 393513

DELGER
— REAL ESTATE —
BOZEMAN MONTANA

DelgerRealEstate.com

REALTOR®
MLS
Information deemed reliable,
but not guaranteed

INTRODUCTION

Come experience why so many people are calling Ryen Glen home. This exquisite 4-bedroom, 3-bathroom home offers a blend of comfort, style, and functionality. Designed to accommodate modern living, this property boasts two separate living spaces, making it ideal for both intimate family moments and larger social gatherings. As you step inside, you're greeted by an open and airy floor plan that seamlessly connects the main living areas. The spacious living room features large windows that bathe the room in natural light and provide breathtaking views of the majestic mountains. The adjoining dining area flows effortlessly into a well-appointed kitchen. The master suite is a true sanctuary, offering a peaceful retreat with its generous size, walk-in closet, and a luxurious en-suite bathroom a large walk in shower and dual vanities. Three additional bedrooms provide plenty of space for family members or guests, each thoughtfully designed with comfort in mind. Additional features of this remarkable home include a laundry room, ample storage throughout, and a two-car garage. The home is situated in a friendly community with easy access to local amenities, schools, and recreational opportunities. With its spacious layout, modern amenities, and picturesque setting, this 4-bedroom, 3-bath home in Ryen Glen is a perfect blend of luxury and practicality, offering a lifestyle of comfort and elegance.



BIG SKY
MLS

DELGER
— REAL ESTATE —
BOZEMAN MONTANA

DelgerRealEstate.com

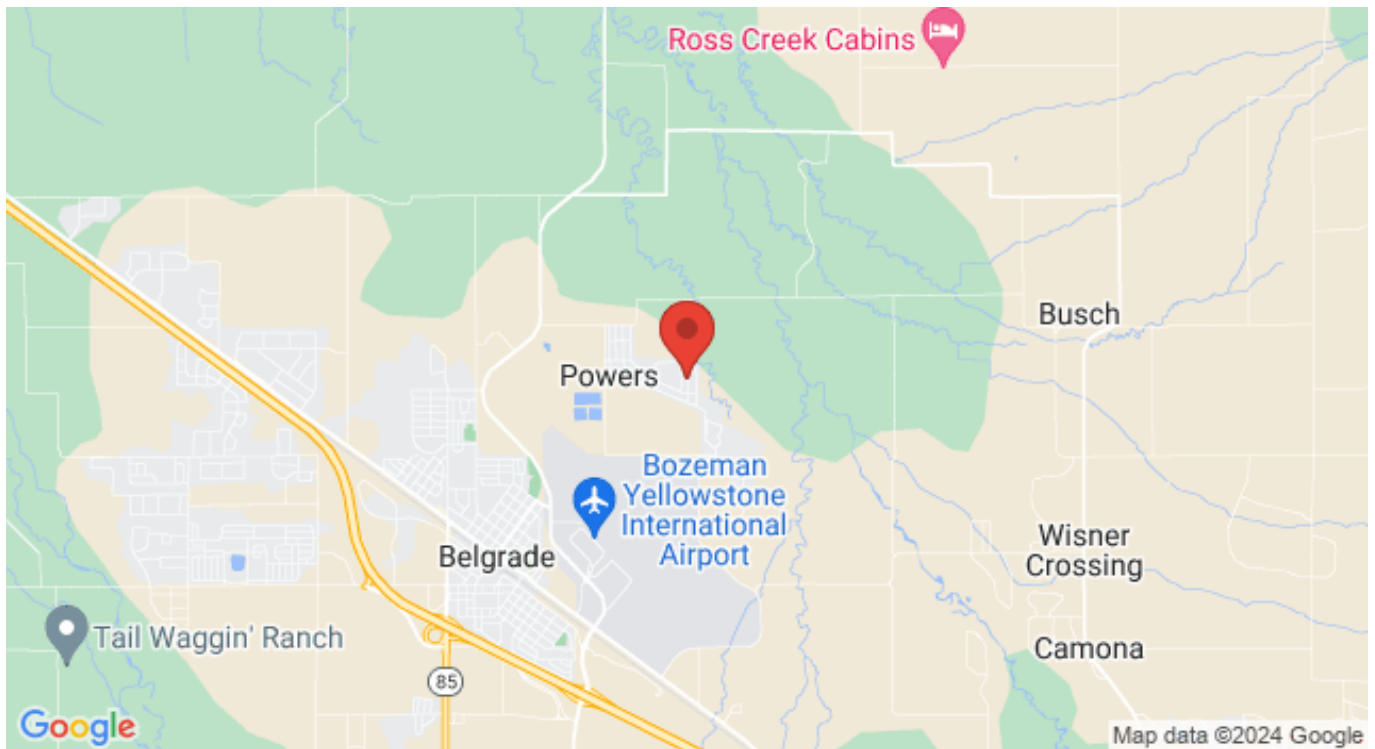
MLS
Information deemed reliable,
but not guaranteed

FEATURES

Status:	Contingent
Type:	Residential
Sub Type:	Single Family
Acres:	± 0.2296
View:	Mountains
Water Features:	None
Listing Date:	2024-06-26
Listing Agent:	Lisa Collins of Berkshire Hathaway - Bozeman

Style:	TriLevel
Year Built:	2019
Beds:	4
Baths:	3
Appliances:	Dryer, Dishwasher, Disposal, Microwave, Refrigerator, Washer
Heating/Cooling:	ForcedAir NaturalGas CeilingFans

LOCATION

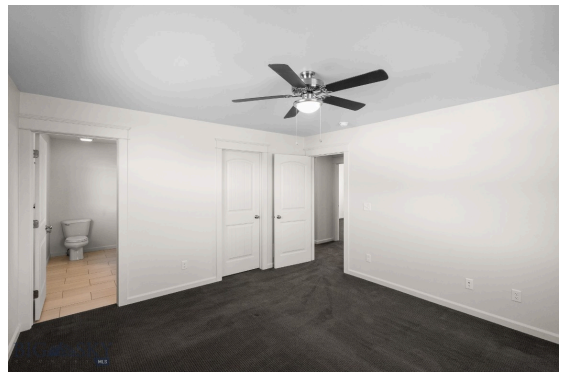


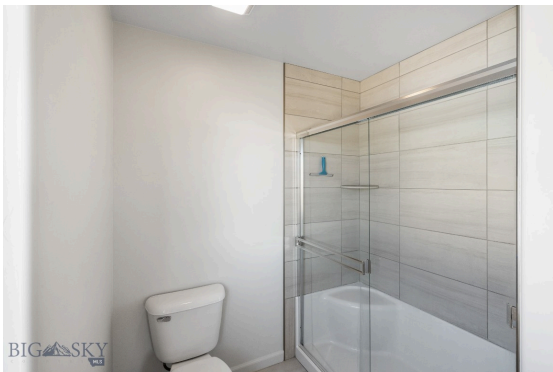
Address: 1719 Dillon Avenue, Belgrade MT 59714

PHOTOS



















BELGRADE LIFESTYLE



With a population of about 8,000 people, Belgrade has the amenities and services buyers expect for a town of this size. The Belgrade School District includes Elementary Schools, a Middle School, and a High School. Belgrade neighborhoods and surrounding areas are experiencing significant population growth, with numerous new subdivisions under development. Belgrade, Montana is located just 11 miles to the northwest of Bozeman, Montana making it a desirable location. Many Belgrade Homes for sale have views of the mountain ranges and open land surrounding the Gallatin Valley.

Homes in Belgrade offer convenient access to the Bozeman Yellowstone International Airport, and to the Interstate. Belgrade has a small downtown area with grocery stores, restaurants, and shopping. Belgrade is just over 10 minutes from Bozeman's N 19th Ave shopping district which includes stores like Costco, Target, etc.

When it comes to outdoor recreation Belgrade is surrounded by 6 different mountain ranges, which offer vast winter and summer recreational opportunities. Bridger Bowl, a home-grown, nonprofit community ski area operating since 1955 is located 24 miles from Belgrade. Big Sky Resort is 44 miles away and is also frequently recognized as one of the world's best ski resorts, most affordable ski resort, and best ski resort for families.

The world's most famous Blue Ribbon fly fishing rivers (Yellowstone, Madison, Gallatin, Jefferson, Beaverhead, and Missouri rivers) are all nearby making this area a world class destination for fly fishing. Yellowstone National Park(2.2 million acres) is located 90 miles south of Belgrade, Montana.

The median price of a single family home in Belgrade is 30% lower priced than single family homes in Bozeman and appeals to buyers seeking lower priced real estate, yet still want to be close to the amenities of Bozeman.

GALLATIN COUNTY

Located in a sweeping valley in the heart of the Rocky Mountains, Gallatin County is the most populated and fastest growing county in scenic southwest Montana. Gallatin Valley has a rich history. Native Americans referred to this area as the "Valley of Flowers". The name seems appropriate because of the great variety of wild flowers found on the mountainsides as well as in the valley. Gallatin Valley derives its name from the Gallatin River, one of the forks of the Missouri river that rises in Yellowstone Park. The Gallatin river, Jefferson river, and Madison river all merge at the town of Three Forks to form the Missouri River. Lewis and Clark named the rivers on their famous expedition to this part of the world in 1805.



There are approximately 1,682,048 acres (2,500 square miles) in Gallatin County including over 16,500 acres in surface water. Approximately 800,000 acres in Gallatin County are owned by the public and managed by several local and national agencies including the Bureau of Land Management, U.S. Forest Service, National Park Service, Montana Fish Wildlife & Parks, Montana Department of Transportation, Department of Natural Resources & Conservation and various local governments. The U.S. Forest Service is the largest land holder in Gallatin

County, currently managing over 665,000 acres. In addition to the Forest Service, various state departments manage approximately 61,000 acres. The Bureau of Land Management holds just over 9,000 acres and an additional 1,600 acres belongs to local governments. On the southern edge of Gallatin County is Yellowstone National Park. Yellowstone National Park is one of the world's primary wildlife preserves and has the greatest concentration of geysers and hot springs in America. Yellowstone National Park is 2,219,789 acres in size (Larger than Rhode Island and Delaware combined). Over 97,600 acres of Yellowstone National Park is located within Gallatin County.

BELGRADE REAL ESTATE EXPERT

Delger Real Estate sold over \$155 Million in Real Estate in 2016-2023. Recognized experts in Internet Marketing and Technology, Delger Real Estate are able to generate maximum exposure for their real estate listings. The result: according to ListHub, Delger Real Estate listings outperform 98% of the market. We encourage you to contact Craig to learn more about real estate in Belgrade and the surrounding areas.

POWERED BY INTELLIGENT MARKETING, PROPRIETARY TECHNOLOGY, AND LOCAL EXPERTISE



Craig Delger
BROKER / OWNER
406.581.7504
craigdelger@gmail.com

v1.01-2024-07-03