

# DELGER

— REAL ESTATE —

BOZEMAN MONTANA



Craig Delger  
BROKER / OWNER  
406.581.7504

**THIS BROCHURE PROVIDED BY CRAIG DELGER - BOZEMAN REAL ESTATE EXPERT**

*Powered by Data, Technology, and Local Expertise*



## 4830 Flanders Way, Bozeman MT 59718

\$565,000

Acres: ±

MLS#: 394179

# INTRODUCTION

Located in the heart of Bozeman at 4830 Flanders Way Unit C near the Gallatin High School and the new Northwest Crossing shopping center, this exquisite modern condo offers an unparalleled living experience. Boasting three spacious bedrooms, two and a half bathrooms, and a convenient two-car garage, this home is the epitome of contemporary luxury. As you step inside, you are greeted by an open and airy floor plan that seamlessly combines style and functionality. The living area features high ceilings, large windows that flood the space with natural light, and sleek durable laminate flooring throughout. Whether you are relaxing with your loved ones or entertaining guests, this versatile space is perfect for any occasion. The gourmet kitchen is a chef's dream, stainless steel appliances, solid surface countertops, and ample cabinet space. From morning coffee to gourmet dinners, this kitchen is sure to inspire your inner culinary artist. The adjacent dining area is ideal for enjoying meals with family and friends, with plenty of room for a dining table. Retreat to the luxurious primary suite, complete with a walk-in closet and a spa-like ensuite bathroom. The two additional bedrooms are perfect for children, guests, or a home office, providing flexibility to suit your lifestyle. The modern design and high-end finishes continue in the bathrooms, with elegant vanities, designer fixtures, and tasteful tile work. Step outside to the covered patio, where you can unwind and soak in the stunning views of the surrounding Bridger mountains. Perfect for alfresco dining or hosting summer BBQs, this outdoor space is an oasis of calm in the bustling city. Conveniently located in Bozeman, this condo offers easy access to shopping, dining, entertainment, school at MSU and outdoor recreation. Whether you enjoy hiking, skiing, or simply exploring the vibrant city streets, this location has something for everyone. Don't miss this opportunity to own a modern masterpiece in the fast growing Northwest Bozeman . Schedule a showing today and experience the luxury and sophistication of 4830 Flanders Way Unit C for yourself.



## FEATURES

<b>Status:</b>	Active
<b>Type:</b>	Residential
<b>Sub Type:</b>	Condominium
<b>View:</b>	Mountains, Valley
<b>Water Features:</b>	None
<b>Listing Date:</b>	2024-07-18
<b>Listing Agent:</b>	Sarah & Abram Antonucci of NextHome Destination

<b>Year Built:</b>	2018
<b>Beds:</b>	3
<b>Baths:</b>	3
<b>Appliances:</b>	Dishwasher, Disposal, Microwave, Range, Refrigerator
<b>Heating/Cooling:</b>	ForcedAir NaturalGas CentralAir, CeilingFans

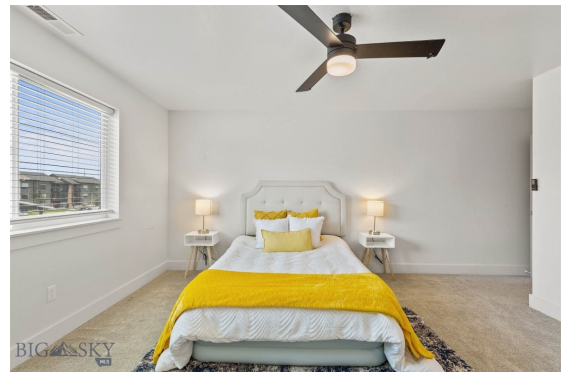
## LOCATION

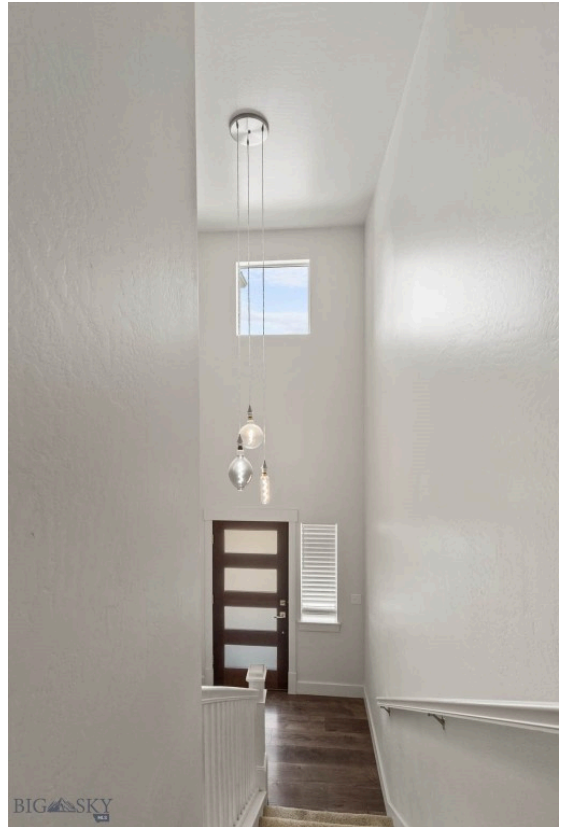


Address: 4830 Flanders Way, Bozeman MT 59718

# PHOTOS

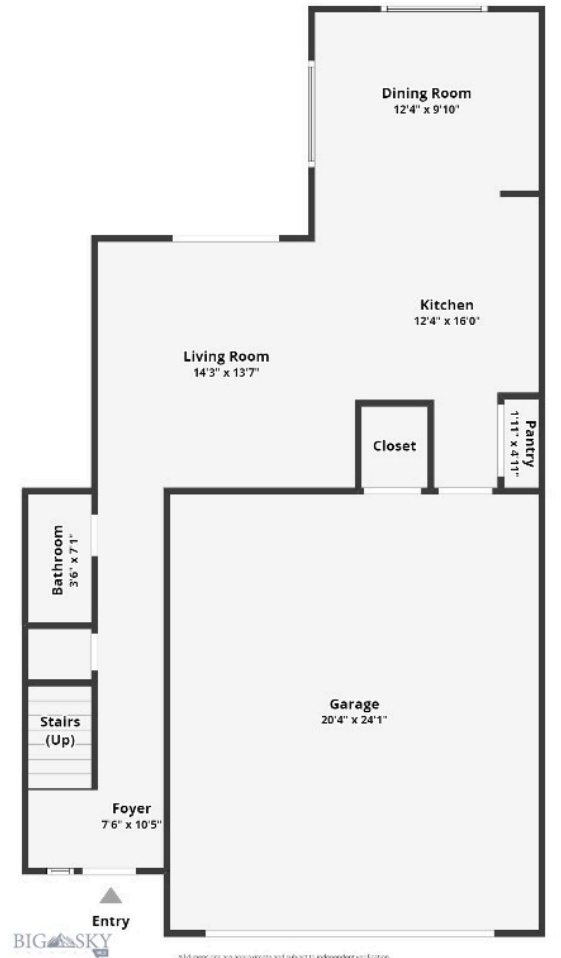


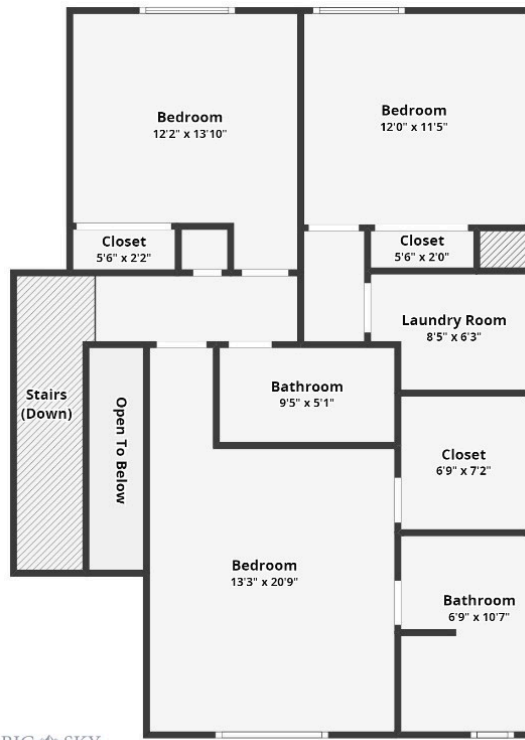












BIG SKY

All dimensions are approximate and subject to independent verification.

# BOZEMAN LIFESTYLE™



Bozeman lifestyle is considered one of the most appealing in the West. Bozeman is routinely ranked as one of the best places to live, best places to retire, best place to raise a kid, best place to visit, best ski town, and best college town. Big Sky Resort is also frequently recognized as one of the world's best ski resorts, most affordable ski resort, and best ski resort for families.

Bozeman is known for its friendly people, sense of community, excellent schools and quality of life. The town has a western charm and a relaxed attitude. The Bozeman Quality Of Life index rates very well due to access to Outdoor Recreation, Amusement, Culture, Education, Medical, Religion, Restaurants and Weather. Bozeman has the cultural amenities of a local symphony and ballet, an energetic downtown restaurant and art scene, and the vibrancy of a college community. Located 16 miles north of Bozeman in the Bridger Canyon area is Bridger Bowl, a home-grown, nonprofit community ski area operating since 1955. Big Sky Resort is less than an hour away and is also frequently recognized as one of the world's best ski resorts, most affordable ski resort, and best ski resort for families.

When it comes to outdoor recreation Bozeman is surrounded by 6 different mountain ranges, which offer vast winter and summer recreational opportunities.

A world class destination for fly fishing, Bozeman is home to the world's most famous Blue Ribbon fly fishing rivers, spring creeks and lakes on Earth. The Yellowstone, Madison, Gallatin, Jefferson, Beaverhead, and Missouri rivers are all nearby.

Bozeman has 60 miles of "Main Street To Mountains" trail system in town, surrounded by 6.9 million acres of public land.

# GALLATIN COUNTY

Located in a sweeping valley in the heart of the Rocky Mountains, Gallatin County is the most populated and fastest growing county in scenic southwest Montana. Gallatin Valley has a rich history. Native americans referred to this area as the “Valley of Flowers”. The name seems appropriate because of the great variety of wild flowers found on the mountainsides as well as in the valley. Gallatin Valley derives its name from the Gallatin River, one of the forks of the Missouri river that rises in Yellowstone Park. The Gallatin river, Jefferson river, and Madison river all merge at the town of Three Forks to form the Missouri River. Lewis and Clark named the rivers on their famous expedition to this part of the world in 1805.



There are approximately 1,682,048 acres(2,500 square miles) in Gallatin County including over 16,500 acres in surface water. Approximately 800,000 acres in Gallatin County are owned by the public and managed by several local and national agencies including the Bureau of Land Management, U.S. Forest Service, National Park Service, Montana Fish Wildlife & Parks, Montana Department of Transportation, Department of Natural Resources & Conservation and various local governments. The U.S. Forest Service is the largest land holder in Gallatin

County, currently managing over 665,000 acres. In addition to the Forest Service, various state departments manage approximately 61,000 acres. The Bureau of Land Management holds just over 9,000 acres and an additional 1,600 acres belongs to local governments. On the southern edge of Gallatin County is Yellowstone National Park. Yellowstone National Park is one of the world’s primary wildlife preserves and has the greatest concentration of geysers and hot springs in America. Yellowstone National Park is 2,219,789 acres in size(Larger than Rhode Island and Delaware combined). Over 97,600 acres of Yellowstone National Park is located within Gallatin County.

# BOZEMAN REAL ESTATE EXPERT

Delger Real Estate sold over \$155 Million in Real Estate in 2016-2023. Recognized experts in Internet Marketing and Technology, Delger Real Estate are able to generate maximum exposure for their real estate listings. The result: according to ListHub, Delger Real Estate listings outperform 98% of the market. We encourage you to contact Craig to learn more about real estate in Bozeman and the surrounding areas.

*POWERED BY INTELLIGENT MARKETING, PROPRIETARY TECHNOLOGY, AND LOCAL EXPERTISE*



**Craig Delger**  
BROKER / OWNER  
406.581.7504  
craigdelger@gmail.com

v1.01-2024-08-31