

DELGER

— REAL ESTATE —

BOZEMAN MONTANA



Craig Delger
BROKER / OWNER
406.581.7504

THIS BROCHURE PROVIDED BY CRAIG DELGER - LIVINGSTON REAL ESTATE EXPERT

Powered by Data, Technology, and Local Expertise



TBD N L Street, Livingston MT 59047

\$489,000

Acres: ± 0.1126

MLS#: 398331

DELGER
— REAL ESTATE —
BOZEMAN MONTANA

DelgerRealEstate.com

MLS
Information deemed reliable,
but not guaranteed

INTRODUCTION

Welcome to Paradise Crossing! This is an exciting new development that offers brand new to-be-built single family residential homes designed with detail and quality in mind. Discover Palisades, a two-story floor plan that offers beautiful contemporary sleek, clean-line finishes. The 3 bedrooms, 2 1/2 bathrooms, efficient kitchen, primary bedroom on the main level, and open floor plan combines modern living with convenience. The thoughtfully designed exterior and interior aesthetics showcase a neutral earth-tone color pallet, creating a serene and inviting atmosphere. Tailor your home to fit your lifestyle with select design options. Enhance your property with additional living space in an Accessory Dwelling Unit (ADU) and/or opt for a garage to meet your storage needs. This builder has a few different floor plan options or will consider a custom build as well. Bring your own design ideas and we will see if we can bring it to life. Great location near the new planned Wellness Center and not far from downtown Livingston. There are only a few available so get on the list today and be one of the first to call this new development home! Also see MLS#398323



FEATURES

Status:	Active	Style:	Contemporary
Type:	Residential	Year Built:	2025
Sub Type:	Single Family	Beds:	3
Acres:	± 0.1126	Baths:	3
Water Features:	None	Appliances:	Dishwasher, Microwave, Range, Refrigerator
Listing Date:	2024-12-03	Heating/Cooling:	Electric NaturalGas None
Listing Agent:	Brooke Weimer of Berkshire Hathaway Livingston		

LOCATION

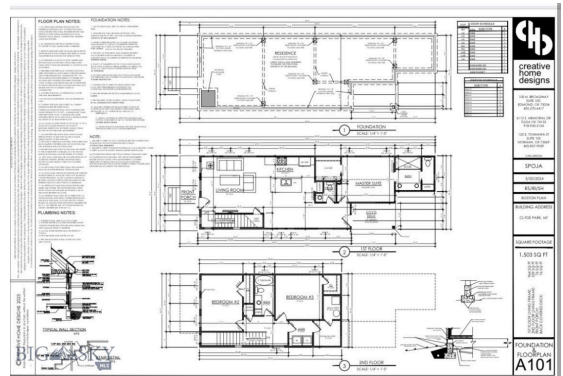


Address: TBD N L Street, Livingston MT 59047

PHOTOS



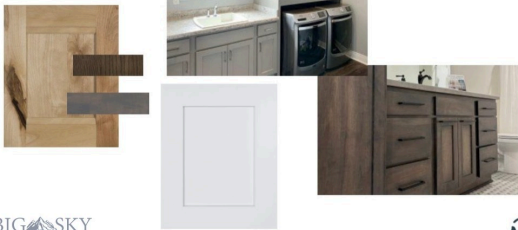




Cabinets

Koch Cabinets

- Express - Windsor
- PG - White | Rustic Birch-Driftwood & Stone



BIG SKY



Countertop

Mada (Easy Stone)

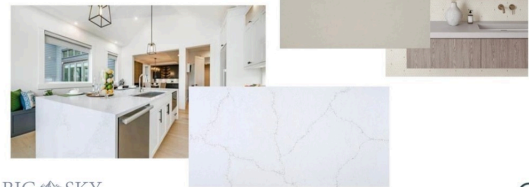
- Enigma

Pental

- Coastal Grey

Bedrosians

- Sequel Limestone



BIG SKY



**Pino Layout
Appliances Option 1 -
Stainless**

All Appliances Are GE

- GNE27JYMFS | 27cu French-Door Refrigerator
- GFE26JYMFS | 25.7cu French-Door Refrigerator
- GRF600AVSS | 30" Free-Standing Electric Convection Range
- GDT650YVFS | Top Control Dishwasher
- JVM3160RFSS | 1.6cu Over The Range Microwave



**Appliances Option
1- Stainless**

All Appliances Are GE

- GNE27JYMFS | 27cu French-Door Refrigerator
- GFE26JYMFS | 25.7cu French-Door Refrigerator
- GRF600AVSS | 30" Free-Standing Electric Convection Range
- GDT650YVFS | Top Control Dishwasher
- JVM3160RFSS | 1.6cu Over The Range Microwave



**Pino Layout
Appliances Option 2 -
Slate**

All Appliances Are GE

- GNE27JIMMES | 27 cu French-Door Refrigerator - Option 1
- GFE26JIMMES | 25.6cu French-Door Refrigerator - Option 2
- GRF600AVES | 30" Free-Standing Electric Convection Range
- GDT650SMVES | Top Control Dishwasher
- JVM3160EFES | 1.6cu Over the Range Microwave



**Appliances
Option 2- Slate**

All Appliances Are GE

- GNE27JIMMES | 27 cu French-Door Refrigerator - Option 1
- GFE26JIMMES | 25.6cu French-Door Refrigerator - Option 2
- GRF600AVES | 30" Free-Standing Electric Convection Range
- GDT650SMVES | Top Control Dishwasher
- JVM3160EFES | 1.6cu Over the Range Microwave



**Laminate –
Living Areas**

Stanton

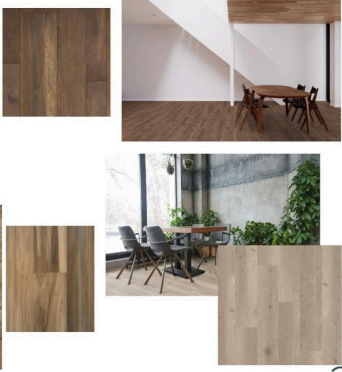
- Nuxo Lux | Hickory Lake | Teak

PacMat

- Calypso | Thunder

TAS

- Equinox Multi | Rivera



Backsplash

Bedrosians

- Cloe Tile 2.5x8 | White, Grey, Black, Green, Blue, Crème



**Carpet -
Bedrooms**

Shaw

- Highland Twill
- New Attitude

ALL COLORS

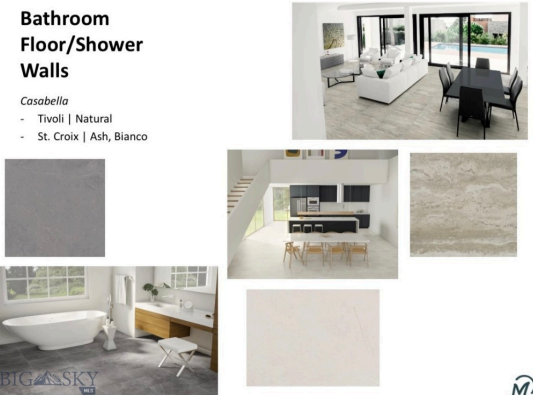
Room scenes on next two slides



**Bathroom
Floor/Shower
Walls**

Casabella

- Tivoli | Natural
- St. Croix | Ash, Bianco





LIVINGSTON LIFESTYLE



Livingston, Montana is a historic train town from the late 1880's that has attracted cowboys, ranchers, artists, and the rich and famous who are enamored by the scenery of this area of southwestern Montana. Livingston has been featured in movies like A River Runs Through It, The Horse Whisperer, and numerous TV series and commercials.

Historic Downtown Livingston has lively restaurants and shops, some of which have been around since the late 1800' s. Livingston is known for fly fishing, cross-country skiing, horseback riding, river rafting and numerous museums, art galleries and restaurants.

When it comes to outdoor recreation the town of Livingston is surrounded by four beautiful mountain ranges, and offers the Yellowstone River, Shields River, and numerous stream and spring creeks for an abundance of outdoor activities. Bridger Bowl, a home-grown, nonprofit community ski area operating since 1955 is located 29 miles from Livingston. Big Sky Resort is 68 miles away and is also frequently recognized as one of the world's best ski resorts, most affordable ski resort, and best ski resort for families. Yellowstone National Park(2.2 million acres) is located 50 miles south of Livingston.

With a population of about 7,000 people, Livingston has the amenities and services buyers expect for a town of this size. Livingston is less than 20 minutes from Bozeman. The Livingston School District includes Elementary Schools, a Middle School, and a High School. The median price of a single family home in Livingston is 18% lower priced than single family homes in Bozeman and appeals to buyers seeking a smaller town, yet still want to be close to the amenities of Bozeman.

PARK COUNTY

Park County, Montana's estimated population is 16,438 with a growth rate of 1.94% in the past year according to the most recent United States census data. Park County, Montana is the 11th largest county in Montana. Park County has a total area of 2,813 square miles (1.8 million acres or 7,290 km²), of which 2,803 square miles (7,260 km²) is land and 10.4 square miles (27 km²) (0.4%) is water. The highest natural point in Montana, Granite Peak at 12,807 feet (3,904m), is located in Park County.



Paradise Valley is a major river valley of the Yellowstone River in southwestern Montana just north of Yellowstone National Park in the southern portion of Park County, Montana. The valley is flanked by the Absaroka Range on the east and the Gallatin Range on the west. The Yellowstone River, one of Montana's Blue Ribbon Trout Rivers, flows through Paradise Valley and is noted for world-class fly fishing in the river and nearby spring creeks such as DePuy Spring Creek. The valley hosts other natural wonders such as several natural hot springs, including Chico Hot Springs near Emigrant, Montana, La Duke Hot Springs near Gardiner, and Hunter's Hot Springs near Livingston. A small part of Yellowstone National Park is located in the extreme southern part of the county.

The northern end of Park County, Montana contains the Shields River Valley. The Shields River is a tributary of the Yellowstone River. It flows west, then south, between the Bridger Range to the west and the Crazy Mountains to the east, past Wilsall and Clyde Park. It joins the Yellowstone approximately 10 mi (16 km) northeast of Livingston, MT.

LIVINGSTON REAL ESTATE EXPERT

Delger Real Estate sold over \$155 Million in Real Estate in 2016-2023. Recognized experts in Internet Marketing and Technology, Delger Real Estate are able to generate maximum exposure for their real estate listings. The result: according to ListHub, Delger Real Estate listings outperform 98% of the market. We encourage you to contact Craig to learn more about real estate in Livingston and the surrounding areas.

POWERED BY INTELLIGENT MARKETING, PROPRIETARY TECHNOLOGY, AND LOCAL EXPERTISE



Craig Delger
BROKER / OWNER
406.581.7504
craigdelger@gmail.com

v1.01-2025-02-05