

# DELGER

— REAL ESTATE —

BOZEMAN MONTANA



Craig Delger  
BROKER / OWNER  
406.581.7504

**THIS BROCHURE PROVIDED BY CRAIG DELGER - LUXURY REAL ESTATE EXPERT**

*Powered by Data, Technology, and Local Expertise*



## 319 S 3rd Avenue, Bozeman MT 59715

\$3,495,000

Acres: ± 0.425

MLS#: 398731

# INTRODUCTION

In the heart of Bozeman's historic district, this stately home stands as a testament to the enduring elegance of Montana's frontier era. Built in 1899, this exquisite dwelling reflects the vibrant spirit of Montana's frontier as it gradually transitioned into the stability of the 20th century, the Free Classic Queen Anne style emerged as a favored architectural expression in Bozeman. This particular home exemplifies the refined evolution of the Queen Anne style, showcasing a blend of dignified elements & stylistic restraint. Upon approaching the residence, one is immediately struck by its commanding presence. The facade is adorned with architectural nuances that speak to its distinguished heritage. A distinctive gambrel dormer adds a touch of whimsy, while a corner polygonal turret, crowned with a striking metal finial, commands attention with its graceful presence. Classical columns, raised on sturdy stone pedestals, further enhance the home's timeless charm, evoking a sense of controlled stateliness that sets it apart from its more ornate predecessors. Spanning (4) city lots, this grand residence offers an expansive living space across four levels, totaling an impressive 5354 sqft. The interior has been meticulously crafted to blend modern comforts with historic charm, offering 5 spacious bedrooms & 3.5 bathrooms. Extensive remodel work carried out between 2001-2003 ensures that the home seamlessly combines period details with contemporary amenities, creating an atmosphere of refined luxury. In addition to its main dwelling, the property features a newer ADU above the garage, providing versatile living options for guests or additional rental income. A new roof installed in 2008 further ensures the longevity of this architectural gem, preserving its grandeur for generations to come. Beyond its tangible features, the historic significance of this property lies in its role as a custodian of Bozeman's past. With its timeless elegance & meticulous craftsmanship, this bespoke home stands as a living testament to the enduring legacy of Montana's frontier heritage. Notably, the lush landscaping surrounding the property creates an oasis of tranquility, offering residents a serene retreat. Moreover, its prime location, mere blocks from downtown Bozeman, ensures easy access to an array of restaurants, boutique shopping venues, vibrant festivals, and live music performances, enriching the lifestyle of its inhabitants with the vibrant culture of the community.





## FEATURES

<b>Status:</b>	Active
<b>Type:</b>	Residential
<b>Sub Type:</b>	Single Family
<b>Acres:</b>	± 0.425
<b>View:</b>	Mountains, TreesWoods
<b>Water Features:</b>	None
<b>Listing Date:</b>	2025-03-26
<b>Listing Agent:</b>	PollyAnna Snyder of Engel & Volkers - Bozeman

<b>Style:</b>	Victorian
<b>Year Built:</b>	1899
<b>Beds:</b>	5
<b>Baths:</b>	4
<b>Appliances:</b>	Dryer, Dishwasher, Disposal, Microwave, Range, Refrigerator, WaterSoftener, Washer
<b>Heating/Cooling:</b>	Baseboard CeilingFans

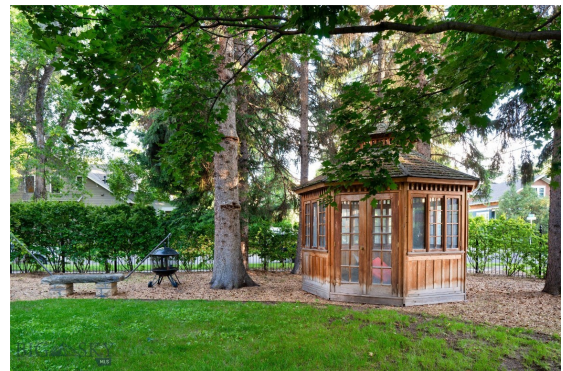
## LOCATION



Address: 319 S 3rd Avenue, Bozeman MT 59715



# PHOTOS















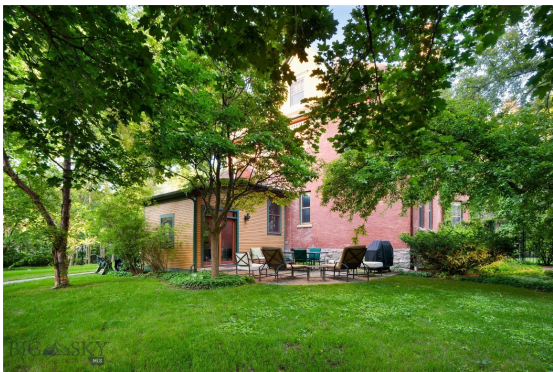














# BOZEMAN LIFESTYLE™



Bozeman lifestyle is considered one of the most appealing in the West. Bozeman is routinely ranked as one of the best places to live, best places to retire, best place to raise a kid, best place to visit, best ski town, and best college town. Big Sky Resort is also frequently recognized as one of the world's best ski resorts, most affordable ski resort, and best ski resort for families.

Bozeman is known for its friendly people, sense of community, excellent schools and quality of life. The town has a western charm and a relaxed attitude. The Bozeman Quality Of Life index rates very well due to access to Outdoor Recreation, Amusement, Culture, Education, Medical, Religion, Restaurants and Weather. Bozeman has the cultural amenities of a local symphony and ballet, an energetic downtown restaurant and art scene, and the vibrancy of a college community. Located 16 miles north of Bozeman in the Bridger Canyon area is Bridger Bowl, a home-grown, nonprofit community ski area operating since 1955. Big Sky Resort is less than an hour away and is also frequently recognized as one of the world's best ski resorts, most affordable ski resort, and best ski resort for families.

When it comes to outdoor recreation Bozeman is surrounded by 6 different mountain ranges, which offer vast winter and summer recreational opportunities.

A world class destination for fly fishing, Bozeman is home to the world's most famous Blue Ribbon fly fishing rivers, spring creeks and lakes on Earth. The Yellowstone, Madison, Gallatin, Jefferson, Beaverhead, and Missouri rivers are all nearby.

Bozeman has 60 miles of "Main Street To Mountains" trail system in town, surrounded by 6.9 million acres of public land.

# GALLATIN COUNTY

Located in a sweeping valley in the heart of the Rocky Mountains, Gallatin County is the most populated and fastest growing county in scenic southwest Montana. Gallatin Valley has a rich history. Native Americans referred to this area as the "Valley of Flowers". The name seems appropriate because of the great variety of wild flowers found on the mountainsides as well as in the valley. Gallatin Valley derives its name from the Gallatin River, one of the forks of the Missouri river that rises in Yellowstone Park. The Gallatin river, Jefferson river, and Madison river all merge at the town of Three Forks to form the Missouri River. Lewis and Clark named the rivers on their famous expedition to this part of the world in 1805.



There are approximately 1,682,048 acres (2,500 square miles) in Gallatin County including over 16,500 acres in surface water. Approximately 800,000 acres in Gallatin County are owned by the public and managed by several local and national agencies including the Bureau of Land Management, U.S. Forest Service, National Park Service, Montana Fish Wildlife & Parks, Montana Department of Transportation, Department of Natural Resources & Conservation and various local governments. The U.S. Forest Service is the largest land holder in Gallatin

County, currently managing over 665,000 acres. In addition to the Forest Service, various state departments manage approximately 61,000 acres. The Bureau of Land Management holds just over 9,000 acres and an additional 1,600 acres belongs to local governments. On the southern edge of Gallatin County is Yellowstone National Park. Yellowstone National Park is one of the world's primary wildlife preserves and has the greatest concentration of geysers and hot springs in America. Yellowstone National Park is 2,219,789 acres in size (Larger than Rhode Island and Delaware combined). Over 97,600 acres of Yellowstone National Park is located within Gallatin County.



# LUXURY REAL ESTATE EXPERT

Delger Real Estate sold over \$155 Million in Real Estate in 2016-2023. Recognized experts in Internet Marketing and Technology, Delger Real Estate are able to generate maximum exposure for their real estate listings. The result: according to ListHub, Delger Real Estate listings outperform 98% of the market. We encourage you to contact Craig to learn more about real estate in Bozeman and the surrounding areas.

*POWERED BY INTELLIGENT MARKETING, PROPRIETARY TECHNOLOGY, AND LOCAL EXPERTISE*



**Craig Delger**  
BROKER / OWNER  
406.581.7504  
craigdelger@gmail.com

v1.01-2025-04-01