

# DELGER

— REAL ESTATE —

BOZEMAN MONTANA



Craig Delger  
BROKER / OWNER  
406.581.7504

**THIS BROCHURE PROVIDED BY CRAIG DELGER - BOZEMAN REAL ESTATE EXPERT**

*Powered by Data, Technology, and Local Expertise*

*Virtually Staged*



## 86 W Granite Peak Drive, Bozeman MT 59718

\$935,000

Acres: ± 0.2

MLS#: 399886

# INTRODUCTION

YOUR DREAM LIFE STARTS HERE! - This better-than-new 4-bedroom, 2.5-bath home in Woodland Park isn't just a house; it's the lifestyle upgrade you've been waiting for. If you're ready to elevate your life, embrace comfort, and own a home that reflects your ambitions, this is it! From the moment you arrive, the gorgeous landscaping and welcoming curb appeal set the tone: this is a home built for those who expect more. Walk through the formal entry, and you'll immediately feel at ease. The warmth of brand-new hardwood floors beneath your feet reminds you you're exactly where you're meant to be.

**A Living Space That Inspires** - Imagine cozying up by the gas fireplace on chilly Montana evenings or hosting unforgettable gatherings in the expansive dining area. The open floor plan, flooded with natural light, makes every moment feel vibrant, energizing, and full of possibility.

**A Kitchen Designed for Greatness** - If the kitchen is the heart of the home, this one beats with pure excellence. A gas range, sleek range hood, oversized single-basin sink, and an expansive island with seating make this space a chef's dream. And that built-in pantry? A game-changer.

Step onto your covered back patio, where every season is an invitation to entertain, unwind, and soak in the perfect balance of sun and shade. Your fully fenced backyard ensures privacy, safety, and a serene space for pets, kids, and quiet moments.

This spacious, main-level primary suite is where comfort meets luxury. A massive walk-in closet (with laundry hookups for convenience) and a spa-like en-suite with dual vanities and a stunning floor-to-ceiling tiled shower - this is your personal oasis.

**Bonus Space? Endless Possibilities!** - The oversized bonus room above the garage is your blank canvas. Home theater? Game room? Personal gym? Office? Whatever your dream space is, it starts here.

With three additional spacious bedrooms (all featuring top-down, bottom-up blackout blinds for the perfect night's sleep), an upstairs laundry room with ample storage, and a guest bath with dual vanities, this home was designed for comfort, convenience, and a life well lived. This isn't just a house; it's the next chapter of your success story.



## FEATURES

<b>Status:</b>	Contingent
<b>Type:</b>	Residential
<b>Sub Type:</b>	Single Family
<b>Acres:</b>	± 0.2
<b>Water Features:</b>	None
<b>Listing Date:</b>	2025-03-04
<b>Listing Agent:</b>	Tamara Williams of Tamara Williams and Company

<b>Style:</b>	Craftsman
<b>Year Built:</b>	2022
<b>Beds:</b>	4
<b>Baths:</b>	3
<b>Appliances:</b>	Dryer, Dishwasher, Disposal, Microwave, Range, Refrigerator, Washer
<b>Heating/Cooling:</b>	ForcedAir NaturalGas CentralAir, CeilingFans

## LOCATION



# PHOTOS



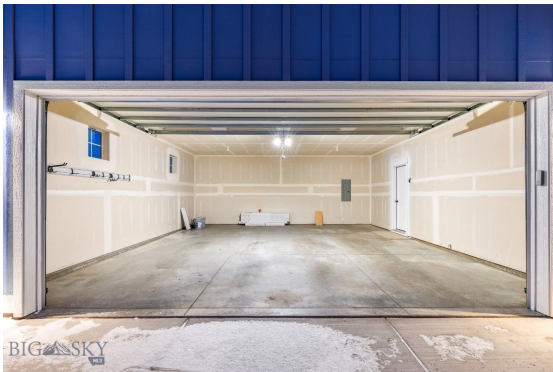


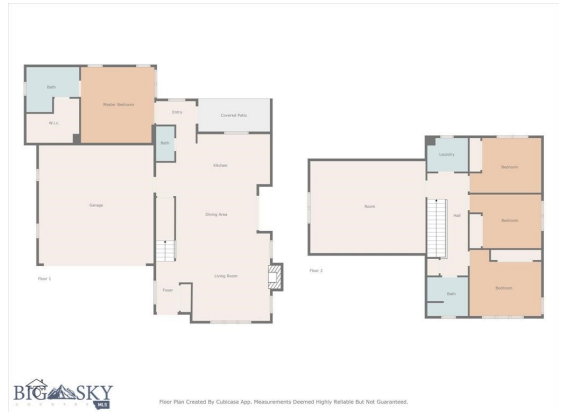












# BOZEMAN LIFESTYLE™



Bozeman lifestyle is considered one of the most appealing in the West. Bozeman is routinely ranked as one of the best places to live, best places to retire, best place to raise a kid, best place to visit, best ski town, and best college town. Big Sky Resort is also frequently recognized as one of the world's best ski resorts, most affordable ski resort, and best ski resort for families.

Bozeman is known for its friendly people, sense of community, excellent schools and quality of life. The town has a western charm and a relaxed attitude. The Bozeman Quality Of Life index rates very well due to access to Outdoor Recreation, Amusement, Culture, Education, Medical, Religion, Restaurants and Weather. Bozeman has the cultural amenities of a local symphony and ballet, an energetic downtown restaurant and art scene, and the vibrancy of a college community. Located 16 miles north of Bozeman in the Bridger Canyon area is Bridger Bowl, a home-grown, nonprofit community ski area operating since 1955. Big Sky Resort is less than an hour away and is also frequently recognized as one of the world's best ski resorts, most affordable ski resort, and best ski resort for families.

When it comes to outdoor recreation Bozeman is surrounded by 6 different mountain ranges, which offer vast winter and summer recreational opportunities.

A world class destination for fly fishing, Bozeman is home to the world's most famous Blue Ribbon fly fishing rivers, spring creeks and lakes on Earth. The Yellowstone, Madison, Gallatin, Jefferson, Beaverhead, and Missouri rivers are all nearby.

Bozeman has 60 miles of "Main Street To Mountains" trail system in town, surrounded by 6.9 million acres of public land.

# GALLATIN COUNTY

Located in a sweeping valley in the heart of the Rocky Mountains, Gallatin County is the most populated and fastest growing county in scenic southwest Montana. Gallatin Valley has a rich history. Native Americans referred to this area as the “Valley of Flowers”. The name seems appropriate because of the great variety of wild flowers found on the mountainsides as well as in the valley. Gallatin Valley derives its name from the Gallatin River, one of the forks of the Missouri river that rises in Yellowstone Park. The Gallatin river, Jefferson river, and Madison river all merge at the town of Three Forks to form the Missouri River. Lewis and Clark named the rivers on their famous expedition to this part of the world in 1805.



There are approximately 1,682,048 acres (2,500 square miles) in Gallatin County including over 16,500 acres in surface water. Approximately 800,000 acres in Gallatin County are owned by the public and managed by several local and national agencies including the Bureau of Land Management, U.S. Forest Service, National Park Service, Montana Fish Wildlife & Parks, Montana Department of Transportation, Department of Natural Resources & Conservation and various local governments. The U.S. Forest Service is the largest land holder in Gallatin

County, currently managing over 665,000 acres. In addition to the Forest Service, various state departments manage approximately 61,000 acres. The Bureau of Land Management holds just over 9,000 acres and an additional 1,600 acres belongs to local governments. On the southern edge of Gallatin County is Yellowstone National Park. Yellowstone National Park is one of the world’s primary wildlife preserves and has the greatest concentration of geysers and hot springs in America. Yellowstone National Park is 2,219,789 acres in size (Larger than Rhode Island and Delaware combined). Over 97,600 acres of Yellowstone National Park is located within Gallatin County.

# BOZEMAN REAL ESTATE EXPERT

Delger Real Estate sold over \$155 Million in Real Estate in 2016-2023. Recognized experts in Internet Marketing and Technology, Delger Real Estate are able to generate maximum exposure for their real estate listings. The result: according to ListHub, Delger Real Estate listings outperform 98% of the market. We encourage you to contact Craig to learn more about real estate in Bozeman and the surrounding areas.

*POWERED BY INTELLIGENT MARKETING, PROPRIETARY TECHNOLOGY, AND LOCAL EXPERTISE*



**Craig Delger**  
BROKER / OWNER  
406.581.7504  
craigdelger@gmail.com

v1.01-2025-04-01