

DELGER

— REAL ESTATE —

BOZEMAN MONTANA



Craig Delger
BROKER / OWNER
406.581.7504

THIS BROCHURE PROVIDED BY CRAIG DELGER - BOZEMAN REAL ESTATE EXPERT

Powered by Data, Technology, and Local Expertise



65 W Clara Court, Bozeman MT 59718

\$765,000

Acres: ± 0.264

MLS#: 400180

DELGER
— REAL ESTATE —
BOZEMAN MONTANA

DelgerRealEstate.com

REALTOR®
MLS
Information deemed reliable,
but not guaranteed

INTRODUCTION

Welcome to this exceptional single-level home, perfectly situated in the highly sought-after Elk Grove neighborhood, just south of Four Corners. Offering easy access to Bozeman, Belgrade, and Big Sky, this residence blends elegance, comfort, and modern design. With three bedrooms and a large office/den, everything you need is thoughtfully arranged on one level for effortless living. The heart of the home is the chef-inspired kitchen, featuring quartz countertops, a high-end gas range, a stylish herringbone tile backsplash, and ample counter space ideal for cooking and entertaining. The open-concept design flows seamlessly into the living room, creating a warm space for gatherings with friends and family. You will love the updated durable luxury vinyl plank flooring. Large picture windows and 8-foot sliding patio doors bring in abundant natural light and showcase picturesque views of the surrounding landscape. The dining room transitions to the covered patio, making it perfect for alfresco dining or summer barbecues beneath the Montana sky. For those who love outdoor living, the extended concrete patio, accented with stacked stone, offers endless possibilities for your dream outdoor kitchen. Step into the tranquil primary suite, complete with an en suite bathroom featuring a dual vanity, a beautifully tiled shower, a luxurious soaking tub, and a spacious walk-in closet. Sliding doors open to the covered patio, where you'll find a 2-person hot tub the perfect spot to relax. Adjacent to the primary suite is a large, dedicated office/flex room. Down the hall, you'll find a dedicated laundry room with a mud sink, located next to the two additional bedrooms and full bath. Outside, enjoy gardening with the raised garden beds and extend the season with the new greenhouse. Nestled on a beautifully landscaped 0.26-acre lot, this home features a full sprinkler system and ample space for gardening, relaxation, and play. Elk Grove offers an unparalleled outdoor lifestyle with green spaces and recreational amenities, including playgrounds and miles of walking trails. Enjoy morning strolls with mountain views or relax surrounded by mature trees and landscaping. The community also features a pond with separate beaches for dogs and humans, basketball and volleyball courts, and a baseball field, creating an ideal environment for active families and nature enthusiasts alike. Don't miss the chance to make this dream home yours today!



FEATURES

Status:	Active	Style:	Ranch
Type:	Residential	Year Built:	2002
Sub Type:	Single Family	Beds:	3
Acres:	± 0.264	Baths:	3
Listing Date:	2025-03-25	Appliances:	Dryer, Dishwasher, Microwave, Range, Refrigerator, Washer
Listing Agent:	Jody Savage of Savage Real Estate Group	Heating/Cooling:	ForcedAir None

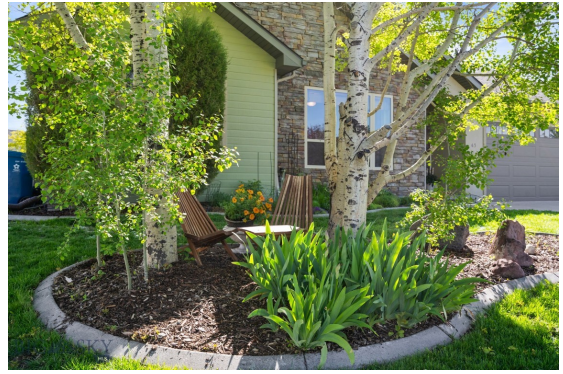
LOCATION

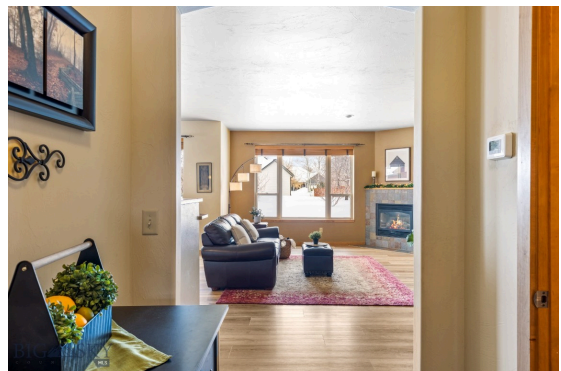


Address: 65 W Clara Court, Bozeman MT 59718

PHOTOS



















BOZEMAN LIFESTYLE™



Bozeman lifestyle is considered one of the most appealing in the West. Bozeman is routinely ranked as one of the best places to live, best places to retire, best place to raise a kid, best place to visit, best ski town, and best college town. Big Sky Resort is also frequently recognized as one of the world's best ski resorts, most affordable ski resort, and best ski resort for families.

Bozeman is known for its friendly people, sense of community, excellent schools and quality of life. The town has a western charm and a relaxed attitude. The Bozeman Quality Of Life index rates very well due to access to Outdoor Recreation, Amusement, Culture, Education, Medical, Religion, Restaurants and Weather. Bozeman has the cultural amenities of a local symphony and ballet, an energetic downtown restaurant and art scene, and the vibrancy of a college community. Located 16 miles north of Bozeman in the Bridger Canyon area is Bridger Bowl, a home-grown, nonprofit community ski area operating since 1955. Big Sky Resort is less than an hour away and is also frequently recognized as one of the world's best ski resorts, most affordable ski resort, and best ski resort for families.

When it comes to outdoor recreation Bozeman is surrounded by 6 different mountain ranges, which offer vast winter and summer recreational opportunities.

A world class destination for fly fishing, Bozeman is home to the world's most famous Blue Ribbon fly fishing rivers, spring creeks and lakes on Earth. The Yellowstone, Madison, Gallatin, Jefferson, Beaverhead, and Missouri rivers are all nearby.

Bozeman has 60 miles of "Main Street To Mountains" trail system in town, surrounded by 6.9 million acres of public land.

GALLATIN COUNTY

Located in a sweeping valley in the heart of the Rocky Mountains, Gallatin County is the most populated and fastest growing county in scenic southwest Montana. Gallatin Valley has a rich history. Native americans referred to this area as the “Valley of Flowers”. The name seems appropriate because of the great variety of wild flowers found on the mountainsides as well as in the valley. Gallatin Valley derives its name from the Gallatin River, one of the forks of the Missouri river that rises in Yellowstone Park. The Gallatin river, Jefferson river, and Madison river all merge at the town of Three Forks to form the Missouri River. Lewis and Clark named the rivers on their famous expedition to this part of the world in 1805.



There are approximately 1,682,048 acres(2,500 square miles) in Gallatin County including over 16,500 acres in surface water. Approximately 800,000 acres in Gallatin County are owned by the public and managed by several local and national agencies including the Bureau of Land Management, U.S. Forest Service, National Park Service, Montana Fish Wildlife & Parks, Montana Department of Transportation, Department of Natural Resources & Conservation and various local governments. The U.S. Forest Service is the largest land holder in Gallatin

County, currently managing over 665,000 acres. In addition to the Forest Service, various state departments manage approximately 61,000 acres. The Bureau of Land Management holds just over 9,000 acres and an additional 1,600 acres belongs to local governments. On the southern edge of Gallatin County is Yellowstone National Park. Yellowstone National Park is one of the world’s primary wildlife preserves and has the greatest concentration of geysers and hot springs in America. Yellowstone National Park is 2,219,789 acres in size(Larger than Rhode Island and Delaware combined). Over 97,600 acres of Yellowstone National Park is located within Gallatin County.

BOZEMAN REAL ESTATE EXPERT

Delger Real Estate sold over \$155 Million in Real Estate in 2016-2023. Recognized experts in Internet Marketing and Technology, Delger Real Estate are able to generate maximum exposure for their real estate listings. The result: according to ListHub, Delger Real Estate listings outperform 98% of the market. We encourage you to contact Craig to learn more about real estate in Bozeman and the surrounding areas.

POWERED BY INTELLIGENT MARKETING, PROPRIETARY TECHNOLOGY, AND LOCAL EXPERTISE



Craig Delger
BROKER / OWNER
406.581.7504
craigdelger@gmail.com

v1.01-2025-04-01