

# DELGER

— REAL ESTATE —

BOZEMAN MONTANA



Craig Delger  
BROKER / OWNER  
406.581.7504

**THIS BROCHURE PROVIDED BY CRAIG DELGER - LUXURY REAL ESTATE EXPERT**

*Powered by Data, Technology, and Local Expertise*



## 507 S 8th Avenue, Bozeman MT 59715

\$2,250,000  
Acres: ± 0.2496  
MLS#: 400373

DELGER  
— REAL ESTATE —  
BOZEMAN MONTANA

DelgerRealEstate.com

MLS REAL ESTATE SERVICE  
**MLS**   
Information deemed reliable,  
but not guaranteed

# INTRODUCTION

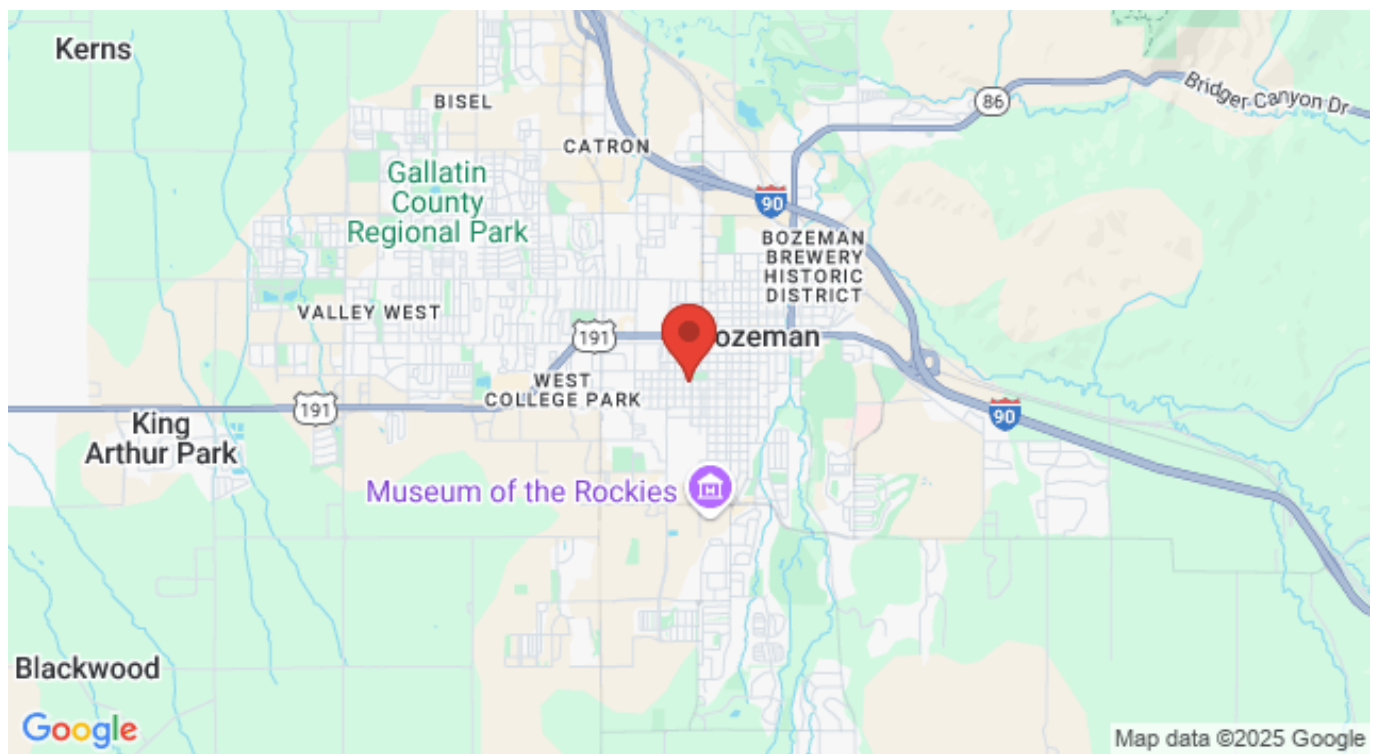
Embrace the timeless elegance of historic charm and modern comfort in this exceptional home, ideally located in the heart of Bozeman's prestigious Cooper Park Historic District. Upon entering, you are greeted by generously sized rooms, each thoughtfully crafted with high ceilings that create an airy and light-filled atmosphere. The home's classic historic appeal is beautifully complemented by modern conveniences, offering a seamless blend of old-world charm and contemporary comfort. Designed with both family and guests in mind, the main level features an expansive living room, a cozy second sitting room, a gracious dining room, and a kitchen that boasts an inviting eat-in area and a walk-in pantry. A true highlight of this floor is the sunroom, a serene retreat that bathes the kitchen and sunroom in natural light. Also on this level is a private main-floor bedroom with an ensuite full bathroom, plus a convenient half bathroom for guests. The second floor is equally impressive, with a spacious central hall that connects four generously sized bedrooms. High ceilings continue throughout this level, contributing to the home's sense of openness and grandeur. Recognized with a Historic Preservation Award in 2004, this remarkable property sits on a generous 10,873-square-foot lot, offering an oasis of comfort and privacy. The yard has mature fruit trees, chicken coop and plenty of room for home garden if desired. A detached two-car garage with additional storage and a large unfinished area above provides significant potential. This space is ideal for conversion into an accessory dwelling unit (ADU) or can be tailored to suit any number of uses, offering boundless possibilities. Whether hosting in the expansive living areas or relaxing in your private outdoor sanctuary, this home is designed for both entertaining and tranquil living. The Cooper Park Historic District is renowned for its scenic beauty and proximity to Bozeman's vibrant downtown, offering the perfect mix of historic charm and urban convenience. The home is being offered completed furnished with just a few exclusions. Don't miss your chance to own a piece of Bozeman's rich history, schedule your tour today!



## FEATURES

<b>Status:</b>	Active	<b>Year Built:</b>	1900
<b>Type:</b>	Residential	<b>Beds:</b>	5
<b>Sub Type:</b>	Single Family	<b>Baths:</b>	4
<b>Acres:</b>	± 0.2496	<b>Appliances:</b>	Dryer, Dishwasher, Freezer, Disposal, Microwave, Range, Refrigerator, Washer
<b>Listing Date:</b>	2025-03-21	<b>Heating/Cooling:</b>	WallFurnace WallWindowUnits
<b>Listing Agent:</b>	Liz Nitz of Range Properties		

## LOCATION



Address: 507 S 8th Avenue, Bozeman MT 59715

# PHOTOS







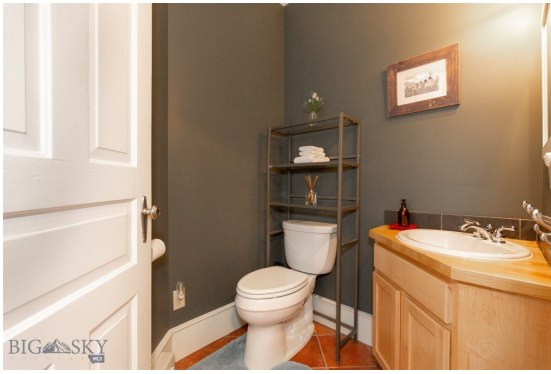














# BOZEMAN LIFESTYLE™



Bozeman lifestyle is considered one of the most appealing in the West. Bozeman is routinely ranked as one of the best places to live, best places to retire, best place to raise a kid, best place to visit, best ski town, and best college town. Big Sky Resort is also frequently recognized as one of the world's best ski resorts, most affordable ski resort, and best ski resort for families.

Bozeman is known for its friendly people, sense of community, excellent schools and quality of life. The town has a western charm and a relaxed attitude. The Bozeman Quality Of Life index rates very well due to access to Outdoor Recreation, Amusement, Culture, Education, Medical, Religion, Restaurants and Weather. Bozeman has the cultural amenities of a local symphony and ballet, an energetic downtown restaurant and art scene, and the vibrancy of a college community. Located 16 miles north of Bozeman in the Bridger Canyon area is Bridger Bowl, a home-grown, nonprofit community ski area operating since 1955. Big Sky Resort is less than an hour away and is also frequently recognized as one of the world's best ski resorts, most affordable ski resort, and best ski resort for families.

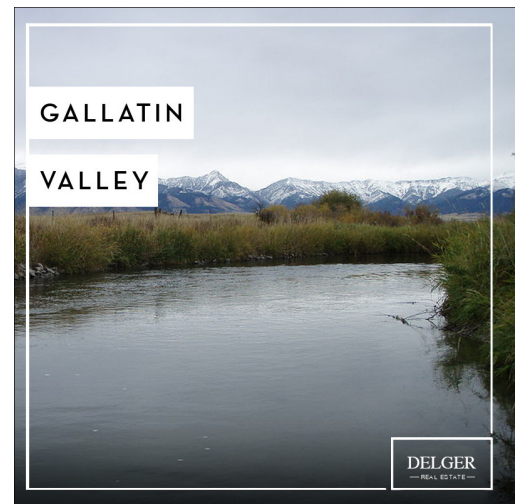
When it comes to outdoor recreation Bozeman is surrounded by 6 different mountain ranges, which offer vast winter and summer recreational opportunities.

A world class destination for fly fishing, Bozeman is home to the world's most famous Blue Ribbon fly fishing rivers, spring creeks and lakes on Earth. The Yellowstone, Madison, Gallatin, Jefferson, Beaverhead, and Missouri rivers are all nearby.

Bozeman has 60 miles of "Main Street To Mountains" trail system in town, surrounded by 6.9 million acres of public land.

# GALLATIN COUNTY

Located in a sweeping valley in the heart of the Rocky Mountains, Gallatin County is the most populated and fastest growing county in scenic southwest Montana. Gallatin Valley has a rich history. Native americans referred to this area as the “Valley of Flowers”. The name seems appropriate because of the great variety of wild flowers found on the mountainsides as well as in the valley. Gallatin Valley derives its name from the Gallatin River, one of the forks of the Missouri river that rises in Yellowstone Park. The Gallatin river, Jefferson river, and Madison river all merge at the town of Three Forks to form the Missouri River. Lewis and Clark named the rivers on their famous expedition to this part of the world in 1805.



There are approximately 1,682,048 acres(2,500 square miles) in Gallatin County including over 16,500 acres in surface water. Approximately 800,000 acres in Gallatin County are owned by the public and managed by several local and national agencies including the Bureau of Land Management, U.S. Forest Service, National Park Service, Montana Fish Wildlife & Parks, Montana Department of Transportation, Department of Natural Resources & Conservation and various local governments. The U.S. Forest Service is the largest land holder in Gallatin

County, currently managing over 665,000 acres. In addition to the Forest Service, various state departments manage approximately 61,000 acres. The Bureau of Land Management holds just over 9,000 acres and an additional 1,600 acres belongs to local governments. On the southern edge of Gallatin County is Yellowstone National Park. Yellowstone National Park is one of the world’s primary wildlife preserves and has the greatest concentration of geysers and hot springs in America. Yellowstone National Park is 2,219,789 acres in size(Larger than Rhode Island and Delaware combined). Over 97,600 acres of Yellowstone National Park is located within Gallatin County.

# LUXURY REAL ESTATE EXPERT

Delger Real Estate sold over \$155 Million in Real Estate in 2016-2023. Recognized experts in Internet Marketing and Technology, Delger Real Estate are able to generate maximum exposure for their real estate listings. The result: according to ListHub, Delger Real Estate listings outperform 98% of the market. We encourage you to contact Craig to learn more about real estate in Bozeman and the surrounding areas.

*POWERED BY INTELLIGENT MARKETING, PROPRIETARY TECHNOLOGY, AND LOCAL EXPERTISE*



**Craig Delger**  
BROKER / OWNER  
406.581.7504  
craigdelger@gmail.com

v1.01-2025-03-31