

**THIS BROCHURE PROVIDED BY CRAIG DELGER - LUXURY REAL ESTATE EXPERT**

*Powered by Data, Technology, and Local Expertise*



**354 Brass Lantern Court, Bozeman MT 59715**

\$16,525,000  
Acres: ± 36.375  
MLS#: 402064

# INTRODUCTION

This exceptional 36.375-acre estate blends modern luxury with Montanas breathtaking landscape, just over 4 miles from downtown Bozeman. The newly remodeled 9,787 sq. ft. residence, originally built in 1989 and transformed in 2022 by NVS Architects and Villa Homes, features seven bedrooms, four and a half bathrooms, and sophisticated, thoughtful design throughout. Expansive living spaces include a state-of-the-art kitchen, theater room, gym, bonus room, dedicated dog room with outdoor access and a stunning outdoor area with a covered patio, outdoor kitchen, firepit, and astroturf dog run. The main level is anchored by a vaulted great room with expansive windows framing mountain views, a gas fireplace, and a Restoration Hardware chandelier. The kitchen is a showpiece, outfitted with high-end BlueStar appliances, a large island, and a hidden prep kitchen with Miele and True appliances perfect for seamless entertaining. The stunning main level primary suite includes spa bath, dual walk-in closets and a private office with covered patio. The lower level offers four bedrooms, two bathrooms, a large family room with a gas fireplace, and walk-out access to a private patio and playground, creating an ideal space for guests or multigenerational living. The upper level of the home features a large media room with wet bar, two bedrooms, bath and bonus room. Designed for year-round enjoyment, the outdoor areas seamlessly combine beauty and function. A warm mahogany deck provides a front-row seat to the mountains, while radiant heat in the surrounding tile ensures snow-free patios and walkways in winter. A 1.25-acre pond, greenhouse, heated driveways, a whole-home generator, and three gated entries with paved driveways enhance comfort and security. The 10,400 sq. ft. shop and showroom fully redesigned in 2022 is a dream space for collectors, hobbyists, or business use. The shop features five car lifts, two gas heaters, and a dedicated workroom with a powder bath. The adjoining showroom offers an epoxy-finished floor, three stylish offices, a kitchenette, and an additional powder bath ideal for professional operations, meetings, or displaying prized collections. With direct access to National Forest and the M Trailhead, this rare property offers the ultimate Montana lifestyle private, convenient, and built for both adventure and elegance.





# FEATURES

Status:	Active	Style:	Custom
Type:	Residential	Year Built:	1989
Sub Type:	SingleFamilyResidence	Beds:	7
Acres:	± 36.375	Baths:	5
View:	Lake, Mountains, Pond, SouthernExposure, Valley	Appliances:	BuiltInOven, Dryer, Dishwasher, Disposal, Microwave, Range, Refrigerator, WaterSoftener, WineCooler, Washer
Water Features:	Pond	Heating/Cooling:	ForcedAir NaturalGas RadiantFloor CentralAir
Listing Date:	2025-06-06		
Listing Agent:	Trent Lister of PureWest Real Estate Bozeman		

# LOCATION



Address: 354 Brass Lantern Court, Bozeman MT 59715



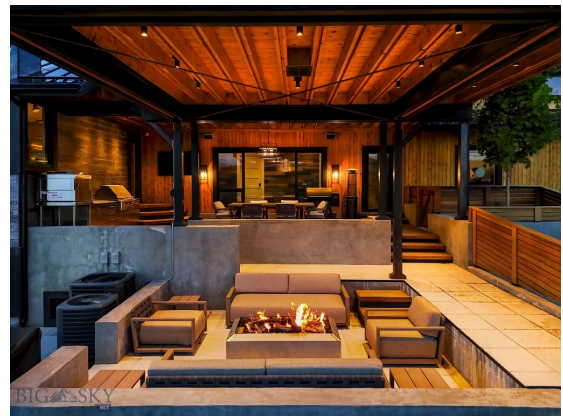
PHOTOS





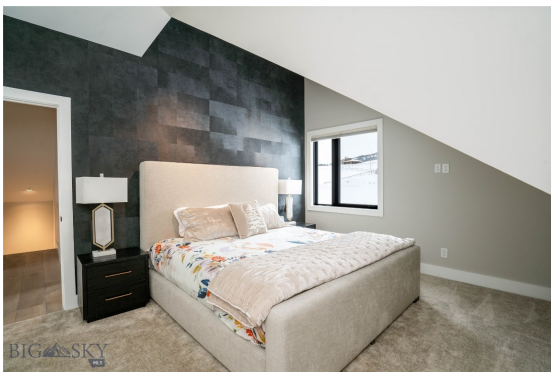
















# BOZEMAN LIFESTYLE™



Bozeman lifestyle is considered one of the most appealing in the West. Bozeman is routinely ranked as one of the best places to live, best places to retire, best place to raise a kid, best place to visit, best ski town, and best college town. Big Sky Resort is also frequently recognized as one of the world's best ski resorts, most affordable ski resort, and best ski resort for families.

Bozeman is known for its friendly people, sense of community, excellent schools and quality of life. The town has a western charm and a relaxed attitude. The Bozeman Quality Of Life index rates very well due to access to Outdoor Recreation, Amusement, Culture, Education, Medical, Religion, Restaurants and Weather. Bozeman has the cultural amenities of a local symphony and ballet, an energetic downtown restaurant and art scene, and the vibrancy of a college community. Located 16 miles north of Bozeman in the Bridger Canyon area is Bridger Bowl, a home-grown, nonprofit community ski area operating since 1955. Big Sky Resort is less than an hour away and is also frequently recognized as one of the world's best ski resorts, most affordable ski resort, and best ski resort for families.

When it comes to outdoor recreation Bozeman is surrounded by 6 different mountain ranges, which offer vast winter and summer recreational opportunities.

A world class destination for fly fishing, Bozeman is home to the world's most famous Blue Ribbon fly fishing rivers, spring creeks and lakes on Earth. The Yellowstone, Madison, Gallatin, Jefferson, Beaverhead, and Missouri rivers are all nearby.

Bozeman has 60 miles of "Main Street To Mountains" trail system in town, surrounded by 6.9 million acres of public land.

# GALLATIN COUNTY

Located in a sweeping valley in the heart of the Rocky Mountains, Gallatin County is the most populated and fastest growing county in scenic southwest Montana. Gallatin Valley has a rich history. Native Americans referred to this area as the “Valley of Flowers”. The name seems appropriate because of the great variety of wild flowers found on the mountainsides as well as in the valley. Gallatin Valley derives its name from the Gallatin River, one of the forks of the Missouri river that rises in Yellowstone Park. The Gallatin river, Jefferson river, and Madison river all merge at the town of Three Forks to form the Missouri River. Lewis and Clark named the rivers on their famous expedition to this part of the world in 1805.



There are approximately 1,682,048 acres (2,500 square miles) in Gallatin County including over 16,500 acres in surface water. Approximately 800,000 acres in Gallatin County are owned by the public and managed by several local and national agencies including the Bureau of Land Management, U.S. Forest Service, National Park Service, Montana Fish Wildlife & Parks, Montana Department of Transportation, Department of Natural Resources & Conservation and various local governments. The U.S. Forest Service is the largest land holder in Gallatin

County, currently managing over 665,000 acres. In addition to the Forest Service, various state departments manage approximately 61,000 acres. The Bureau of Land Management holds just over 9,000 acres and an additional 1,600 acres belongs to local governments. On the southern edge of Gallatin County is Yellowstone National Park. Yellowstone National Park is one of the world’s primary wildlife preserves and has the greatest concentration of geysers and hot springs in America. Yellowstone National Park is 2,219,789 acres in size (Larger than Rhode Island and Delaware combined). Over 97,600 acres of Yellowstone National Park is located within Gallatin County.



# LUXURY REAL ESTATE EXPERT

Delger Real Estate sold over \$155 Million in Real Estate in 2016-2023. Recognized experts in Internet Marketing and Technology, Delger Real Estate are able to generate maximum exposure for their real estate listings. The result: according to ListHub, Delger Real Estate listings outperform 98% of the market. We encourage you to contact Craig to learn more about real estate in Bozeman and the surrounding areas.

*POWERED BY INTELLIGENT MARKETING, PROPRIETARY TECHNOLOGY, AND  
LOCAL EXPERTISE*



**Craig Delger**  
BROKER / OWNER  
406.581.7504  
craigdelger@gmail.com

v1.01-2026-01-30