



THIS BROCHURE PROVIDED BY CRAIG DELGER - LIVINGSTON REAL ESTATE EXPERT

Powered by Data, Technology, and Local Expertise



215 S 10th Street, Livingston MT 59047

\$799,000

Acres: ± 0.161

MLS#: 402363

INTRODUCTION

Showcasing newly refinished hardwood floors on both the main and upper levels, fresh main-floor paint, updated electrical work, and upstairs bathroom renovations, 215 South 10th Street is a standout Southside offering that blends classic Livingston charm with meaningful modern updates. Ideally located just one block from an elementary school and a short stroll to downtown Livingston, this beautifully maintained 6-bedroom, 2-bathroom home spans three levels and offers existing plumbing for a third bathroom providing flexibility for future expansion. At the heart of the home, a recently renovated kitchen delivers understated luxury with curated finishes including a deVOL brass faucet and lighting, unlacquered brass cabinet hardware, and upgraded Bosch appliances, all chosen for their quality and timeless appeal. The main floor features a spacious primary suite for comfort and convenience, along with a dedicated home office ideal for remote work or creative pursuits. Upstairs, three bright bedrooms highlight the home's original architectural character, complemented by the updated bathroom. The expansive basement offers versatile space for a home gym, studio, guest quarters, or additional storage. Outside, enjoy a generous backyard perfect for entertaining or gardening, a newly built deck, and a detached two-car garage with alley access offering excellent ADU potential.



FEATURES

Status:	Contingent	Year Built:	1940
Type:	Residential	Beds:	6
Sub Type:	SingleFamilyResidence	Baths:	2
Acres:	± 0.161	Appliances:	Dryer, Dishwasher, Range, Refrigerator, Washer
Listing Date:	2025-06-06	Heating/Cooling:	ForcedAir NaturalGas None
Listing Agent:	Baily Goodwine of Maverick Realty		

LOCATION

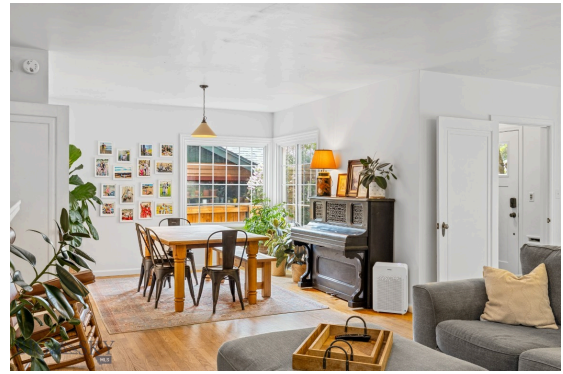


Address: 215 S 10th Street, Livingston MT 59047

PHOTOS

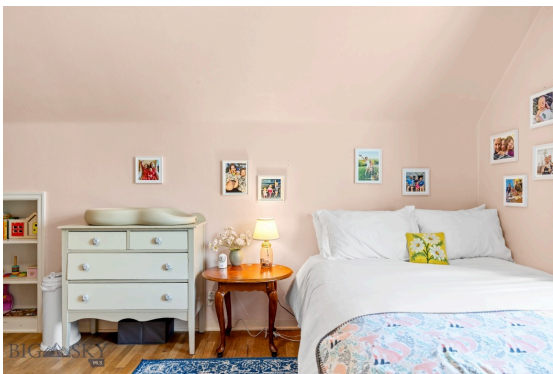












LIVINGSTON LIFESTYLE



Livingston, Montana is a historic train town from the late 1880's that has attracted cowboys, ranchers, artists, and the rich and famous who are enamored by the scenery of this area of southwestern Montana. Livingston has been featured in movies like A River Runs Through It, The Horse Whisperer, and numerous TV series and commercials.

Historic Downtown Livingston has lively restaurants and shops, some of which have been around since the late 1800' s. Livingston is known for fly fishing, cross-country skiing, horseback riding, river rafting and numerous museums, art galleries and restaurants.

When it comes to outdoor recreation the town of Livingston is surrounded by four beautiful mountain ranges, and offers the Yellowstone River, Shields River, and numerous stream and spring creeks for an abundance of outdoor activities. Bridger Bowl, a home-grown, nonprofit community ski area operating since 1955 is located 29 miles from Livingston. Big Sky Resort is 68 miles away and is also frequently recognized as one of the world's best ski resorts, most affordable ski resort, and best ski resort for families. Yellowstone National Park(2.2 million acres) is located 50 miles south of Livingston.

With a population of about 7,000 people, Livingston has the amenities and services buyers expect for a town of this size. Livingston is less than 20 minutes from Bozeman. The Livingston School District includes Elementary Schools, a Middle School, and a High School. The median price of a single family home in Livingston is 18% lower priced than single family homes in Bozeman and appeals to buyers seeking a smaller town, yet still want to be close to the amenities of Bozeman.

PARK COUNTY

Park County, Montana's estimated population is 16,438 with a growth rate of 1.94% in the past year according to the most recent United States census data. Park County, Montana is the 11th largest county in Montana. Park County has a total area of 2,813 square miles (1.8 million acres or 7,290 km²), of which 2,803 square miles (7,260 km²) is land and 10.4 square miles (27 km²) (0.4%) is water. The highest natural point in Montana, Granite Peak at 12,807 feet (3,904m), is located in Park County.



Paradise Valley is a major river valley of the Yellowstone River in southwestern Montana just north of Yellowstone National Park in the southern portion of Park County, Montana. The valley is flanked by the Absaroka Range on the east and the Gallatin Range on the west. The Yellowstone River, one of Montana's Blue Ribbon Trout Rivers, flows through Paradise Valley and is noted for world-class fly fishing in the river and nearby spring creeks such as DePuy Spring Creek. The valley hosts other natural wonders such as several natural hot springs, including Chico Hot Springs near Emigrant, Montana, La Duke Hot Springs near Gardiner, and Hunter's Hot Springs near Livingston. A small part of Yellowstone National Park is located in the extreme southern part of the county.

The northern end of Park County, Montana contains the Shields River Valley. The Shields River is a tributary of the Yellowstone River. It flows west, then south, between the Bridger Range to the west and the Crazy Mountains to the east, past Wilsall and Clyde Park. It joins the Yellowstone approximately 10 mi (16 km) northeast of Livingston, MT.

LIVINGSTON REAL ESTATE EXPERT

Delger Real Estate sold over \$155 Million in Real Estate in 2016-2023. Recognized experts in Internet Marketing and Technology, Delger Real Estate are able to generate maximum exposure for their real estate listings. The result: according to ListHub, Delger Real Estate listings outperform 98% of the market. We encourage you to contact Craig to learn more about real estate in Livingston and the surrounding areas.

*POWERED BY INTELLIGENT MARKETING, PROPRIETARY TECHNOLOGY, AND
LOCAL EXPERTISE*



Craig Delger
BROKER / OWNER
406.581.7504
craigdelger@gmail.com

v1.01-2026-02-06