

THIS BROCHURE PROVIDED BY CRAIG DELGER - LUXURY REAL ESTATE EXPERT

Powered by Data, Technology, and Local Expertise



151 Clancy Way, Bozeman MT 59718

\$2,725,000
Acres: ± 1.08
MLS#: 405896

INTRODUCTION

Welcome to this exceptional estate in the prestigious Home 40 Subdivision, Bozeman's premier south side community, known for its sweeping mountain views, expansive open space, and unparalleled amenities. Situated on just over an acre, this 4,487 sq ft custom home offers timeless design, luxurious finishes, and functional elegance throughout. Step inside to an open-concept floor plan that perfectly blends modern comfort with refined style. The heart of the home is a gourmet kitchen featuring top-of-the-line Thermador appliances, a custom island, walk-in pantry, and a stylish bar area perfect for entertaining. Gather around the floor-to-ceiling fireplace in the great room, or open the doors to the covered patio and take in the unobstructed Bridger Mountain views. The main-floor primary suite is a private retreat, complete with a spa-inspired bathroom, expansive walk-in closet, and its own dedicated patio where you can enjoy your morning coffee or evening sunsets. A separate main-floor guest bedroom and bathroom offer comfort and privacy, ideally located near a dedicated office with picturesque mountain views. Upstairs, discover two versatile loft spaces, three spacious bedrooms, one with a private ensuite and an additional full bathroom, offering flexible living and hosting options. Additional features include a heated 3-car garage with abundant storage, central A/C, a fire suppression system, whole-house water softener, and a state-of-the-art security system. Enjoy luxury living year-round with access to Home 40's exclusive community amenities: a fully equipped fitness center, outdoor pool, scenic trails, tranquil pond, and over 40 acres of preserved open space. Nestled in the heart of the Gallatin Valley, this exquisite residence offers easy access to Hyalite Reservoir, Montana State University, downtown Bozeman, and world-class skiing at Big Sky and Bridger Bowl. Don't miss this rare opportunity to own a remarkable home in one of Bozeman's most sought-after neighborhoods where luxury, lifestyle, and location converge.



FEATURES

Status:	Active
Type:	Residential
Sub Type:	SingleFamilyResidence
Acres:	± 1.08
View:	Mountains, SouthernExposure
Listing Date:	2025-09-23
Listing Agent:	Sarah & Abram Antonucci of NextHome Destination

Year Built:	2021
Beds:	5
Baths:	5
Appliances:	Dryer, Dishwasher, Disposal, Range, Refrigerator, Washer
Heating/Cooling:	ForcedAir NaturalGas CentralAir, CeilingFans

LOCATION



Address: 151 Clancy Way, Bozeman MT 59718

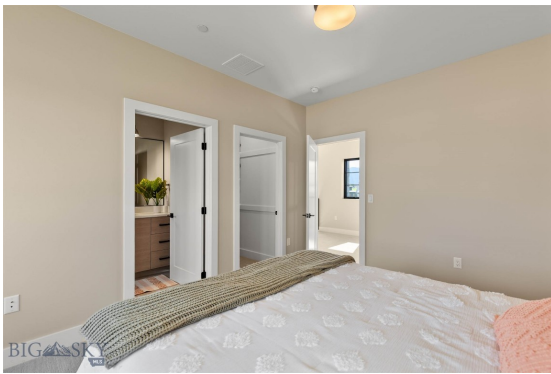
PHOTOS



















BOZEMAN LIFESTYLE™



Bozeman lifestyle is considered one of the most appealing in the West. Bozeman is routinely ranked as one of the best places to live, best places to retire, best place to raise a kid, best place to visit, best ski town, and best college town. Big Sky Resort is also frequently recognized as one of the world's best ski resorts, most affordable ski resort, and best ski resort for families.

Bozeman is known for its friendly people, sense of community, excellent schools and quality of life. The town has a western charm and a relaxed attitude. The Bozeman Quality Of Life index rates very well due to access to Outdoor Recreation, Amusement, Culture, Education, Medical, Religion, Restaurants and Weather. Bozeman has the cultural amenities of a local symphony and ballet, an energetic downtown restaurant and art scene, and the vibrancy of a college community. Located 16 miles north of Bozeman in the Bridger Canyon area is Bridger Bowl, a home-grown, nonprofit community ski area operating since 1955. Big Sky Resort is less than an hour away and is also frequently recognized as one of the world's best ski resorts, most affordable ski resort, and best ski resort for families.

When it comes to outdoor recreation Bozeman is surrounded by 6 different mountain ranges, which offer vast winter and summer recreational opportunities.

A world class destination for fly fishing, Bozeman is home to the world's most famous Blue Ribbon fly fishing rivers, spring creeks and lakes on Earth. The Yellowstone, Madison, Gallatin, Jefferson, Beaverhead, and Missouri rivers are all nearby.

Bozeman has 60 miles of "Main Street To Mountains" trail system in town, surrounded by 6.9 million acres of public land.

GALLATIN COUNTY

Located in a sweeping valley in the heart of the Rocky Mountains, Gallatin County is the most populated and fastest growing county in scenic southwest Montana. Gallatin Valley has a rich history. Native Americans referred to this area as the "Valley of Flowers". The name seems appropriate because of the great variety of wild flowers found on the mountainsides as well as in the valley. Gallatin Valley derives its name from the Gallatin River, one of the forks of the Missouri river that rises in Yellowstone Park. The Gallatin river, Jefferson river, and Madison river all merge at the town of Three Forks to form the Missouri River. Lewis and Clark named the rivers on their famous expedition to this part of the world in 1805.



There are approximately 1,682,048 acres (2,500 square miles) in Gallatin County including over 16,500 acres in surface water. Approximately 800,000 acres in Gallatin County are owned by the public and managed by several local and national agencies including the Bureau of Land Management, U.S. Forest Service, National Park Service, Montana Fish Wildlife & Parks, Montana Department of Transportation, Department of Natural Resources & Conservation and various local governments. The U.S. Forest Service is the largest land holder in Gallatin

County, currently managing over 665,000 acres. In addition to the Forest Service, various state departments manage approximately 61,000 acres. The Bureau of Land Management holds just over 9,000 acres and an additional 1,600 acres belongs to local governments. On the southern edge of Gallatin County is Yellowstone National Park. Yellowstone National Park is one of the world's primary wildlife preserves and has the greatest concentration of geysers and hot springs in America. Yellowstone National Park is 2,219,789 acres in size (Larger than Rhode Island and Delaware combined). Over 97,600 acres of Yellowstone National Park is located within Gallatin County.

LUXURY REAL ESTATE EXPERT

Delger Real Estate sold over \$155 Million in Real Estate in 2016-2023. Recognized experts in Internet Marketing and Technology, Delger Real Estate are able to generate maximum exposure for their real estate listings. The result: according to ListHub, Delger Real Estate listings outperform 98% of the market. We encourage you to contact Craig to learn more about real estate in Bozeman and the surrounding areas.

*POWERED BY INTELLIGENT MARKETING, PROPRIETARY TECHNOLOGY, AND
LOCAL EXPERTISE*



Craig Delger
BROKER / OWNER
406.581.7504
craigdelger@gmail.com

v1.01-2026-02-07