

DELGER

— REAL ESTATE —

BOZEMAN MONTANA



Craig Delger
BROKER / OWNER
406.581.7504

THIS BROCHURE PROVIDED BY CRAIG DELGER - LUXURY REAL ESTATE EXPERT

Powered by Data, Technology, and Local Expertise



3592 Bridger Canyon Road, Bozeman MT 59715

\$5,500,000
Acres: ± 42.897
MLS#: 407367

INTRODUCTION

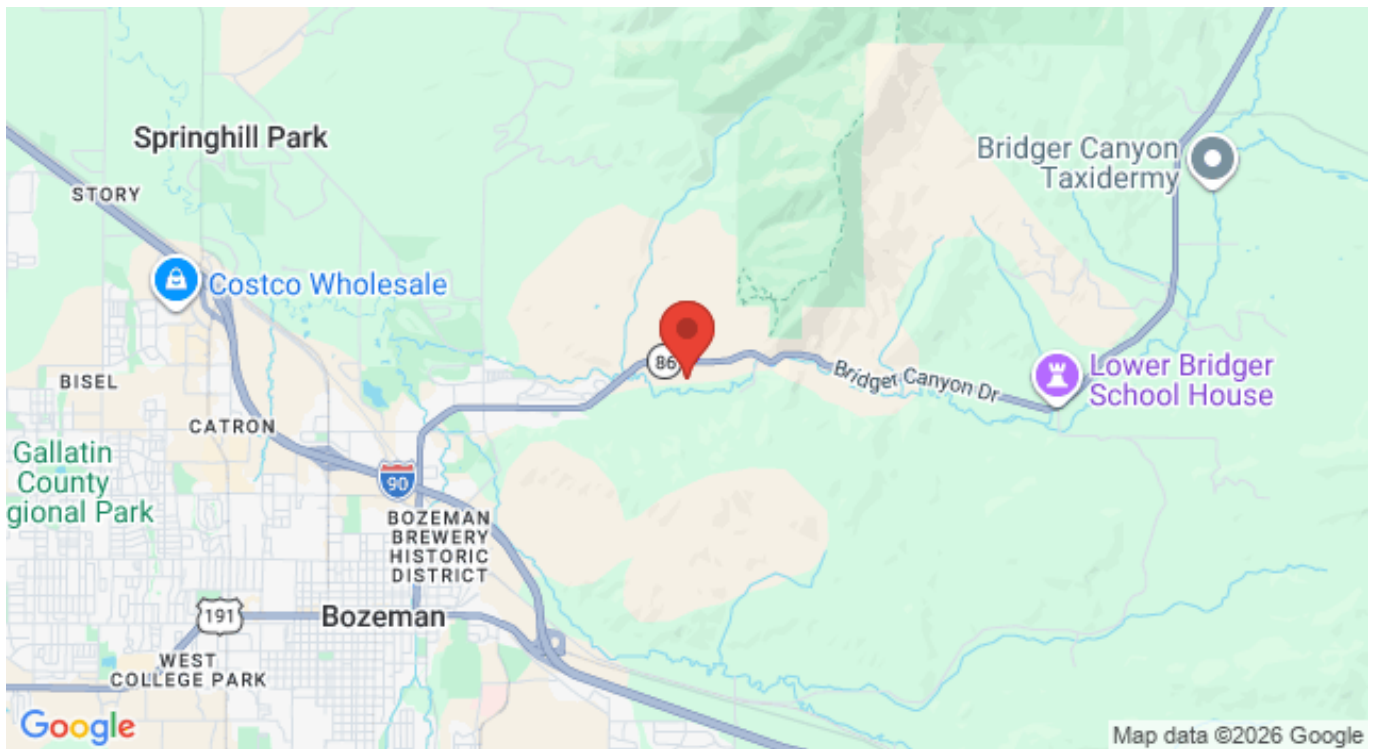
Welcome to Bridger Creek Retreat. These 42 acres represent an uncommon opportunity to create your Montana vision from the ground up. Only 5 minutes from downtown Bozeman, sitting at the doorstep of all Bridger Canyons recreational opportunities, the property feels remote, with multiple attributes of a rural experience. Bridger Creek, a year round trout stream, forms the property's southern boundary for a mile. The mature riparian area supports an abundant wildlife population of moose, elk, deer and black bear. Stepping away from cottonwoods and willows, the open meadows with quaking aspen groves and lush grasses allow for unobstructed views to the south and north east. The meadows are bordered to the north by the bench portion which acts as a screen, filtering road influence and creating privacy. The change in elevation and character suggests multiple likely build sites. Currently a 3 bed, 2 bath home suitable for rental or manager's quarters is tucked into the hillside entrance, along with several shops and garage. The Bridger Creek Retreat's 42 acres lie in 3 parcels within the Bridger Creek Special Zoning District and Agriculture Exclusive sub district. Residential use is allowed and conditional uses may include guest ranches, B&Bs and accessory dwellings. There are flood irrigation rights for the meadows which historically have produced excellent grass hay. Recreation begins right outside your door. The iconic M Trail and Drinking Horse Mountain Trailhead are two minutes away. Bridger Bowl is 15 minutes up the road along with the entire canyons beloved hikes, biking trails and camping locations. The Bridger Creek Retreat reflects the best of what living in the Gallatin Valley offers; mountain views, open space, endless recreational opportunities, only 5 minutes from the best downtown in Montana. Bozeman offers world class dining, shopping and cultural experiences when you need your espresso fix and yet gives that quick escape back to your private space. Are you looking for the perfect place to bring your Montana retreat, equestrian estate, multi generational compound or simple luxury private home vision to life? This is it.



FEATURES

Status:	Active
Type:	Land
Acres:	± 42.897
View:	Meadow, Mountains, Rural, River, SouthernExposure, CreekStream, Valley, TreesWoods
Water Features:	Creek
Listing Date:	2026-03-16
Listing Agent:	Jim Toth of Western Ranch Brokers LLC

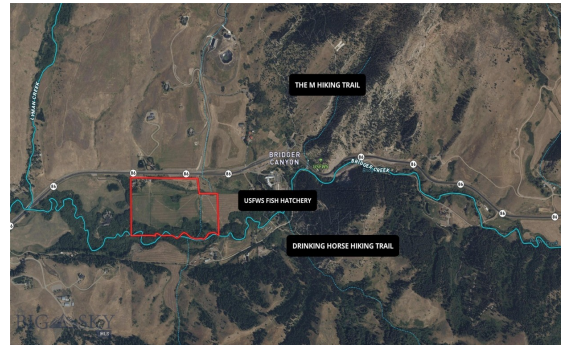
LOCATION



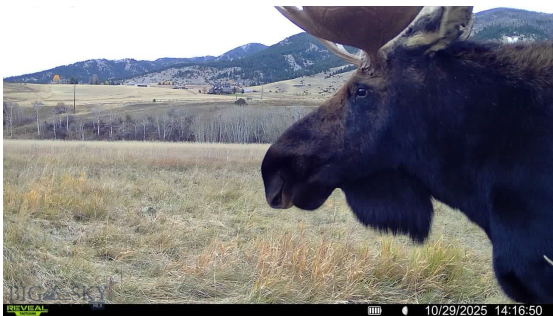
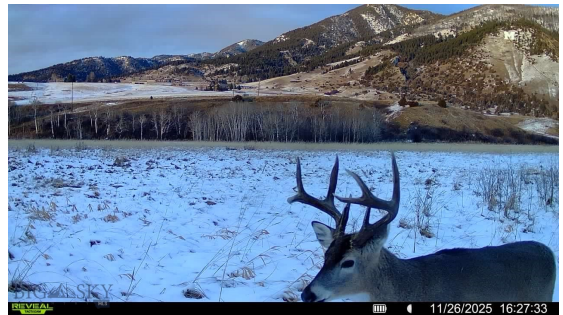
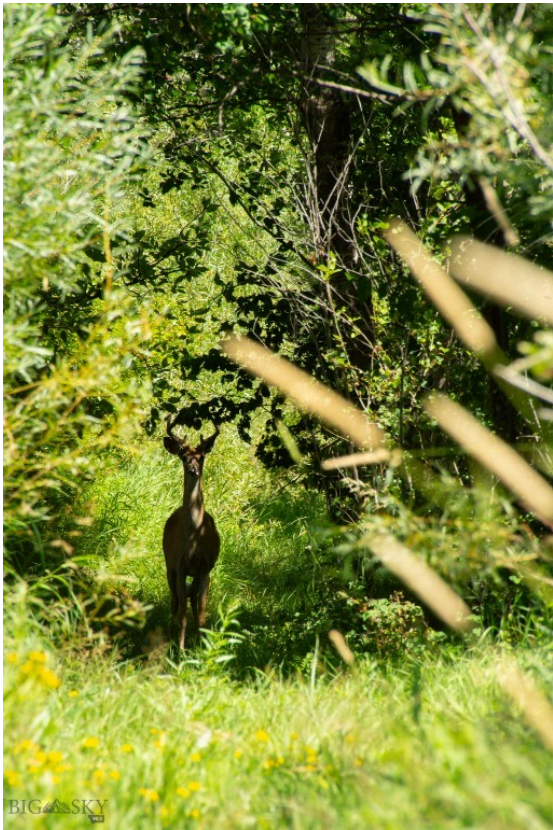
Address: 3592 Bridger Canyon Road, Bozeman MT 59715

PHOTOS

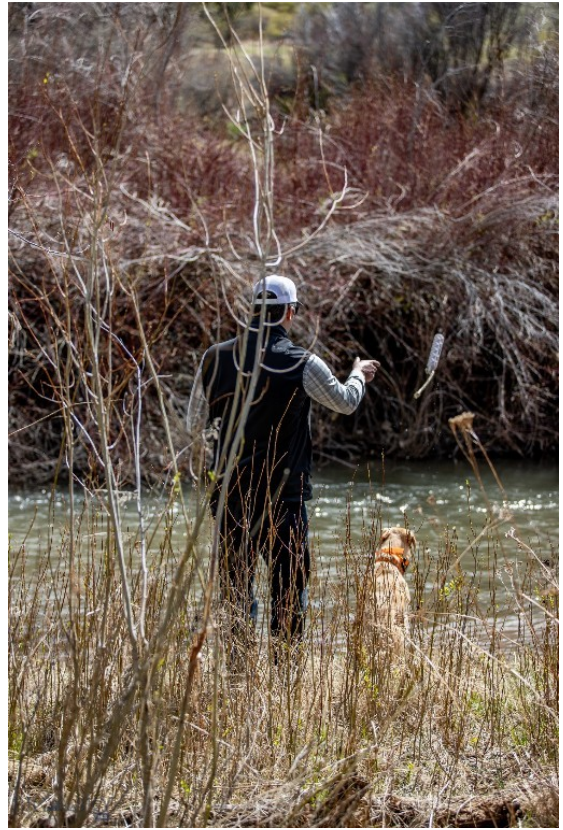














BOZEMAN LIFESTYLE™



Bozeman lifestyle is considered one of the most appealing in the West. Bozeman is routinely ranked as one of the best places to live, best places to retire, best place to raise a kid, best place to visit, best ski town, and best college town. Big Sky Resort is also frequently recognized as one of the world's best ski resorts, most affordable ski resort, and best ski resort for families.

Bozeman is known for its friendly people, sense of community, excellent schools and quality of life. The town has a western charm and a relaxed attitude. The Bozeman Quality Of Life index rates very well due to access to Outdoor Recreation, Amusement, Culture, Education, Medical, Religion, Restaurants and Weather. Bozeman has the cultural amenities of a local symphony and ballet, an energetic downtown restaurant and art scene, and the vibrancy of a college community. Located 16 miles north of Bozeman in the Bridger Canyon area is Bridger Bowl, a home-grown, nonprofit community ski area operating since 1955. Big Sky Resort is less than an hour away and is also frequently recognized as one of the world's best ski resorts, most affordable ski resort, and best ski resort for families.

When it comes to outdoor recreation Bozeman is surrounded by 6 different mountain ranges, which offer vast winter and summer recreational opportunities.

A world class destination for fly fishing, Bozeman is home to the world's most famous Blue Ribbon fly fishing rivers, spring creeks and lakes on Earth. The Yellowstone, Madison, Gallatin, Jefferson, Beaverhead, and Missouri rivers are all nearby.

Bozeman has 60 miles of "Main Street To Mountains" trail system in town, surrounded by 6.9 million acres of public land.

GALLATIN COUNTY

Located in a sweeping valley in the heart of the Rocky Mountains, Gallatin County is the most populated and fastest growing county in scenic southwest Montana. Gallatin Valley has a rich history. Native americans referred to this area as the “Valley of Flowers”. The name seems appropriate because of the great variety of wild flowers found on the mountainsides as well as in the valley. Gallatin Valley derives its name from the Gallatin River, one of the forks of the Missouri river that rises in Yellowstone Park. The Gallatin river, Jefferson river, and Madison river all merge at the town of Three Forks to form the Missouri River. Lewis and Clark named the rivers on their famous expedition to this part of the world in 1805.



There are approximately 1,682,048 acres(2,500 square miles) in Gallatin County including over 16,500 acres in surface water. Approximately 800,000 acres in Gallatin County are owned by the public and managed by several local and national agencies including the Bureau of Land Management, U.S. Forest Service, National Park Service, Montana Fish Wildlife & Parks, Montana Department of Transportation, Department of Natural Resources & Conservation and various local governments. The U.S. Forest Service is the largest land holder in Gallatin

County, currently managing over 665,000 acres. In addition to the Forest Service, various state departments manage approximately 61,000 acres. The Bureau of Land Management holds just over 9,000 acres and an additional 1,600 acres belongs to local governments. On the southern edge of Gallatin County is Yellowstone National Park. Yellowstone National Park is one of the world’s primary wildlife preserves and has the greatest concentration of geysers and hot springs in America. Yellowstone National Park is 2,219,789 acres in size(Larger than Rhode Island and Delaware combined). Over 97,600 acres of Yellowstone National Park is located within Gallatin County.

LUXURY REAL ESTATE EXPERT

Delger Real Estate sold over \$155 Million in Real Estate in 2016-2023. Recognized experts in Internet Marketing and Technology, Delger Real Estate are able to generate maximum exposure for their real estate listings. The result: according to ListHub, Delger Real Estate listings outperform 98% of the market. We encourage you to contact Craig to learn more about real estate in Bozeman and the surrounding areas.

POWERED BY INTELLIGENT MARKETING, PROPRIETARY TECHNOLOGY, AND LOCAL EXPERTISE



Craig Delger
BROKER / OWNER
406.581.7504
craigdelger@gmail.com

v1.01-2026-05-27