

DELGER

— REAL ESTATE —

BOZEMAN MONTANA



Craig Delger
BROKER / OWNER
406.581.7504

THIS BROCHURE PROVIDED BY CRAIG DELGER - BOZEMAN REAL ESTATE EXPERT

Powered by Data, Technology, and Local Expertise



1036 Oak Park Drive, Bozeman MT 59715

\$849,000

Acres: ± 0.0895

MLS#: 407752

DELGER
— REAL ESTATE —
BOZEMAN MONTANA

DelgerRealEstate.com

MLS REAL ESTATE SERVICE
MLS 
Information deemed reliable,
but not guaranteed

INTRODUCTION

Newer Greater Price!!! Custom real Montana feel townhome in the heart of Bozeman. Minutes from Main, 19th and 7th. 15 minutes to BZN airport. Across from a 2.75 acre park. This 3 bed/2.5 bath, 2500 sq ft home went through an extensive remodel in 2022 and has been lightly lived in since then. Inside this beautiful home you will find reclaimed antique timbers, 2 story stone fireplace, professional lighting design by renowned artisan Ironglass Lighting, custom designed hand hammered metal railings /accents, a stunning kitchen hood and a one-of-a-kind primary suite vanity that is a must see! Inviting entry has radiant floor heat and a gorgeous office with a huge rustic timber door. The kitchen boasts leathered granite countertops with black stainless profile appliances, as well as a pot filler and cabinet lighting. The kitchen/living/dining are open and inviting. The gas fireplace provides a cozy, warm winter hideaway while the summer months can be enjoyed via 2 main level porches and 2 upper level decks including one off the primary that will provide a quiet setting to enjoy the beautiful Montana sunsets over the park. In addition to the private deck, the primary bedroom also boasts a luxurious walk-in closet, huge soaking tub, 6 showerhead Montana Travertine tiled shower and heated floors. The two guestrooms each have walk-in closets as well as a nicely appointed guest bath with a stone vessel sink and more Montana Travertine tile. The upper level entertainment area includes a wet bar with minifridge, surround sound theater system with a 75" Bavaria television. This home can be purchased furnished to provide a nearly turnkey property.

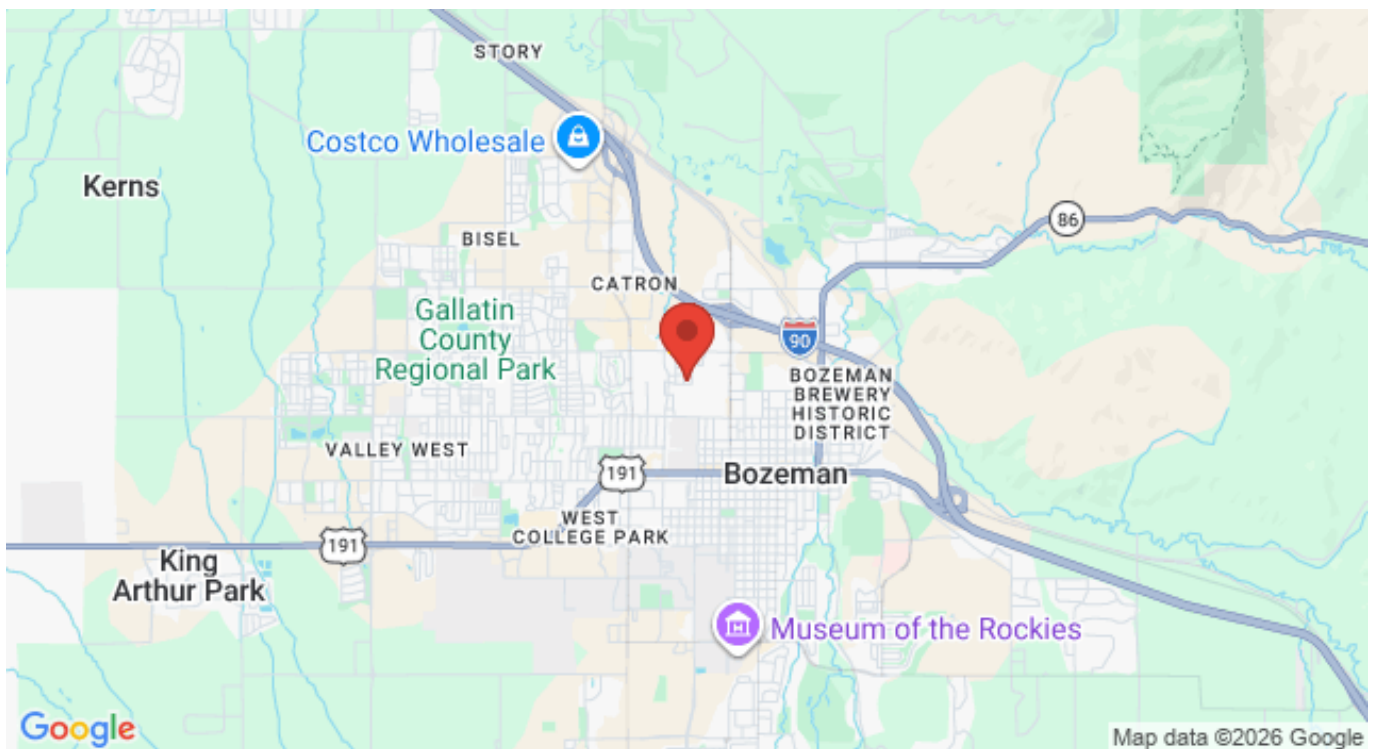


FEATURES

Status:	Active
Type:	Residential
Sub Type:	Townhouse
Acres:	± 0.0895
View:	Meadow, Mountains
Water Features:	None
Listing Date:	2026-01-05
Listing Agent:	Curt VanDyken of Venture West Realty

Style:	Custom
Year Built:	2007
Beds:	3
Baths:	3
Appliances:	Dryer, Dishwasher, Disposal, Microwave, Range, Refrigerator, Washer, SomeGasAppliances, Stove
Heating/Cooling:	ForcedAir RadiantFloor CentralAir

LOCATION



Address: 1036 Oak Park Drive, Bozeman MT 59715

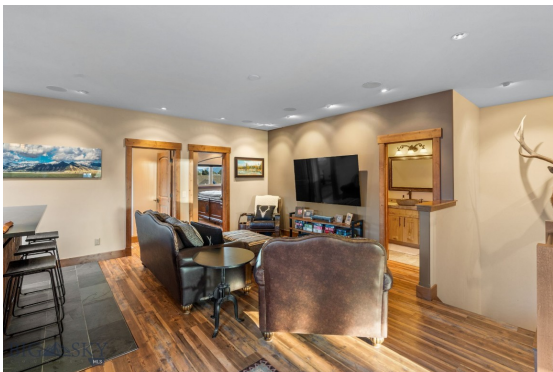
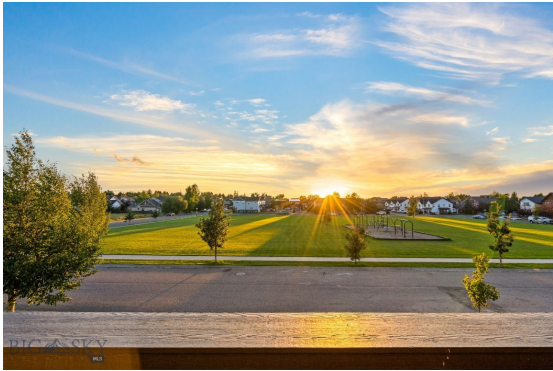
PHOTOS



















BOZEMAN LIFESTYLE™



Bozeman lifestyle is considered one of the most appealing in the West. Bozeman is routinely ranked as one of the best places to live, best places to retire, best place to raise a kid, best place to visit, best ski town, and best college town. Big Sky Resort is also frequently recognized as one of the world's best ski resorts, most affordable ski resort, and best ski resort for families.

Bozeman is known for its friendly people, sense of community, excellent schools and quality of life. The town has a western charm and a relaxed attitude. The Bozeman Quality Of Life index rates very well due to access to Outdoor Recreation, Amusement, Culture, Education, Medical, Religion, Restaurants and Weather. Bozeman has the cultural amenities of a local symphony and ballet, an energetic downtown restaurant and art scene, and the vibrancy of a college community. Located 16 miles north of Bozeman in the Bridger Canyon area is Bridger Bowl, a home-grown, nonprofit community ski area operating since 1955. Big Sky Resort is less than an hour away and is also frequently recognized as one of the world's best ski resorts, most affordable ski resort, and best ski resort for families.

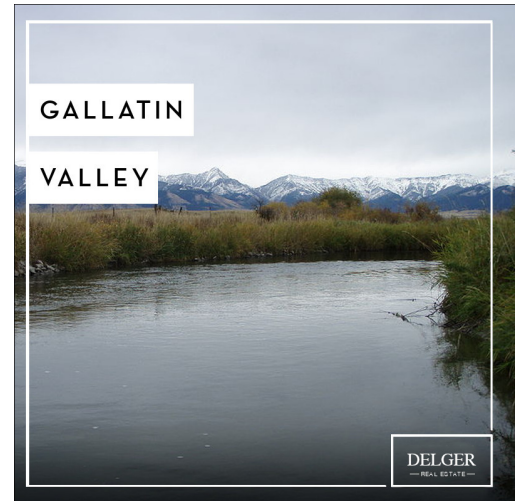
When it comes to outdoor recreation Bozeman is surrounded by 6 different mountain ranges, which offer vast winter and summer recreational opportunities.

A world class destination for fly fishing, Bozeman is home to the world's most famous Blue Ribbon fly fishing rivers, spring creeks and lakes on Earth. The Yellowstone, Madison, Gallatin, Jefferson, Beaverhead, and Missouri rivers are all nearby.

Bozeman has 60 miles of "Main Street To Mountains" trail system in town, surrounded by 6.9 million acres of public land.

GALLATIN COUNTY

Located in a sweeping valley in the heart of the Rocky Mountains, Gallatin County is the most populated and fastest growing county in scenic southwest Montana. Gallatin Valley has a rich history. Native Americans referred to this area as the "Valley of Flowers". The name seems appropriate because of the great variety of wild flowers found on the mountainsides as well as in the valley. Gallatin Valley derives its name from the Gallatin River, one of the forks of the Missouri river that rises in Yellowstone Park. The Gallatin river, Jefferson river, and Madison river all merge at the town of Three Forks to form the Missouri River. Lewis and Clark named the rivers on their famous expedition to this part of the world in 1805.



There are approximately 1,682,048 acres (2,500 square miles) in Gallatin County including over 16,500 acres in surface water. Approximately 800,000 acres in Gallatin County are owned by the public and managed by several local and national agencies including the Bureau of Land Management, U.S. Forest Service, National Park Service, Montana Fish Wildlife & Parks, Montana Department of Transportation, Department of Natural Resources & Conservation and various local governments. The U.S. Forest Service is the largest land holder in Gallatin

County, currently managing over 665,000 acres. In addition to the Forest Service, various state departments manage approximately 61,000 acres. The Bureau of Land Management holds just over 9,000 acres and an additional 1,600 acres belongs to local governments. On the southern edge of Gallatin County is Yellowstone National Park. Yellowstone National Park is one of the world's primary wildlife preserves and has the greatest concentration of geysers and hot springs in America. Yellowstone National Park is 2,219,789 acres in size (Larger than Rhode Island and Delaware combined). Over 97,600 acres of Yellowstone National Park is located within Gallatin County.

BOZEMAN REAL ESTATE EXPERT

Delger Real Estate sold over \$155 Million in Real Estate in 2016-2023. Recognized experts in Internet Marketing and Technology, Delger Real Estate are able to generate maximum exposure for their real estate listings. The result: according to ListHub, Delger Real Estate listings outperform 98% of the market. We encourage you to contact Craig to learn more about real estate in Bozeman and the surrounding areas.

POWERED BY INTELLIGENT MARKETING, PROPRIETARY TECHNOLOGY, AND LOCAL EXPERTISE



Craig Delger
BROKER / OWNER
406.581.7504
craigdelger@gmail.com

v1.01-2026-06-18