

# DELGER

— REAL ESTATE —

BOZEMAN MONTANA



Craig Delger  
BROKER / OWNER  
406.581.7504

**THIS BROCHURE PROVIDED BY CRAIG DELGER - LUXURY REAL ESTATE EXPERT**

*Powered by Data, Technology, and Local Expertise*



## 1408 N Jackrabbit Lane, Belgrade MT 59714

\$3,160,000  
Acres: ± 1.772  
MLS#: 407977

# INTRODUCTION

Located in Belgrade, MT, this commercial property features a 12,224 SF office/warehouse building plus an additional building pad for future expansion. Situated on 1.77 acres near Bozeman Yellowstone International Airport (BZN), the property was built in 2022 and includes approximately 9,300 SF of warehouse space and 2,940 SF of office. The clear-span warehouse offers 16 ceiling heights and is equipped with two dock-high doors (truck well) and two grade-level roll-up doors. Warehouse improvements include a polished concrete slab, LED lighting, gas-fired unit heaters, and a dedicated restroom. The fully climate-controlled office space is well finished and has never been occupied. The lower level features an open work area, two private offices, a kitchenette/breakroom with washer and dryer, and a restroom. The upper level includes an open area, two private offices, a restroom with shower, and storage. The entire building is equipped with a fire suppression system and monitored alarm system and is serviced by city water, sewer, natural gas, and electricity. Stick-built construction with metal siding provides a clean, modern aesthetic, while the asphalt-paved parking lot and yard offer excellent access and outdoor storage. An additional building pad towards the front of the site allows for construction of an approximately 9,000 SF building, creating a compelling value-add opportunity. Ideal for an owner-user interested in a turn-key property or investor seeking strong cash flow.



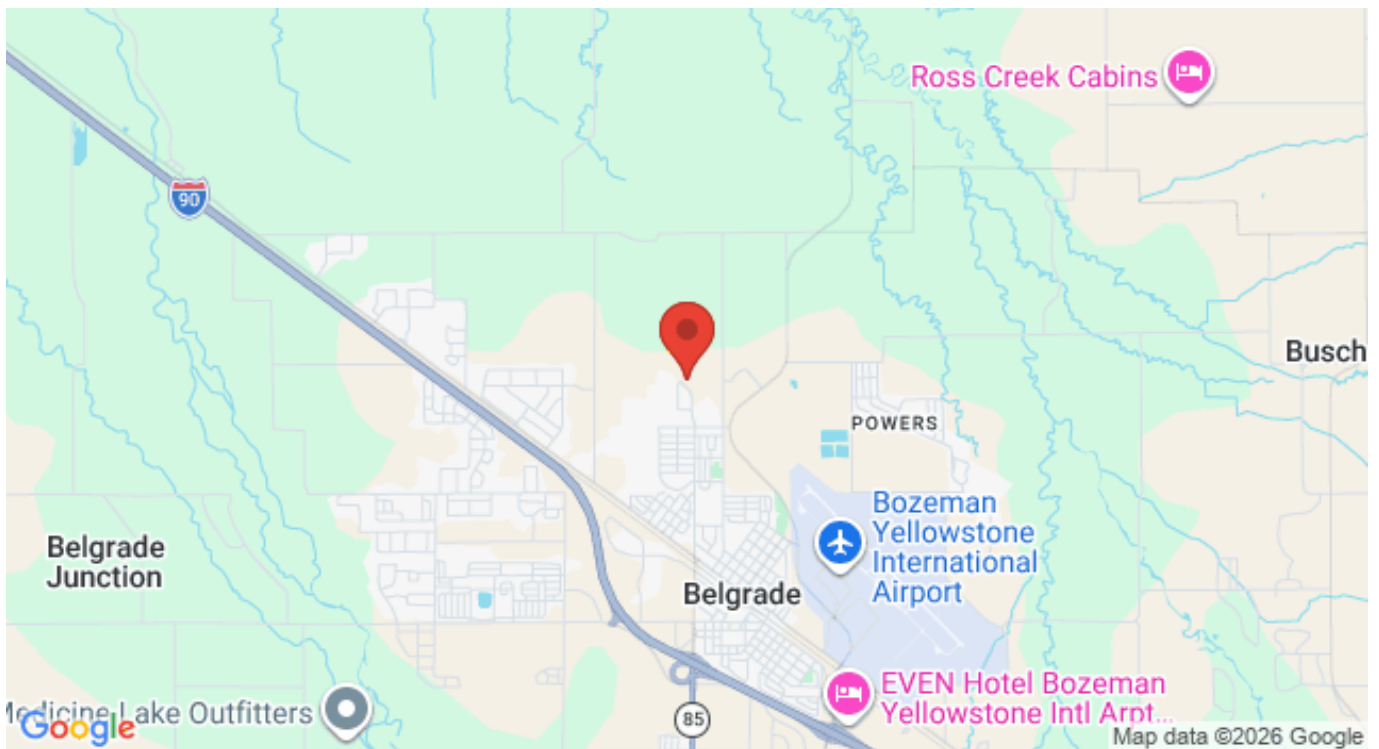


## FEATURES

<b>Status:</b>	Contingent
<b>Type:</b>	CommercialSale
<b>Sub Type:</b>	Building,Commercial
<b>Acres:</b>	± 1.772
<b>Listing Date:</b>	2026-01-13
<b>Listing Agent:</b>	Michael Reams of Starner Commercial Real Estate

<b>Year Built:</b>	2022
<b>Baths:</b>	3
<b>Heating/Cooling:</b>	ForcedAir Gas NaturalGas CentralAir

## LOCATION



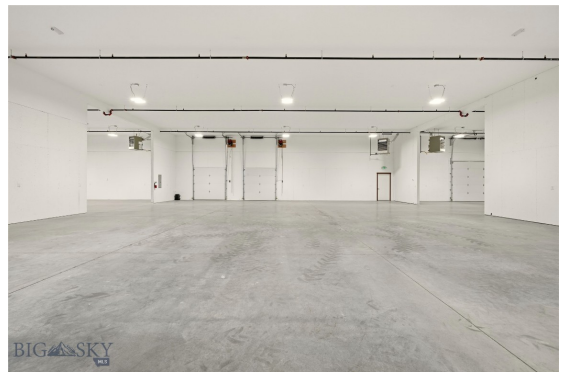
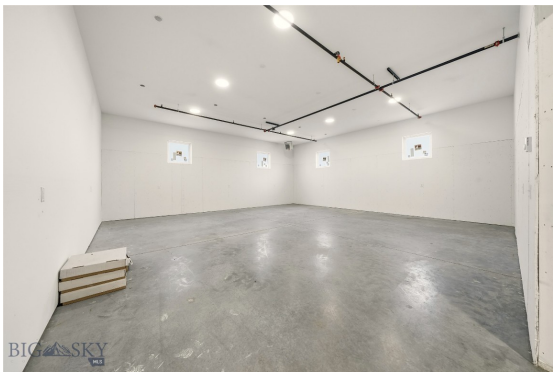
Address: 1408 N Jackrabbit Lane, Belgrade MT 59714

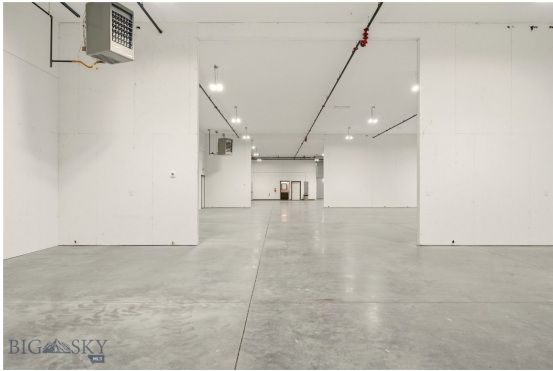
# PHOTOS















# BELGRADE LIFESTYLE



With a population of about 8,000 people, Belgrade has the amenities and services buyers expect for a town of this size. The Belgrade School District includes Elementary Schools, a Middle School, and a High School. Belgrade neighborhoods and surrounding areas are experiencing significant population growth, with numerous new subdivisions under development. Belgrade, Montana is located just 11 miles to the northwest of Bozeman, Montana making it a desirable location. Many Belgrade Homes for sale have views of the mountain ranges and open land surrounding the Gallatin Valley.

Homes in Belgrade offer convenient access to the Bozeman Yellowstone International Airport, and to the Interstate. Belgrade has a small downtown area with grocery stores, restaurants, and shopping. Belgrade is just over 10 minutes from Bozeman's N 19th Ave shopping district which includes stores like Costco, Target, etc.

When it comes to outdoor recreation Belgrade is surrounded by 6 different mountain ranges, which offer vast winter and summer recreational opportunities. Bridger Bowl, a home-grown, nonprofit community ski area operating since 1955 is located 24 miles from Belgrade. Big Sky Resort is 44 miles away and is also frequently recognized as one of the world's best ski resorts, most affordable ski resort, and best ski resort for families.

The world's most famous Blue Ribbon fly fishing rivers (Yellowstone, Madison, Gallatin, Jefferson, Beaverhead, and Missouri rivers) are all nearby making this area a world class destination for fly fishing. Yellowstone National Park (2.2 million acres) is located 90 miles south of Belgrade, Montana.

The median price of a single family home in Belgrade is 30% lower priced than single family homes in Bozeman and appeals to buyers seeking lower priced real estate, yet still want to be close to the amenities of Bozeman.

# GALLATIN COUNTY

Located in a sweeping valley in the heart of the Rocky Mountains, Gallatin County is the most populated and fastest growing county in scenic southwest Montana. Gallatin Valley has a rich history. Native americans referred to this area as the “Valley of Flowers”. The name seems appropriate because of the great variety of wild flowers found on the mountainsides as well as in the valley. Gallatin Valley derives its name from the Gallatin River, one of the forks of the Missouri river that rises in Yellowstone Park. The Gallatin river, Jefferson river, and Madison river all merge at the town of Three Forks to form the Missouri River. Lewis and Clark named the rivers on their famous expedition to this part of the world in 1805.



There are approximately 1,682,048 acres(2,500 square miles) in Gallatin County including over 16,500 acres in surface water. Approximately 800,000 acres in Gallatin County are owned by the public and managed by several local and national agencies including the Bureau of Land Management, U.S. Forest Service, National Park Service, Montana Fish Wildlife & Parks, Montana Department of Transportation, Department of Natural Resources & Conservation and various local governments. The U.S. Forest Service is the largest land holder in Gallatin

County, currently managing over 665,000 acres. In addition to the Forest Service, various state departments manage approximately 61,000 acres. The Bureau of Land Management holds just over 9,000 acres and an additional 1,600 acres belongs to local governments. On the southern edge of Gallatin County is Yellowstone National Park. Yellowstone National Park is one of the world’s primary wildlife preserves and has the greatest concentration of geysers and hot springs in America. Yellowstone National Park is 2,219,789 acres in size(Larger than Rhode Island and Delaware combined). Over 97,600 acres of Yellowstone National Park is located within Gallatin County.

# LUXURY REAL ESTATE EXPERT

Delger Real Estate sold over \$155 Million in Real Estate in 2016-2023. Recognized experts in Internet Marketing and Technology, Delger Real Estate are able to generate maximum exposure for their real estate listings. The result: according to ListHub, Delger Real Estate listings outperform 98% of the market. We encourage you to contact Craig to learn more about real estate in Belgrade and the surrounding areas.

*POWERED BY INTELLIGENT MARKETING, PROPRIETARY TECHNOLOGY, AND LOCAL EXPERTISE*



**Craig Delger**  
BROKER / OWNER  
406.581.7504  
craigdelger@gmail.com

v1.01-2026-04-30