

DELGER

— REAL ESTATE —

BOZEMAN MONTANA



Craig Delger
BROKER / OWNER
406.581.7504

THIS BROCHURE PROVIDED BY CRAIG DELGER - LUXURY REAL ESTATE EXPERT

Powered by Data, Technology, and Local Expertise



9670 Prairie Rd, Bozeman MT 59741

\$3,495,000

Acres: ± 20.3

MLS#: 408062

INTRODUCTION

A masterpiece of sustainable design, this exceptional, gated estate redefines sophisticated Western living. Envisioned for the connoisseur of quiet opulence, the residence seamlessly integrates state-of-the-art geothermal and a comprehensive, seller owned, solar array, culminating in an astonishing operational cost of approximately \$60 per annum. Commanding the landscape from 20 private acres, the property offers uninterrupted 360-degree panoramas of the Bridger Mountains, Horseshoe Hills, Tobacco Root, and Gallatin Ranges. Every aspect of this sanctuary exudes refined elegance, blending rustic textures with modern functionality and premium finishes. For the equestrian, a beautifully appointed 3-stall barn with auto waterers, wash facility, tack room, 60ft arena, and 3 fenced pastures with dry lots await. The discerning amateur astronomer will appreciate the private observatory with Meade 12in RCX goto telescope, location offering pristine, dark skies. Inside, discover an open-concept, 4B|4B single-level layout featuring a chef's kitchen with double sinks, abundant storage with large walk-in pantry, highly efficient gas fireplace, luxury primary suite with his and hers vanities, whole house in-floor radiant heat, AC, a dedicated theater room with stadium seating, a professional subterranean heated and cooled greenhouse and workshop. The expansive covered patio overlooks a backyard oasis with irrigated landscape beds and lawns, a garden, and a custom gas fire pit, capturing some of the most commanding mountain vistas in the region. Located near 2 world-class fly fishing rivers, Bozeman, Big Sky, and Yellowstone International Airport. Additional amenities include a security camera system, quad insulated windows with UV block, newer 50year roof, newly upgraded well pump system, Generac generator, and the ability to subdivide. NO HOA. MINIMAL Covenants. This is more than a home; it is an experience of unparalleled quality, privacy and bespoke tranquility." _____



BIG SKY
MLS

FEATURES

Status:	Active
Type:	Residential
Sub Type:	SingleFamilyResidence
Acres:	± 20.3
View:	Farmland, Mountains, SouthernExposure, Valley
Listing Date:	2026-01-20
Listing Agent:	Taunya Fagan of Taunya Fagan RE @ Estate House

Style:	Custom
Year Built:	2010
Beds:	4
Baths:	4
Appliances:	BuiltInOven, Cooktop, Dryer, Dishwasher, Freezer, Disposal, Microwave, Refrigerator, WaterSoftener, Washer
Heating/Cooling:	Propane RadiantFloor Solar CentralAir, CeilingFans

LOCATION



Address: 9670 Prairie Rd, Bozeman MT 59741

PHOTOS

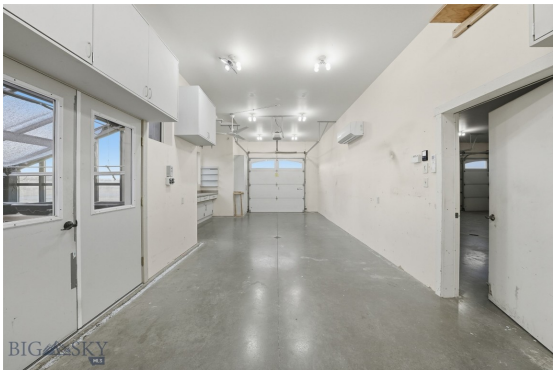


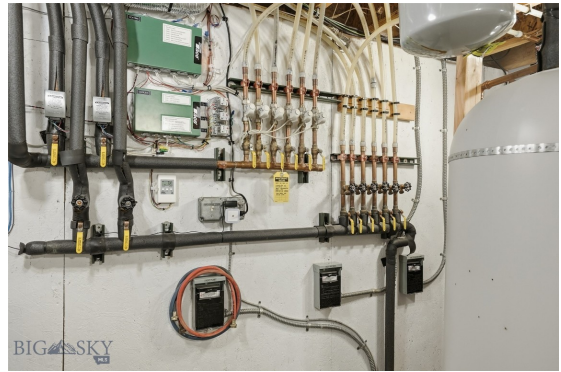












BOZEMAN LIFESTYLE™



Bozeman lifestyle is considered one of the most appealing in the West. Bozeman is routinely ranked as one of the best places to live, best places to retire, best place to raise a kid, best place to visit, best ski town, and best college town. Big Sky Resort is also frequently recognized as one of the world's best ski resorts, most affordable ski resort, and best ski resort for families.

Bozeman is known for its friendly people, sense of community, excellent schools and quality of life. The town has a western charm and a relaxed attitude. The Bozeman Quality Of Life index rates very well due to access to Outdoor Recreation, Amusement, Culture, Education, Medical, Religion, Restaurants and Weather. Bozeman has the cultural amenities of a local symphony and ballet, an energetic downtown restaurant and art scene, and the vibrancy of a college community. Located 16 miles north of Bozeman in the Bridger Canyon area is Bridger Bowl, a home-grown, nonprofit community ski area operating since 1955. Big Sky Resort is less than an hour away and is also frequently recognized as one of the world's best ski resorts, most affordable ski resort, and best ski resort for families.

When it comes to outdoor recreation Bozeman is surrounded by 6 different mountain ranges, which offer vast winter and summer recreational opportunities.

A world class destination for fly fishing, Bozeman is home to the world's most famous Blue Ribbon fly fishing rivers, spring creeks and lakes on Earth. The Yellowstone, Madison, Gallatin, Jefferson, Beaverhead, and Missouri rivers are all nearby.

Bozeman has 60 miles of "Main Street To Mountains" trail system in town, surrounded by 6.9 million acres of public land.

GALLATIN COUNTY

Located in a sweeping valley in the heart of the Rocky Mountains, Gallatin County is the most populated and fastest growing county in scenic southwest Montana. Gallatin Valley has a rich history. Native Americans referred to this area as the "Valley of Flowers". The name seems appropriate because of the great variety of wild flowers found on the mountainsides as well as in the valley. Gallatin Valley derives its name from the Gallatin River, one of the forks of the Missouri river that rises in Yellowstone Park. The Gallatin river, Jefferson river, and Madison river all merge at the town of Three Forks to form the Missouri River. Lewis and Clark named the rivers on their famous expedition to this part of the world in 1805.



There are approximately 1,682,048 acres (2,500 square miles) in Gallatin County including over 16,500 acres in surface water. Approximately 800,000 acres in Gallatin County are owned by the public and managed by several local and national agencies including the Bureau of Land Management, U.S. Forest Service, National Park Service, Montana Fish Wildlife & Parks, Montana Department of Transportation, Department of Natural Resources & Conservation and various local governments. The U.S. Forest Service is the largest land holder in Gallatin

County, currently managing over 665,000 acres. In addition to the Forest Service, various state departments manage approximately 61,000 acres. The Bureau of Land Management holds just over 9,000 acres and an additional 1,600 acres belongs to local governments. On the southern edge of Gallatin County is Yellowstone National Park. Yellowstone National Park is one of the world's primary wildlife preserves and has the greatest concentration of geysers and hot springs in America. Yellowstone National Park is 2,219,789 acres in size (Larger than Rhode Island and Delaware combined). Over 97,600 acres of Yellowstone National Park is located within Gallatin County.

LUXURY REAL ESTATE EXPERT

Delger Real Estate sold over \$155 Million in Real Estate in 2016-2023. Recognized experts in Internet Marketing and Technology, Delger Real Estate are able to generate maximum exposure for their real estate listings. The result: according to ListHub, Delger Real Estate listings outperform 98% of the market. We encourage you to contact Craig to learn more about real estate in Bozeman and the surrounding areas.

POWERED BY INTELLIGENT MARKETING, PROPRIETARY TECHNOLOGY, AND LOCAL EXPERTISE



Craig Delger
BROKER / OWNER
406.581.7504
craigdelger@gmail.com

v1.01-2026-05-25