

DELGER

— REAL ESTATE —

BOZEMAN MONTANA



Craig Delger
BROKER / OWNER
406.581.7504

THIS BROCHURE PROVIDED BY CRAIG DELGER - LUXURY REAL ESTATE EXPERT

Powered by Data, Technology, and Local Expertise



419 S 3rd Avenue, Bozeman MT 59715

\$2,695,000

Acres: ±

MLS#: 408321

INTRODUCTION

Opportunity knocks - This unique and high performing triplex offers a trifecta of built-in value: a historic footprint, a proven income stream for over 25 years and a coveted location in the heart of historic Bozeman. First time on market in over 25 years! Situated just blocks from Main Street shopping, dining and amenities and minutes to Montana State University, this property is the perfect blend of location and lucrative investment potential. Fully rented and priced to sell at a 5.8% cap rate, the property consists of three intentionally built units. The front unit is a charming Queen Anne style two story home known as the Susan Kirk Residence. Featuring up to 5 beds: 4 conventional beds plus a walk-through flex/office and two baths. The main floor features spacious living areas, kitchen and bath. The home has been well maintained and includes a side driveway for parking, enclosed front and rear entryways and retains its historic charm with colorful paint and gingerbread elements including scalloped shingles and a variety of exterior siding textures. An attached duplex features Piping Plovers from the Craigshead Institutes Murals of threatened and Endangered Species Project. The duplex consists of two side by side units, each with 5 bedrooms and 2.5 bathrooms, featuring spacious living and kitchen areas and additional flex space. An expandable rooftop solar array is connected to the north duplex unit and features EV charging. Concrete parking area features parking for 4 vehicles. A 2-car detached garage is currently used by the owners includes space for a shop/storage. There are several communal bike storage areas on the property including a covered pavilion. Yard spaces have been improved with thoughtful native landscaping and raised garden planters for the occupants to enjoy. Mature trees and shrubs allow for privacy and shade in summer. Many possibilities exist to make the property your own (maintain/condex/development). This is a wonderfully convenient southside Bozeman location only minutes to Montana State University, hospital, shopping, breweries, music venues, grocery stores, restaurants, services and amenities. Only 25 minutes to Bridger Bowl, 30 minutes to blue ribbon fly-fishing and river recreation, and 1 hour to Big Sky. Please dont disturb the tenants shown by advanced appointment only. Dont miss the VR Matterport Tour.



FEATURES

Status:	Active
Type:	ResidentialIncome
Sub Type:	Triplex
View:	TreesWoods
Water Features:	None
Listing Date:	2026-02-02
Listing Agent:	Marcie Hahn-Knoff of Knoff Group Real Estate

Style:	Contemporary, Victorian
Year Built:	1981
Appliances:	Dryer, Washer
Heating/Cooling:	Baseboard Electric RadiantFloor Stove CeilingFans

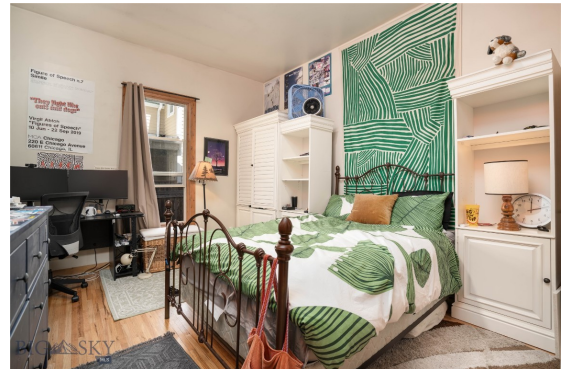
LOCATION



Address: 419 S 3rd Avenue, Bozeman MT 59715

PHOTOS



















BOZEMAN LIFESTYLE™



Bozeman lifestyle is considered one of the most appealing in the West. Bozeman is routinely ranked as one of the best places to live, best places to retire, best place to raise a kid, best place to visit, best ski town, and best college town. Big Sky Resort is also frequently recognized as one of the world's best ski resorts, most affordable ski resort, and best ski resort for families.

Bozeman is known for its friendly people, sense of community, excellent schools and quality of life. The town has a western charm and a relaxed attitude. The Bozeman Quality Of Life index rates very well due to access to Outdoor Recreation, Amusement, Culture, Education, Medical, Religion, Restaurants and Weather. Bozeman has the cultural amenities of a local symphony and ballet, an energetic downtown restaurant and art scene, and the vibrancy of a college community. Located 16 miles north of Bozeman in the Bridger Canyon area is Bridger Bowl, a home-grown, nonprofit community ski area operating since 1955. Big Sky Resort is less than an hour away and is also frequently recognized as one of the world's best ski resorts, most affordable ski resort, and best ski resort for families.

When it comes to outdoor recreation Bozeman is surrounded by 6 different mountain ranges, which offer vast winter and summer recreational opportunities.

A world class destination for fly fishing, Bozeman is home to the world's most famous Blue Ribbon fly fishing rivers, spring creeks and lakes on Earth. The Yellowstone, Madison, Gallatin, Jefferson, Beaverhead, and Missouri rivers are all nearby.

Bozeman has 60 miles of "Main Street To Mountains" trail system in town, surrounded by 6.9 million acres of public land.

GALLATIN COUNTY

Located in a sweeping valley in the heart of the Rocky Mountains, Gallatin County is the most populated and fastest growing county in scenic southwest Montana. Gallatin Valley has a rich history. Native americans referred to this area as the “Valley of Flowers”. The name seems appropriate because of the great variety of wild flowers found on the mountainsides as well as in the valley. Gallatin Valley derives its name from the Gallatin River, one of the forks of the Missouri river that rises in Yellowstone Park. The Gallatin river, Jefferson river, and Madison river all merge at the town of Three Forks to form the Missouri River. Lewis and Clark named the rivers on their famous expedition to this part of the world in 1805.



There are approximately 1,682,048 acres(2,500 square miles) in Gallatin County including over 16,500 acres in surface water. Approximately 800,000 acres in Gallatin County are owned by the public and managed by several local and national agencies including the Bureau of Land Management, U.S. Forest Service, National Park Service, Montana Fish Wildlife & Parks, Montana Department of Transportation, Department of Natural Resources & Conservation and various local governments. The U.S. Forest Service is the largest land holder in Gallatin

County, currently managing over 665,000 acres. In addition to the Forest Service, various state departments manage approximately 61,000 acres. The Bureau of Land Management holds just over 9,000 acres and an additional 1,600 acres belongs to local governments. On the southern edge of Gallatin County is Yellowstone National Park. Yellowstone National Park is one of the world’s primary wildlife preserves and has the greatest concentration of geysers and hot springs in America. Yellowstone National Park is 2,219,789 acres in size(Larger than Rhode Island and Delaware combined). Over 97,600 acres of Yellowstone National Park is located within Gallatin County.

LUXURY REAL ESTATE EXPERT

Delger Real Estate sold over \$155 Million in Real Estate in 2016-2023. Recognized experts in Internet Marketing and Technology, Delger Real Estate are able to generate maximum exposure for their real estate listings. The result: according to ListHub, Delger Real Estate listings outperform 98% of the market. We encourage you to contact Craig to learn more about real estate in Bozeman and the surrounding areas.

POWERED BY INTELLIGENT MARKETING, PROPRIETARY TECHNOLOGY, AND LOCAL EXPERTISE



Craig Delger
BROKER / OWNER
406.581.7504
craigdelger@gmail.com

v1.01-2026-02-03