

DELGER

— REAL ESTATE —

BOZEMAN MONTANA



Craig Delger
BROKER / OWNER
406.581.7504

THIS BROCHURE PROVIDED BY CRAIG DELGER - LUXURY REAL ESTATE EXPERT

Powered by Data, Technology, and Local Expertise



557 St Andrews, Bozeman MT 59715

\$1,995,000

Acres: ± 0.59

MLS#: 408754

DELGER
— REAL ESTATE —
BOZEMAN MONTANA

DelgerRealEstate.com

MLS
Information deemed reliable,
but not guaranteed

INTRODUCTION

Start 2026 strong with a rare opportunity to live beautifully while your home works for you. This exceptional luxury residence includes a high-performing ADU generating up to \$7,100 per month, offering a powerful combination of lifestyle and income. Set in the scenic foothills of the Bridger Mountains, just north of Bridger Creek Golf Course, 557 St. Andrews Drive captures the essence of Bozeman living—privacy, convenience, and sweeping views of the Bridger, Gallatin, and Spanish Peaks. With nearly 5,700 square feet of thoughtfully designed space, this custom home offers 6 bedrooms and 4.5 bathrooms, including a private third-level guest suite currently operating as a successful short-term rental. Ideal for visitors or income generation, the guest quarters are accessed through a shared oversized mudroom, providing separation without sacrificing ease of use. The main level is light-filled and inviting, featuring soaring ceilings, oversized windows, and an open-concept layout designed for both everyday living and entertaining. The showpiece kitchen is outfitted with Monteriors quartz countertops, gold and white Café appliances, and a refined aesthetic curated by Sanctuary Interior Design—complete with designer lighting, wallpaper, and hand-selected furnishings. A formal dining room, dedicated office, expansive entertaining deck, and a serene primary suite with dual walk-in closets and a spa-like en suite complete this level. A striking cantilevered staircase with glass balustrades leads to the lower level, where you'll find a second living area, three additional bedrooms, two full bathrooms, and a flexible space ideal for a gym, playroom, or creative studio. Outside, unwind in the hot tub while soaking in panoramic mountain views. Additional features include a three-car attached garage, dual water heaters, generous storage, and quality craftsmanship throughout. Just minutes from Downtown Bozeman, Bridger Mountain trails, and year-round outdoor recreation, this home seamlessly blends refined design, income potential, and Montana's natural beauty.



FEATURES

Status:	Active	Year Built:	2021
Type:	Residential	Beds:	6
Sub Type:	SingleFamilyResidence	Baths:	5
Acres:	± 0.59	Appliances:	Dryer, Dishwasher, Disposal, Range, Refrigerator, Washer
View:	Mountains, Valley, TreesWoods	Heating/Cooling:	ForcedAir RadiantFloor CentralAir
Listing Date:	2026-02-18		
Listing Agent:	Katharine Hamilton of REAL Broker		

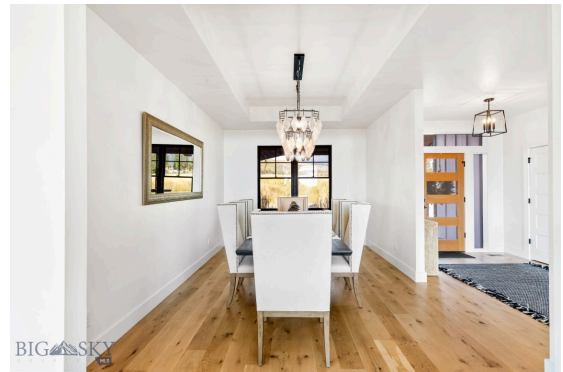
LOCATION



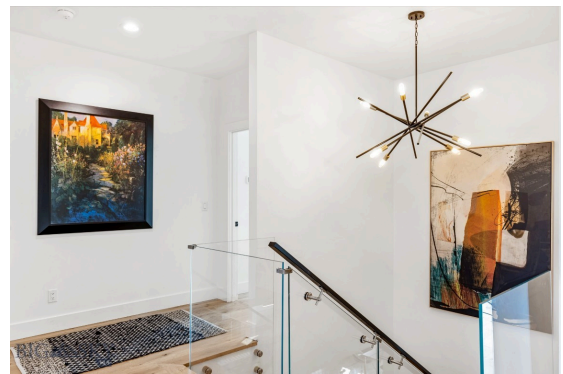
Address: 557 St Andrews, Bozeman MT 59715

PHOTOS

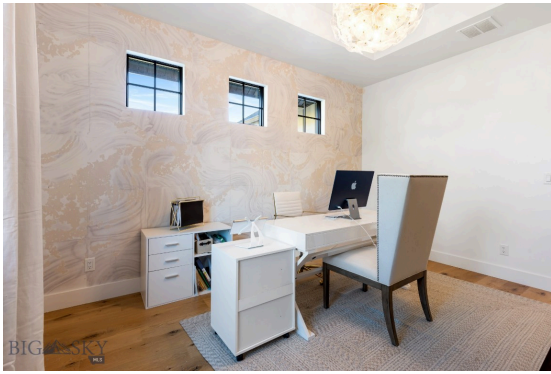


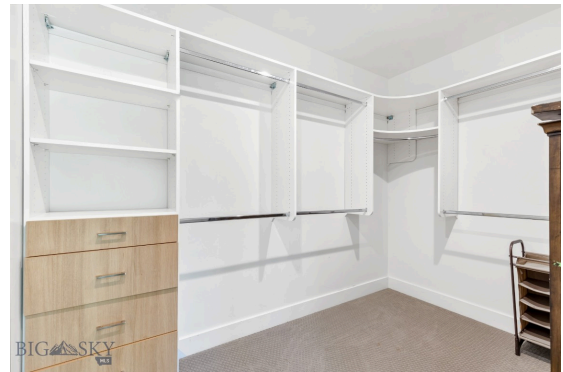














BOZEMAN LIFESTYLE™



Bozeman lifestyle is considered one of the most appealing in the West. Bozeman is routinely ranked as one of the best places to live, best places to retire, best place to raise a kid, best place to visit, best ski town, and best college town. Big Sky Resort is also frequently recognized as one of the world's best ski resorts, most affordable ski resort, and best ski resort for families.

Bozeman is known for its friendly people, sense of community, excellent schools and quality of life. The town has a western charm and a relaxed attitude. The Bozeman Quality Of Life index rates very well due to access to Outdoor Recreation, Amusement, Culture, Education, Medical, Religion, Restaurants and Weather. Bozeman has the cultural amenities of a local symphony and ballet, an energetic downtown restaurant and art scene, and the vibrancy of a college community. Located 16 miles north of Bozeman in the Bridger Canyon area is Bridger Bowl, a home-grown, nonprofit community ski area operating since 1955. Big Sky Resort is less than an hour away and is also frequently recognized as one of the world's best ski resorts, most affordable ski resort, and best ski resort for families.

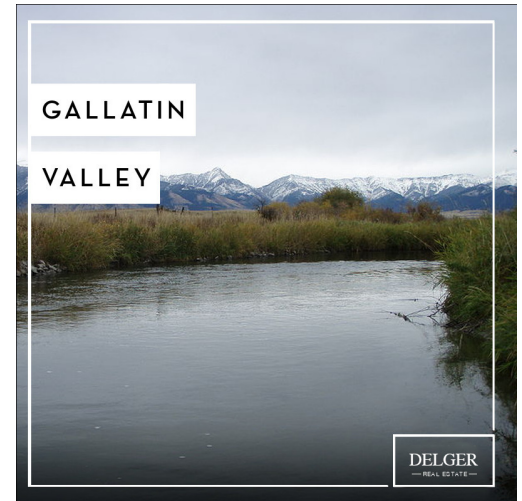
When it comes to outdoor recreation Bozeman is surrounded by 6 different mountain ranges, which offer vast winter and summer recreational opportunities.

A world class destination for fly fishing, Bozeman is home to the world's most famous Blue Ribbon fly fishing rivers, spring creeks and lakes on Earth. The Yellowstone, Madison, Gallatin, Jefferson, Beaverhead, and Missouri rivers are all nearby.

Bozeman has 60 miles of "Main Street To Mountains" trail system in town, surrounded by 6.9 million acres of public land.

GALLATIN COUNTY

Located in a sweeping valley in the heart of the Rocky Mountains, Gallatin County is the most populated and fastest growing county in scenic southwest Montana. Gallatin Valley has a rich history. Native Americans referred to this area as the "Valley of Flowers". The name seems appropriate because of the great variety of wild flowers found on the mountainsides as well as in the valley. Gallatin Valley derives its name from the Gallatin River, one of the forks of the Missouri river that rises in Yellowstone Park. The Gallatin river, Jefferson river, and Madison river all merge at the town of Three Forks to form the Missouri River. Lewis and Clark named the rivers on their famous expedition to this part of the world in 1805.



There are approximately 1,682,048 acres (2,500 square miles) in Gallatin County including over 16,500 acres in surface water. Approximately 800,000 acres in Gallatin County are owned by the public and managed by several local and national agencies including the Bureau of Land Management, U.S. Forest Service, National Park Service, Montana Fish Wildlife & Parks, Montana Department of Transportation, Department of Natural Resources & Conservation and various local governments. The U.S. Forest Service is the largest land holder in Gallatin

County, currently managing over 665,000 acres. In addition to the Forest Service, various state departments manage approximately 61,000 acres. The Bureau of Land Management holds just over 9,000 acres and an additional 1,600 acres belongs to local governments. On the southern edge of Gallatin County is Yellowstone National Park. Yellowstone National Park is one of the world's primary wildlife preserves and has the greatest concentration of geysers and hot springs in America. Yellowstone National Park is 2,219,789 acres in size (Larger than Rhode Island and Delaware combined). Over 97,600 acres of Yellowstone National Park is located within Gallatin County.

LUXURY REAL ESTATE EXPERT

Delger Real Estate sold over \$155 Million in Real Estate in 2016-2023. Recognized experts in Internet Marketing and Technology, Delger Real Estate are able to generate maximum exposure for their real estate listings. The result: according to ListHub, Delger Real Estate listings outperform 98% of the market. We encourage you to contact Craig to learn more about real estate in Bozeman and the surrounding areas.

*POWERED BY INTELLIGENT MARKETING, PROPRIETARY TECHNOLOGY, AND
LOCAL EXPERTISE*



Craig Delger
BROKER / OWNER
406.581.7504
craigdelger@gmail.com

v1.01-2026-02-19