

DELGER

— REAL ESTATE —

BOZEMAN MONTANA



Craig Delger
BROKER / OWNER
406.581.7504

THIS BROCHURE PROVIDED BY CRAIG DELGER - LUXURY REAL ESTATE EXPERT

Powered by Data, Technology, and Local Expertise



235 Bridger Vale Drive, Bozeman MT 59715

\$1,680,000

Acres: ± 0.094

MLS#: 408869

INTRODUCTION

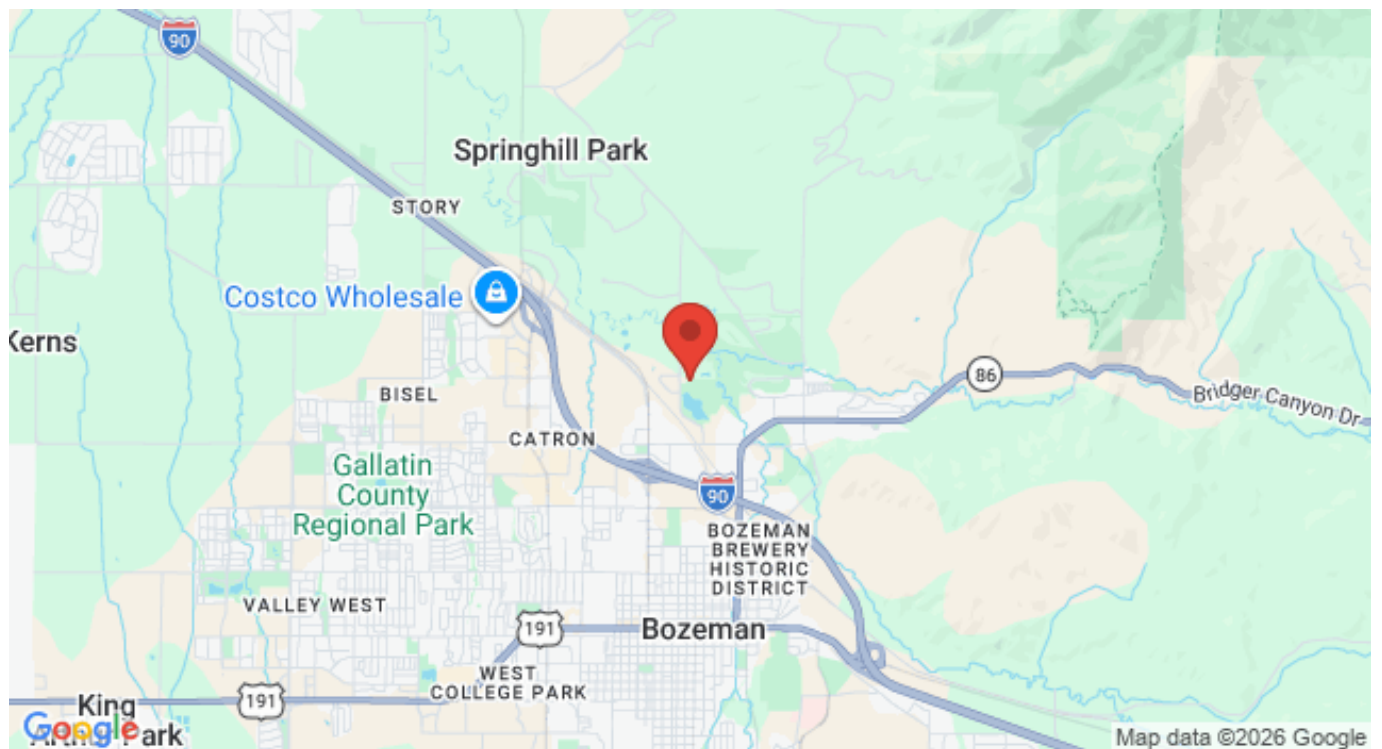
Framed by open green space with protected Bridger Mountain views, this modern 4-bedroom, end-unit townhome offers rare unobstructed Montana views and natural light just minutes from downtown Bozeman. Glen Lake Rotary Park sits directly across the street, offering a scenic lake for summer swimming and winter ice fishing, along with picnic tables and expansive open space. The ground level features an oversized two-car garage, a flexible office suite or fourth bedroom, a full bath, and a welcoming entry. The second floor opens to a bright, contemporary living space where expansive glass sliders frame the mountains and create seamless indoor-outdoor flow. The kitchen is designed for both everyday function and entertaining, anchored by a waterfall quartz island, 36-inch gas range, walk-in pantry, and clean, modern finishes. Upstairs, a dedicated laundry room, additional en-suite bedroom, and a spacious primary suite provide separation and privacy. The primary retreat includes a gas fireplace and a well-appointed bath, creating a comfortable space to unwind. Multiple balconies extend the living experience outdoors, capturing views of the surrounding open space and mountains. Located in Bridger Vale with REMU zoning, the property also allows flexibility for certain live/work opportunities. With immediate access to trails, open space at your doorstep, and downtown Bozeman just minutes away, this residence offers a balanced blend of location, design, and long-term view protection.



FEATURES

Status:	Active	Style:	Contemporary, Rustic
Type:	Residential	Year Built:	2022
Sub Type:	Townhouse	Beds:	4
Acres:	± 0.094	Baths:	4
View:	Farmland, Lake, Meadow, Mountains, Pond, Rural, TreesWoods	Appliances:	BuiltInOven, Dryer, Dishwasher, Disposal, Microwave, Range, Refrigerator, Washer
Water Features:	Creek, Lake, Pond, RiverFront	Heating/Cooling:	ForcedAir SpaceHeater CentralAir
Listing Date:	2026-02-25		
Listing Agent:	Valerie Johnson of PureWest Real Estate Bozeman		

LOCATION



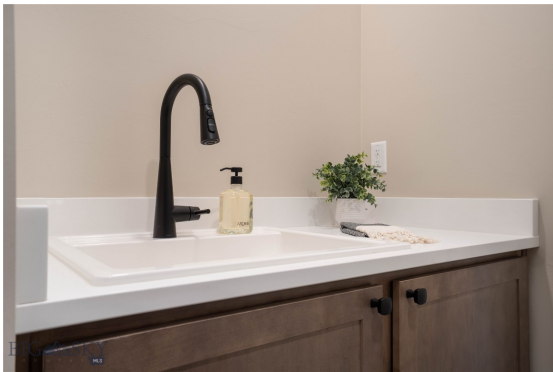
Address: 235 Bridger Vale Drive, Bozeman MT 59715

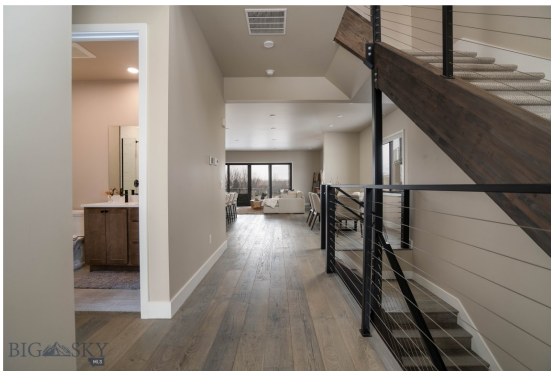
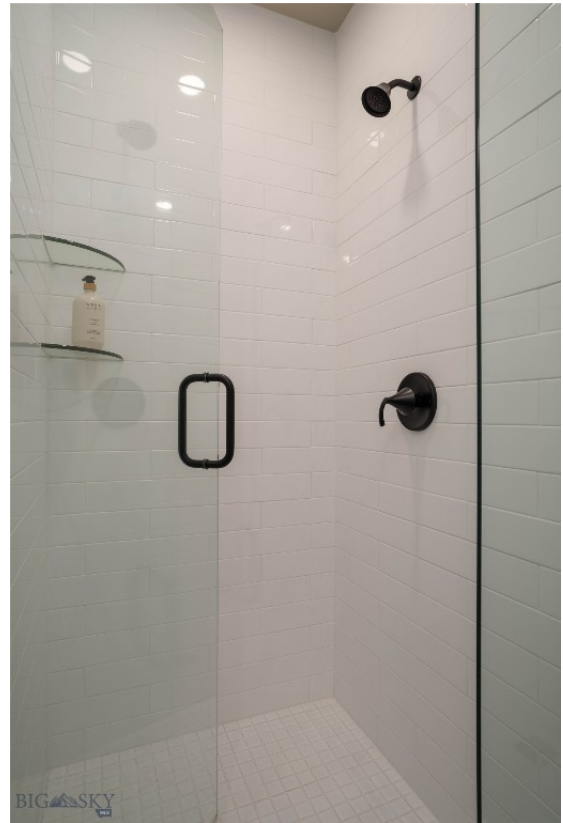
PHOTOS





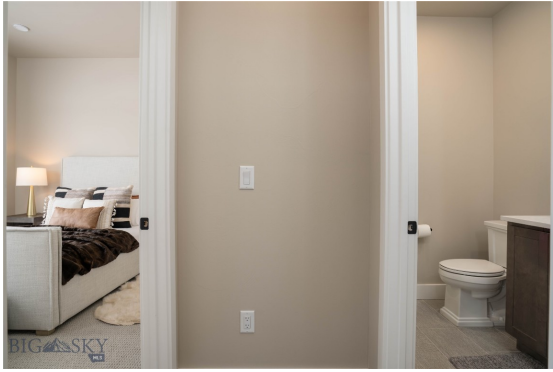












BOZEMAN LIFESTYLE™



Bozeman lifestyle is considered one of the most appealing in the West. Bozeman is routinely ranked as one of the best places to live, best places to retire, best place to raise a kid, best place to visit, best ski town, and best college town. Big Sky Resort is also frequently recognized as one of the world's best ski resorts, most affordable ski resort, and best ski resort for families.

Bozeman is known for its friendly people, sense of community, excellent schools and quality of life. The town has a western charm and a relaxed attitude. The Bozeman Quality Of Life index rates very well due to access to Outdoor Recreation, Amusement, Culture, Education, Medical, Religion, Restaurants and Weather. Bozeman has the cultural amenities of a local symphony and ballet, an energetic downtown restaurant and art scene, and the vibrancy of a college community. Located 16 miles north of Bozeman in the Bridger Canyon area is Bridger Bowl, a home-grown, nonprofit community ski area operating since 1955. Big Sky Resort is less than an hour away and is also frequently recognized as one of the world's best ski resorts, most affordable ski resort, and best ski resort for families.

When it comes to outdoor recreation Bozeman is surrounded by 6 different mountain ranges, which offer vast winter and summer recreational opportunities.

A world class destination for fly fishing, Bozeman is home to the world's most famous Blue Ribbon fly fishing rivers, spring creeks and lakes on Earth. The Yellowstone, Madison, Gallatin, Jefferson, Beaverhead, and Missouri rivers are all nearby.

Bozeman has 60 miles of "Main Street To Mountains" trail system in town, surrounded by 6.9 million acres of public land.

GALLATIN COUNTY

Located in a sweeping valley in the heart of the Rocky Mountains, Gallatin County is the most populated and fastest growing county in scenic southwest Montana. Gallatin Valley has a rich history. Native Americans referred to this area as the “Valley of Flowers”. The name seems appropriate because of the great variety of wild flowers found on the mountainsides as well as in the valley. Gallatin Valley derives its name from the Gallatin River, one of the forks of the Missouri river that rises in Yellowstone Park. The Gallatin river, Jefferson river, and Madison river all merge at the town of Three Forks to form the Missouri River. Lewis and Clark named the rivers on their famous expedition to this part of the world in 1805.



There are approximately 1,682,048 acres (2,500 square miles) in Gallatin County including over 16,500 acres in surface water. Approximately 800,000 acres in Gallatin County are owned by the public and managed by several local and national agencies including the Bureau of Land Management, U.S. Forest Service, National Park Service, Montana Fish Wildlife & Parks, Montana Department of Transportation, Department of Natural Resources & Conservation and various local governments. The U.S. Forest Service is the largest land holder in Gallatin

County, currently managing over 665,000 acres. In addition to the Forest Service, various state departments manage approximately 61,000 acres. The Bureau of Land Management holds just over 9,000 acres and an additional 1,600 acres belongs to local governments. On the southern edge of Gallatin County is Yellowstone National Park. Yellowstone National Park is one of the world’s primary wildlife preserves and has the greatest concentration of geysers and hot springs in America. Yellowstone National Park is 2,219,789 acres in size (Larger than Rhode Island and Delaware combined). Over 97,600 acres of Yellowstone National Park is located within Gallatin County.

LUXURY REAL ESTATE EXPERT

Delger Real Estate sold over \$155 Million in Real Estate in 2016-2023. Recognized experts in Internet Marketing and Technology, Delger Real Estate are able to generate maximum exposure for their real estate listings. The result: according to ListHub, Delger Real Estate listings outperform 98% of the market. We encourage you to contact Craig to learn more about real estate in Bozeman and the surrounding areas.

POWERED BY INTELLIGENT MARKETING, PROPRIETARY TECHNOLOGY, AND LOCAL EXPERTISE



Craig Delger
BROKER / OWNER
406.581.7504
craigdelger@gmail.com

v1.01-2026-04-30