

DELGER

— REAL ESTATE —

BOZEMAN MONTANA



Craig Delger
BROKER / OWNER
406.581.7504

THIS BROCHURE PROVIDED BY CRAIG DELGER - LUXURY REAL ESTATE EXPERT

Powered by Data, Technology, and Local Expertise



276 Creebank Loop, Bozeman MT 59718

\$1,425,000
Acres: ± 0.2252
MLS#: 409286

INTRODUCTION

Welcome to this thoughtfully designed new construction home in Creekside Meadows, offering 3,228 square feet of well-planned living space, a versatile layout, and elevated finishes throughout. The main level offers a bright, open layout designed for both everyday living and entertaining. The kitchen is a true focal point, featuring high end appliances, a six-burner gas range with a range hood, a beverage center, a large island, walk-in pantry, and under-cabinet lighting. Flowing seamlessly into the dining area, you'll find a grand two-story living room, where eight oversized windows wrap the space just beside the fireplace, creating a breathtaking, light-filled setting that feels almost outdoors. Whether you're watching the snowfall over the mountains or cows grazing in the distance, the views become part of everyday living. Sliding glass doors open to a covered patio, creating an effortless indoor-outdoor connection. The primary suite is privately located on the main level and thoughtfully designed with a freestanding soaking tub set against a beautiful wet wall feature, a walk-in tile shower, dual vanities, heated flooring, and a large walk-in closet. Just off the suite, a private patio with a custom screen fence adds an extra layer of comfort and privacy. A dedicated office or fourth bedroom, full bath, and a well-designed mudroom with a built-in bench and cubby storage complete the main level. Upstairs, you'll find two additional bedrooms, a full bathroom, and a spacious flex area perfect for a second living room, media space, or playroom along with a dedicated study or craft room with a built-in desk. The home offers an oversized two-car garage along with an additional single-car bay, providing plenty of room for vehicles, gear, and storage. Additional highlights include central A/C and a fully fenced and thoughtfully landscaped yard. Located in the highly sought-after Monforton School district and just minutes from all that Bozeman has to offer, this home also captures incredible mountain views in every direction bringing together convenience, space, and the best of Montana living.



FEATURES

Status:	Active
Type:	Residential
Sub Type:	SingleFamilyResidence
Acres:	± 0.2252
View:	Lake, Meadow, Mountains, Pond, TreesWoods
Water Features:	None
Listing Date:	2026-03-31
Listing Agent:	Kelsey Renevier of Coldwell Banker Distinctive Pr

Style:	Custom
Year Built:	2026
Beds:	4
Baths:	3
Appliances:	Dishwasher, Disposal, Range, Refrigerator
Heating/Cooling:	ForcedAir NaturalGas RadiantFloor CentralAir, CeilingFans

LOCATION



Address: 276 Creekbank Loop, Bozeman MT 59718

PHOTOS





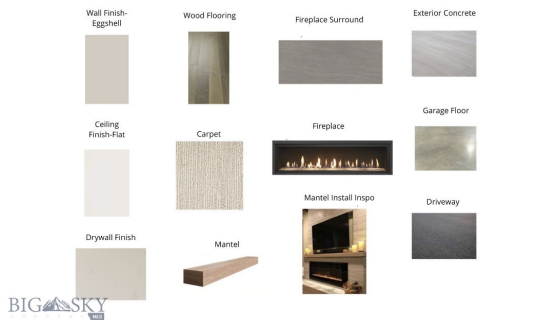
FLOOR PLAN - MAIN LEVEL



FLOOR PLAN - UPPER LEVEL



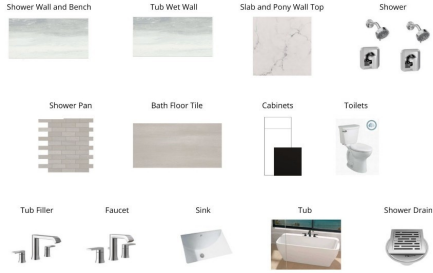
INTERIOR FINISHES



KITCHEN FINISHES



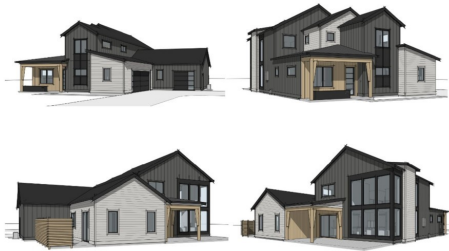
MASTER BATHROOM FINISHES



MUDROOM FINISHES



EXTERIOR ELEVATIONS



BOZEMAN LIFESTYLE™



Bozeman lifestyle is considered one of the most appealing in the West. Bozeman is routinely ranked as one of the best places to live, best places to retire, best place to raise a kid, best place to visit, best ski town, and best college town. Big Sky Resort is also frequently recognized as one of the world's best ski resorts, most affordable ski resort, and best ski resort for families.

Bozeman is known for its friendly people, sense of community, excellent schools and quality of life. The town has a western charm and a relaxed attitude. The Bozeman Quality Of Life index rates very well due to access to Outdoor Recreation, Amusement, Culture, Education, Medical, Religion, Restaurants and Weather. Bozeman has the cultural amenities of a local symphony and ballet, an energetic downtown restaurant and art scene, and the vibrancy of a college community. Located 16 miles north of Bozeman in the Bridger Canyon area is Bridger Bowl, a home-grown, nonprofit community ski area operating since 1955. Big Sky Resort is less than an hour away and is also frequently recognized as one of the world's best ski resorts, most affordable ski resort, and best ski resort for families.

When it comes to outdoor recreation Bozeman is surrounded by 6 different mountain ranges, which offer vast winter and summer recreational opportunities.

A world class destination for fly fishing, Bozeman is home to the world's most famous Blue Ribbon fly fishing rivers, spring creeks and lakes on Earth. The Yellowstone, Madison, Gallatin, Jefferson, Beaverhead, and Missouri rivers are all nearby.

Bozeman has 60 miles of "Main Street To Mountains" trail system in town, surrounded by 6.9 million acres of public land.

GALLATIN COUNTY

Located in a sweeping valley in the heart of the Rocky Mountains, Gallatin County is the most populated and fastest growing county in scenic southwest Montana. Gallatin Valley has a rich history. Native Americans referred to this area as the "Valley of Flowers". The name seems appropriate because of the great variety of wild flowers found on the mountainsides as well as in the valley. Gallatin Valley derives its name from the Gallatin River, one of the forks of the Missouri river that rises in Yellowstone Park. The Gallatin river, Jefferson river, and Madison river all merge at the town of Three Forks to form the Missouri River. Lewis and Clark named the rivers on their famous expedition to this part of the world in 1805.



There are approximately 1,682,048 acres (2,500 square miles) in Gallatin County including over 16,500 acres in surface water. Approximately 800,000 acres in Gallatin County are owned by the public and managed by several local and national agencies including the Bureau of Land Management, U.S. Forest Service, National Park Service, Montana Fish Wildlife & Parks, Montana Department of Transportation, Department of Natural Resources & Conservation and various local governments. The U.S. Forest Service is the largest land holder in Gallatin

County, currently managing over 665,000 acres. In addition to the Forest Service, various state departments manage approximately 61,000 acres. The Bureau of Land Management holds just over 9,000 acres and an additional 1,600 acres belongs to local governments. On the southern edge of Gallatin County is Yellowstone National Park. Yellowstone National Park is one of the world's primary wildlife preserves and has the greatest concentration of geysers and hot springs in America. Yellowstone National Park is 2,219,789 acres in size (Larger than Rhode Island and Delaware combined). Over 97,600 acres of Yellowstone National Park is located within Gallatin County.

LUXURY REAL ESTATE EXPERT

Delger Real Estate sold over \$155 Million in Real Estate in 2016-2023. Recognized experts in Internet Marketing and Technology, Delger Real Estate are able to generate maximum exposure for their real estate listings. The result: according to ListHub, Delger Real Estate listings outperform 98% of the market. We encourage you to contact Craig to learn more about real estate in Bozeman and the surrounding areas.

POWERED BY INTELLIGENT MARKETING, PROPRIETARY TECHNOLOGY, AND LOCAL EXPERTISE



Craig Delger
BROKER / OWNER
406.581.7504
craigdelger@gmail.com

v1.01-2026-05-30