

# DELGER

— REAL ESTATE —

BOZEMAN MONTANA



Craig Delger  
BROKER / OWNER  
406.581.7504

**THIS BROCHURE PROVIDED BY CRAIG DELGER - BOZEMAN REAL ESTATE EXPERT**

*Powered by Data, Technology, and Local Expertise*



## 2040 Lance Drive #3, Bozeman MT 59718

\$899,000

Acres: ±

MLS#: 410497

# INTRODUCTION

Rarely does a property like this become available in the highly sought-after Lykke Condominiums a 15-unit condominium community thoughtfully designed for both privacy and connection. "Lykke" is a Norwegian word for happiness, joy, and good fortune. Surrounded by generous open space, residents enjoy access to a community garden, walking trails, two fire pit gathering areas, and a nearby park, creating a peaceful, lifestyle-driven setting. This home blends modern Scandinavian design with high-end finishes, featuring stunning Lundhs Real Stone counter tops and backsplash imported from Norway, warm hardwood floors, and a gas fireplace anchoring the main living space. The large sliding glass door opens to an expansive wood deck and access to Lykke's grounds with mature trees and a walking path to the community fire pits, park, and garden. The only shared wall between neighboring units is at the garages, significantly reducing sound transfer and enhancing privacy throughout the main living areas. The main floor primary suite offers convenient, single-level living with a large walk-in closet and well equipped primary bathroom suite with designer tile and large walk-in shower with dual shower heads. Large Euro-style windows with custom window coverings fill the space with natural light. Upstairs, you'll find vaulted ceilings that enhance the sense of space, a large family room perfect for relaxing or entertaining, two well-appointed guest bedrooms, a full guest bath, and a dedicated storage room. Built with energy efficiency in mind, the home includes flash and batt insulation, thermal barrier siding, and solar panels delivering both comfort and long-term savings. The over sized, heated two-car garage is a standout feature, complete with additional storage space and durable commercial-grade flooring. The Lykke Condominiums are truly a hidden gem an architecturally distinctive community that gained national attention when it was featured in Dwell upon its completion in 2021. This is a rare chance to own in one of the areas most unique and thoughtfully designed developments on the south side of town.



## FEATURES

<b>Status:</b>	Contingent	<b>Style:</b>	Contemporary
<b>Type:</b>	Residential	<b>Year Built:</b>	2020
<b>Sub Type:</b>	Condominium	<b>Beds:</b>	3
<b>View:</b>	SouthernExposure	<b>Baths:</b>	3
<b>Listing Date:</b>	2026-04-24	<b>Appliances:</b>	Dishwasher, Disposal, Range, Refrigerator
<b>Listing Agent:</b>	Cory Robinson of Bozeman Real Estate Group	<b>Heating/Cooling:</b>	ForcedAir NaturalGas CentralAir

## LOCATION

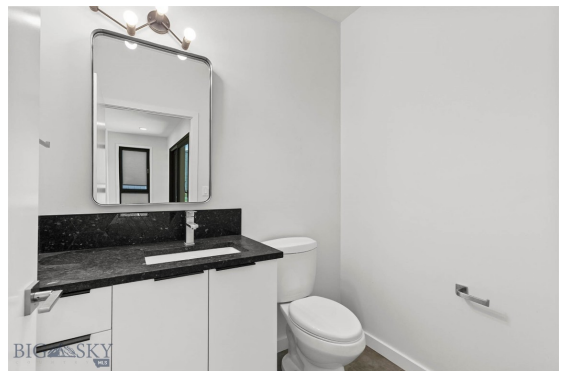


Address: 2040 Lance Drive #3, Bozeman MT 59718

# PHOTOS

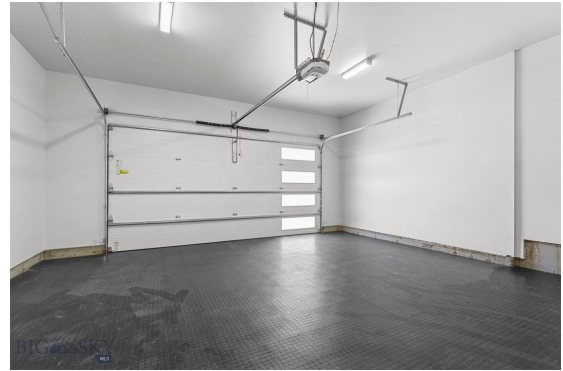












# BOZEMAN LIFESTYLE™



Bozeman lifestyle is considered one of the most appealing in the West. Bozeman is routinely ranked as one of the best places to live, best places to retire, best place to raise a kid, best place to visit, best ski town, and best college town. Big Sky Resort is also frequently recognized as one of the world's best ski resorts, most affordable ski resort, and best ski resort for families.

Bozeman is known for its friendly people, sense of community, excellent schools and quality of life. The town has a western charm and a relaxed attitude. The Bozeman Quality Of Life index rates very well due to access to Outdoor Recreation, Amusement, Culture, Education, Medical, Religion, Restaurants and Weather. Bozeman has the cultural amenities of a local symphony and ballet, an energetic downtown restaurant and art scene, and the vibrancy of a college community. Located 16 miles north of Bozeman in the Bridger Canyon area is Bridger Bowl, a home-grown, nonprofit community ski area operating since 1955. Big Sky Resort is less than an hour away and is also frequently recognized as one of the world's best ski resorts, most affordable ski resort, and best ski resort for families.

When it comes to outdoor recreation Bozeman is surrounded by 6 different mountain ranges, which offer vast winter and summer recreational opportunities.

A world class destination for fly fishing, Bozeman is home to the world's most famous Blue Ribbon fly fishing rivers, spring creeks and lakes on Earth. The Yellowstone, Madison, Gallatin, Jefferson, Beaverhead, and Missouri rivers are all nearby.

Bozeman has 60 miles of "Main Street To Mountains" trail system in town, surrounded by 6.9 million acres of public land.

# GALLATIN COUNTY

Located in a sweeping valley in the heart of the Rocky Mountains, Gallatin County is the most populated and fastest growing county in scenic southwest Montana. Gallatin Valley has a rich history. Native Americans referred to this area as the "Valley of Flowers". The name seems appropriate because of the great variety of wild flowers found on the mountainsides as well as in the valley. Gallatin Valley derives its name from the Gallatin River, one of the forks of the Missouri river that rises in Yellowstone Park. The Gallatin river, Jefferson river, and Madison river all merge at the town of Three Forks to form the Missouri River. Lewis and Clark named the rivers on their famous expedition to this part of the world in 1805.



There are approximately 1,682,048 acres (2,500 square miles) in Gallatin County including over 16,500 acres in surface water. Approximately 800,000 acres in Gallatin County are owned by the public and managed by several local and national agencies including the Bureau of Land Management, U.S. Forest Service, National Park Service, Montana Fish Wildlife & Parks, Montana Department of Transportation, Department of Natural Resources & Conservation and various local governments. The U.S. Forest Service is the largest land holder in Gallatin

County, currently managing over 665,000 acres. In addition to the Forest Service, various state departments manage approximately 61,000 acres. The Bureau of Land Management holds just over 9,000 acres and an additional 1,600 acres belongs to local governments. On the southern edge of Gallatin County is Yellowstone National Park. Yellowstone National Park is one of the world's primary wildlife preserves and has the greatest concentration of geysers and hot springs in America. Yellowstone National Park is 2,219,789 acres in size (Larger than Rhode Island and Delaware combined). Over 97,600 acres of Yellowstone National Park is located within Gallatin County.

# BOZEMAN REAL ESTATE EXPERT

Delger Real Estate sold over \$155 Million in Real Estate in 2016-2023. Recognized experts in Internet Marketing and Technology, Delger Real Estate are able to generate maximum exposure for their real estate listings. The result: according to ListHub, Delger Real Estate listings outperform 98% of the market. We encourage you to contact Craig to learn more about real estate in Bozeman and the surrounding areas.

*POWERED BY INTELLIGENT MARKETING, PROPRIETARY TECHNOLOGY, AND LOCAL EXPERTISE*



**Craig Delger**  
BROKER / OWNER  
406.581.7504  
craigdelger@gmail.com

v1.01-2026-06-26