

DELGER

— REAL ESTATE —

BOZEMAN MONTANA



Craig Delger
BROKER / OWNER
406.581.7504

THIS BROCHURE PROVIDED BY CRAIG DELGER - BELGRADE REAL ESTATE EXPERT

Powered by Data, Technology, and Local Expertise



108 Secretariat Circle, Belgrade MT 59714

\$575,000

Acres: ± 0.2075

MLS#: 410572

DELGER
— REAL ESTATE —
BOZEMAN MONTANA

DelgerRealEstate.com

REALTOR® LISTING SERVICE
MLS 
Information deemed reliable,
but not guaranteed

INTRODUCTION

Welcome to a rare find in the heart of Belgrade Middle School neighborhood where established charm meets a fully updated, move-in ready home with no HOA. Ideally located just steps from schools, this property offers the perfect blend of convenience, flexibility, and modern comfort for both growing and established households. Designed with functionality in mind, the main floor features a bright and inviting primary suite complete with a tiled bath, oversized walk-in closet, and abundant natural light. The updated kitchen is both stylish and practical, showcasing new appliances, concrete countertops, and a rolling butcher block island that makes everyday living and entertaining effortless. A secondary living space near the entry provides the perfect setting for a cozy sitting room or flex area, while an additional upstairs bedroom offers an ideal option for a home office or guest room. The lower level is built for comfort and connection, featuring a spacious living area anchored by a travertine-tiled electric fireplace that adds both warmth and character. Three additional bedrooms are thoughtfully positioned around the space, along with a well-designed bathroom that includes a walk-in tiled shower, modern finishes, cabinetry, folding station, and a stackable washer and dryer blending style with everyday function. Fresh updates throughout, including plush new carpet, give the home a cohesive and inviting feel. Outside, enjoy a fully fenced backyard with mature apple trees, established flower beds ready for your personal touch, and underground sprinklers for easy maintenance. A powered shed provides additional versatility, while the attached two-car garage offers ample space for storage, hobbies, or projects. With nearly every detail updated, a flexible layout, and a location that's hard to beat, this home truly checks all the boxes. Be sure to check out the full video tour here :
<https://youtu.be/J-L5ZQIQqK8>

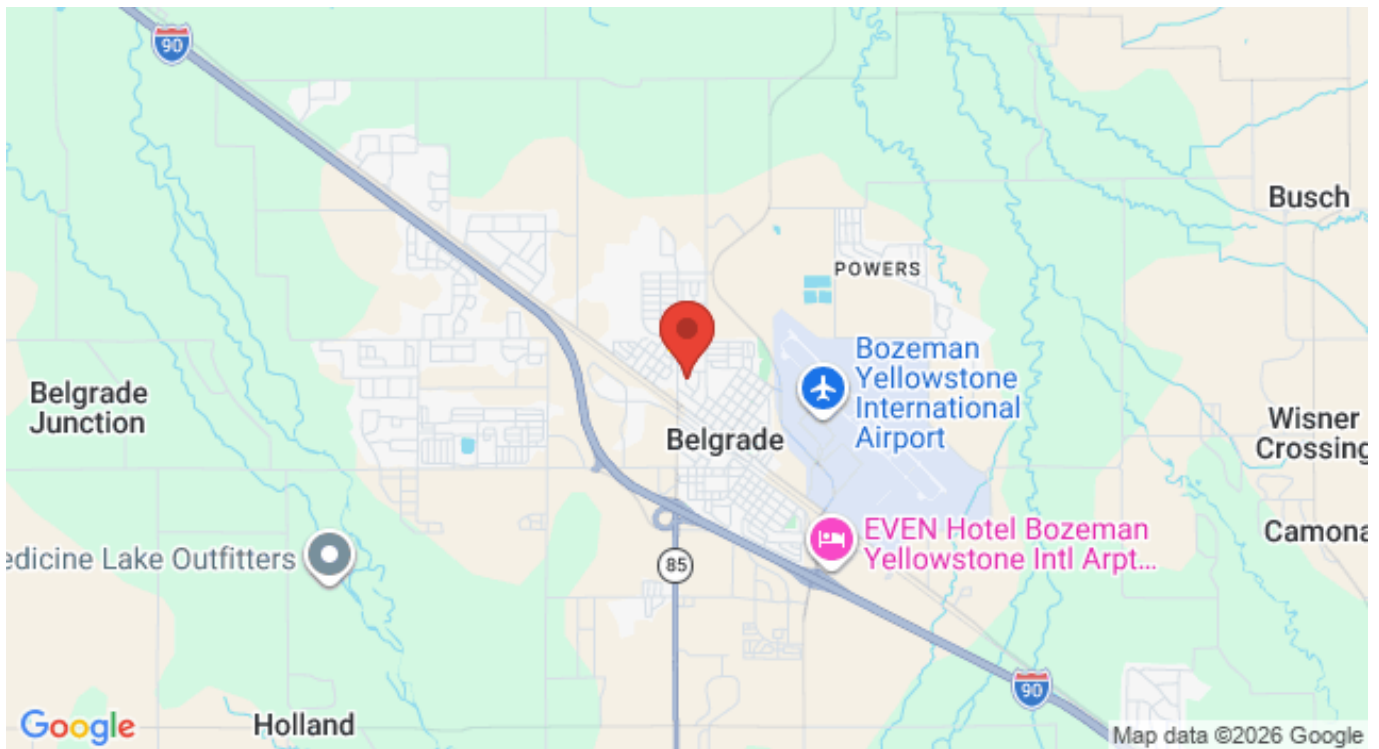


FEATURES

Status:	Active
Type:	Residential
Sub Type:	SingleFamilyResidence
Acres:	± 0.2075
Listing Date:	2026-05-06
Listing Agent:	Melissa Mobley of eXp Realty, LLC

Style:	Ranch
Year Built:	1983
Beds:	5
Baths:	3
Appliances:	Dryer, Dishwasher, Disposal, Range, Refrigerator, Washer
Heating/Cooling:	Baseboard Electric None

LOCATION



Address: 108 Secretariat Circle, Belgrade MT 59714

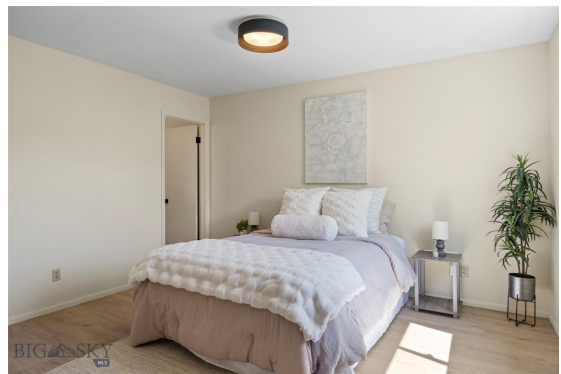
PHOTOS

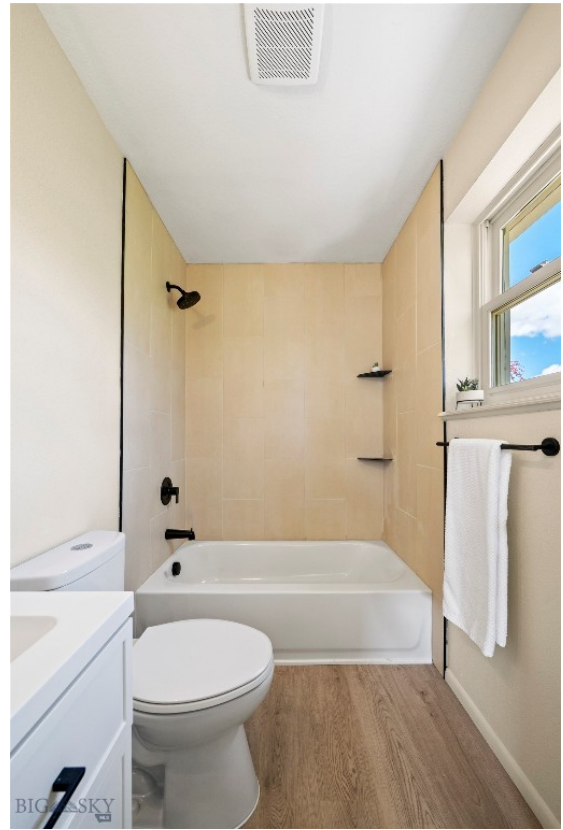


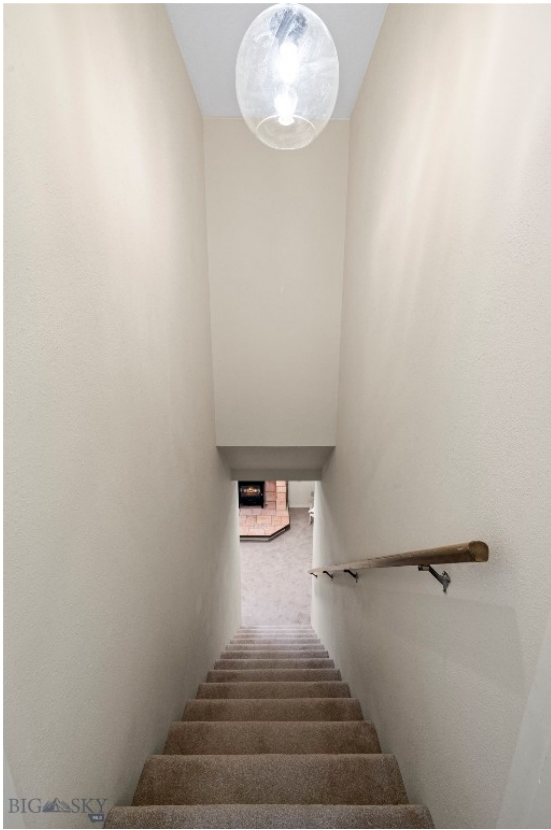












BELGRADE LIFESTYLE



With a population of about 8,000 people, Belgrade has the amenities and services buyers expect for a town of this size. The Belgrade School District includes Elementary Schools, a Middle School, and a High School. Belgrade neighborhoods and surrounding areas are experiencing significant population growth, with numerous new subdivisions under development. Belgrade, Montana is located just 11 miles to the northwest of Bozeman, Montana making it a desirable location. Many Belgrade Homes for sale have views of the mountain ranges and open land surrounding the Gallatin Valley.

Homes in Belgrade offer convenient access to the Bozeman Yellowstone International Airport, and to the Interstate. Belgrade has a small downtown area with grocery stores, restaurants, and shopping. Belgrade is just over 10 minutes from Bozeman's N 19th Ave shopping district which includes stores like Costco, Target, etc.

When it comes to outdoor recreation Belgrade is surrounded by 6 different mountain ranges, which offer vast winter and summer recreational opportunities. Bridger Bowl, a home-grown, nonprofit community ski area operating since 1955 is located 24 miles from Belgrade. Big Sky Resort is 44 miles away and is also frequently recognized as one of the world's best ski resorts, most affordable ski resort, and best ski resort for families.

The world's most famous Blue Ribbon fly fishing rivers (Yellowstone, Madison, Gallatin, Jefferson, Beaverhead, and Missouri rivers) are all nearby making this area a world class destination for fly fishing. Yellowstone National Park (2.2 million acres) is located 90 miles south of Belgrade, Montana.

The median price of a single family home in Belgrade is 30% lower priced than single family homes in Bozeman and appeals to buyers seeking lower priced real estate, yet still want to be close to the amenities of Bozeman.

GALLATIN COUNTY

Located in a sweeping valley in the heart of the Rocky Mountains, Gallatin County is the most populated and fastest growing county in scenic southwest Montana. Gallatin Valley has a rich history. Native Americans referred to this area as the “Valley of Flowers”. The name seems appropriate because of the great variety of wild flowers found on the mountainsides as well as in the valley. Gallatin Valley derives its name from the Gallatin River, one of the forks of the Missouri river that rises in Yellowstone Park. The Gallatin river, Jefferson river, and Madison river all merge at the town of Three Forks to form the Missouri River. Lewis and Clark named the rivers on their famous expedition to this part of the world in 1805.



There are approximately 1,682,048 acres (2,500 square miles) in Gallatin County including over 16,500 acres in surface water. Approximately 800,000 acres in Gallatin County are owned by the public and managed by several local and national agencies including the Bureau of Land Management, U.S. Forest Service, National Park Service, Montana Fish Wildlife & Parks, Montana Department of Transportation, Department of Natural Resources & Conservation and various local governments. The U.S. Forest Service is the largest land holder in Gallatin

County, currently managing over 665,000 acres. In addition to the Forest Service, various state departments manage approximately 61,000 acres. The Bureau of Land Management holds just over 9,000 acres and an additional 1,600 acres belongs to local governments. On the southern edge of Gallatin County is Yellowstone National Park. Yellowstone National Park is one of the world’s primary wildlife preserves and has the greatest concentration of geysers and hot springs in America. Yellowstone National Park is 2,219,789 acres in size (Larger than Rhode Island and Delaware combined). Over 97,600 acres of Yellowstone National Park is located within Gallatin County.

BELGRADE REAL ESTATE EXPERT

Delger Real Estate sold over \$155 Million in Real Estate in 2016-2023. Recognized experts in Internet Marketing and Technology, Delger Real Estate are able to generate maximum exposure for their real estate listings. The result: according to ListHub, Delger Real Estate listings outperform 98% of the market. We encourage you to contact Craig to learn more about real estate in Belgrade and the surrounding areas.

POWERED BY INTELLIGENT MARKETING, PROPRIETARY TECHNOLOGY, AND LOCAL EXPERTISE



Craig Delger
BROKER / OWNER
406.581.7504
craigdelger@gmail.com

v1.01-2026-05-11