

DELGER

— REAL ESTATE —

BOZEMAN MONTANA



Craig Delger
BROKER / OWNER
406.581.7504

THIS BROCHURE PROVIDED BY CRAIG DELGER - BOZEMAN REAL ESTATE EXPERT

Powered by Data, Technology, and Local Expertise



382 Talon Way, Bozeman MT 59718

\$875,000

Acres: ± 0.254

MLS#: 411538

DELGER
— REAL ESTATE —
BOZEMAN MONTANA

DelgerRealEstate.com

REALTOR® LISTING SERVICE
MLS 
Information deemed reliable,
but not guaranteed

INTRODUCTION

Modern Montana living with breathtaking mountain views in the heart of Bozeman. Thoughtfully designed with clean contemporary lines and warm, inviting finishes, this beautifully crafted home offers the ideal blend of style, function, and flexibility. Featuring 3 spacious bedrooms plus an optional 4th bedroom or office, 3 well-appointed bathrooms, and a versatile bonus room, the layout effortlessly adapts to a variety of lifestyles whether you need guest accommodations, a dedicated workspace, media room, or additional living space. The highly sought-after main-floor primary suite offers convenience and privacy, creating an ideal setup for long-term comfort and easy living. Expansive windows throughout the home showcase sweeping mountain views while filling the interior with natural light, creating a seamless connection to Montanas stunning landscape. At the heart of the home, the open-concept kitchen, dining, and living areas were designed for gathering and entertaining. An oversized kitchen island anchors the space, making it perfect for everything from casual mornings to holiday hosting. Step outside to a fully fenced backyard with room to entertain, garden, or simply relax and take in the peaceful Montana setting. Additional features including a cozy gas fireplace, central air conditioning, and a dedicated mudroom/laundry space add comfort and convenience throughout every season. To make this opportunity even more appealing, the seller is offering a credit toward new flooring or closing costs providing flexibility and added value. Spacious, light-filled, and perfectly positioned to capture incredible views, this home offers the Bozeman lifestyle buyers dream about. Schedule your private showing today.

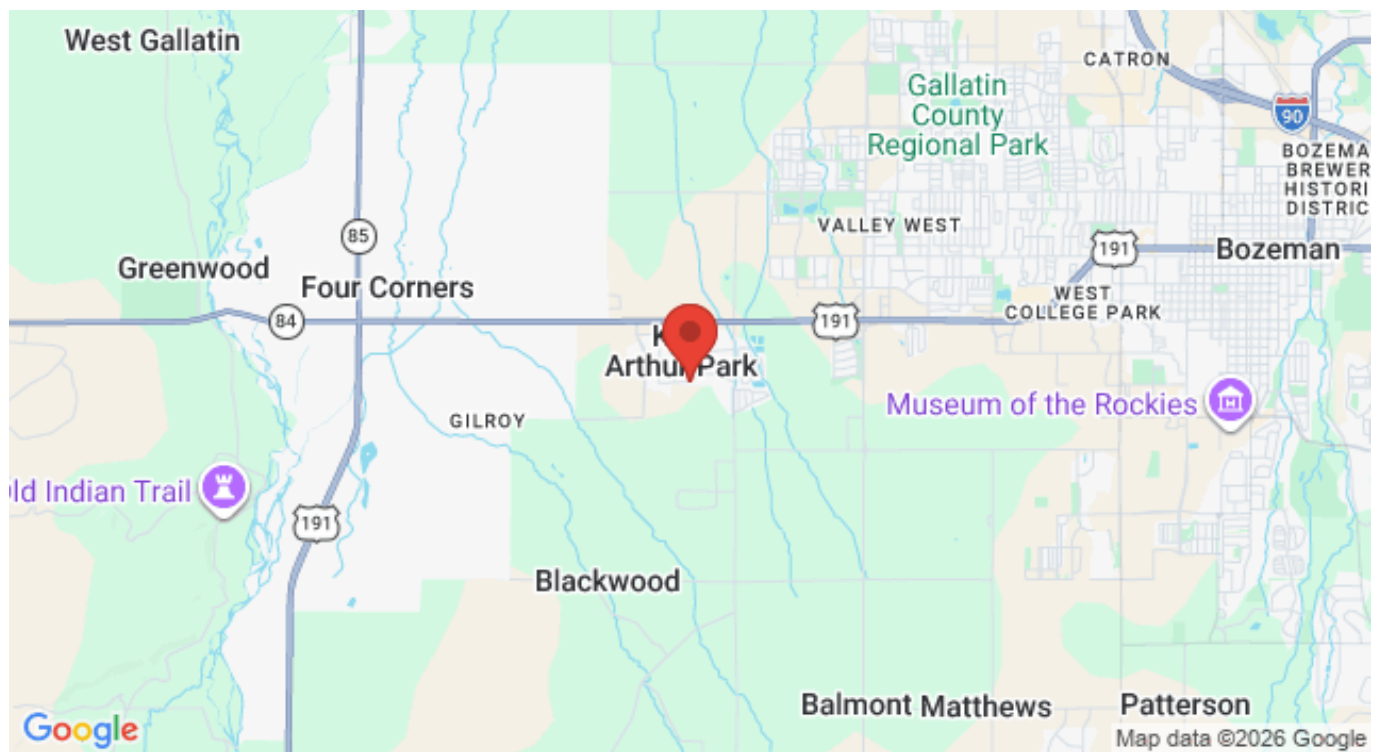


FEATURES

Status:	Active
Type:	Residential
Sub Type:	SingleFamilyResidence
Acres:	± 0.254
View:	Farmland, Mountains
Listing Date:	2026-05-24
Listing Agent:	Jessica Gustafson of Bozeman Real Estate Group

Year Built:	2019
Beds:	3
Baths:	3
Heating/Cooling:	ForcedAir CentralAir

LOCATION



Address: 382 Talon Way, Bozeman MT 59718

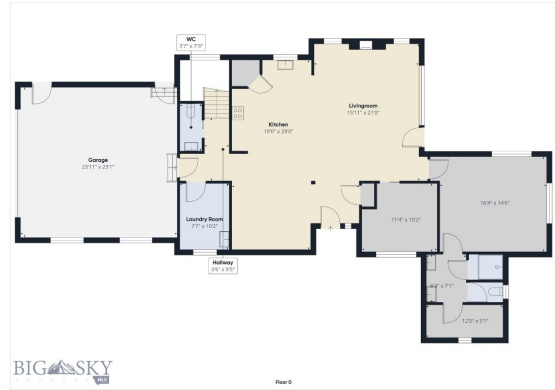
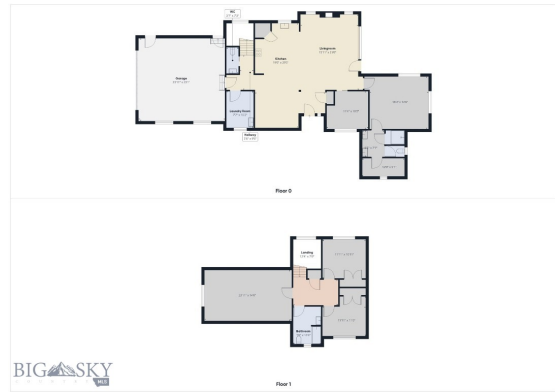
PHOTOS











BOZEMAN LIFESTYLE™



Bozeman lifestyle is considered one of the most appealing in the West. Bozeman is routinely ranked as one of the best places to live, best places to retire, best place to raise a kid, best place to visit, best ski town, and best college town. Big Sky Resort is also frequently recognized as one of the world's best ski resorts, most affordable ski resort, and best ski resort for families.

Bozeman is known for its friendly people, sense of community, excellent schools and quality of life. The town has a western charm and a relaxed attitude. The Bozeman Quality Of Life index rates very well due to access to Outdoor Recreation, Amusement, Culture, Education, Medical, Religion, Restaurants and Weather. Bozeman has the cultural amenities of a local symphony and ballet, an energetic downtown restaurant and art scene, and the vibrancy of a college community. Located 16 miles north of Bozeman in the Bridger Canyon area is Bridger Bowl, a home-grown, nonprofit community ski area operating since 1955. Big Sky Resort is less than an hour away and is also frequently recognized as one of the world's best ski resorts, most affordable ski resort, and best ski resort for families.

When it comes to outdoor recreation Bozeman is surrounded by 6 different mountain ranges, which offer vast winter and summer recreational opportunities.

A world class destination for fly fishing, Bozeman is home to the world's most famous Blue Ribbon fly fishing rivers, spring creeks and lakes on Earth. The Yellowstone, Madison, Gallatin, Jefferson, Beaverhead, and Missouri rivers are all nearby.

Bozeman has 60 miles of "Main Street To Mountains" trail system in town, surrounded by 6.9 million acres of public land.

GALLATIN COUNTY

Located in a sweeping valley in the heart of the Rocky Mountains, Gallatin County is the most populated and fastest growing county in scenic southwest Montana. Gallatin Valley has a rich history. Native Americans referred to this area as the “Valley of Flowers”. The name seems appropriate because of the great variety of wild flowers found on the mountainsides as well as in the valley. Gallatin Valley derives its name from the Gallatin River, one of the forks of the Missouri river that rises in Yellowstone Park. The Gallatin river, Jefferson river, and Madison river all merge at the town of Three Forks to form the Missouri River. Lewis and Clark named the rivers on their famous expedition to this part of the world in 1805.



There are approximately 1,682,048 acres (2,500 square miles) in Gallatin County including over 16,500 acres in surface water. Approximately 800,000 acres in Gallatin County are owned by the public and managed by several local and national agencies including the Bureau of Land Management, U.S. Forest Service, National Park Service, Montana Fish Wildlife & Parks, Montana Department of Transportation, Department of Natural Resources & Conservation and various local governments. The U.S. Forest Service is the largest land holder in Gallatin

County, currently managing over 665,000 acres. In addition to the Forest Service, various state departments manage approximately 61,000 acres. The Bureau of Land Management holds just over 9,000 acres and an additional 1,600 acres belongs to local governments. On the southern edge of Gallatin County is Yellowstone National Park. Yellowstone National Park is one of the world’s primary wildlife preserves and has the greatest concentration of geysers and hot springs in America. Yellowstone National Park is 2,219,789 acres in size (Larger than Rhode Island and Delaware combined). Over 97,600 acres of Yellowstone National Park is located within Gallatin County.

BOZEMAN REAL ESTATE EXPERT

Delger Real Estate sold over \$155 Million in Real Estate in 2016-2023. Recognized experts in Internet Marketing and Technology, Delger Real Estate are able to generate maximum exposure for their real estate listings. The result: according to ListHub, Delger Real Estate listings outperform 98% of the market. We encourage you to contact Craig to learn more about real estate in Bozeman and the surrounding areas.

POWERED BY INTELLIGENT MARKETING, PROPRIETARY TECHNOLOGY, AND LOCAL EXPERTISE



Craig Delger
BROKER / OWNER
406.581.7504
craigdelger@gmail.com

v1.01-2026-06-03