



THIS BROCHURE PROVIDED BY CRAIG DELGER - BOZEMAN REAL ESTATE EXPERT

Powered by Data, Technology, and Local Expertise



704 S 16th, Bozeman MT 59715

\$439,900

Acres: ±

MLS#: 411544

INTRODUCTION

Welcome to 704 S.16th Ave. This 2 bed -1.5 bath condo is just moments from Montana State University. Whether you're heading to class, grabbing coffee, picking up groceries, meeting friends for tacos or pizza, or stopping by the iconic Pickle Barrel, you'll love having so many everyday conveniences right outside your door. Inside, vaulted ceilings create an open and airy feel, while the home's mid-century-inspired character adds warmth and personality with the wood burning fireplace. The thoughtfully designed floor plan offers comfortable living spaces making it an excellent option for students, faculty, investors, or anyone looking to enjoy a low-maintenance Bozeman lifestyle. Step outside onto the private deck overlooking a surprisingly secluded backyard setting, offering a peaceful retreat that's hard to find close to campus, and downtown amenities. It's the perfect spot to enjoy your morning coffee, unwind after class, or take in a quiet Montana evening. Recent updates include a new boiler system, providing added peace of mind for the next owner. The 1 stall garage is heated and insulated and features built in ski and bike storage with a workbench perfect for tuning! Combining architectural charm, practical updates, outdoor living space, and an unbeatable location near Montana State University, this condo presents a rare opportunity to enjoy the best of Bozeman living.



FEATURES

Status:	Active	Style:	SplitFoyer
Type:	Residential	Year Built:	1971
Sub Type:	Condominium	Beds:	2
View:	TreesWoods	Baths:	2
Listing Date:	2026-06-02	Appliances:	Dryer, Dishwasher, Microwave, Range, Washer
Listing Agent:	Terrence O'Neil of Bozeman Brokers	Heating/Cooling:	Baseboard None

LOCATION



Address: 704 S 16th, Bozeman MT 59715

PHOTOS









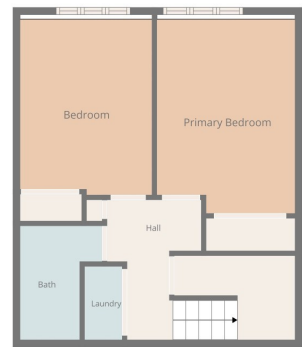






Big Sky REAL ESTATE

Floor Plan Created By Colorize App. Measurements Deemed Highly Reliable But Not Guaranteed.



Big Sky REAL ESTATE

Floor Plan Created By Colorize App. Measurements Deemed Highly Reliable But Not Guaranteed.



Floor Plan Created by CallHome App. Measurements Deemed Highly Reliable But Not Guaranteed.

BOZEMAN LIFESTYLE™



Bozeman lifestyle is considered one of the most appealing in the West. Bozeman is routinely ranked as one of the best places to live, best places to retire, best place to raise a kid, best place to visit, best ski town, and best college town. Big Sky Resort is also frequently recognized as one of the world's best ski resorts, most affordable ski resort, and best ski resort for families.

Bozeman is known for its friendly people, sense of community, excellent schools and quality of life. The town has a western charm and a relaxed attitude. The Bozeman Quality Of Life index rates very well due to access to Outdoor Recreation, Amusement, Culture, Education, Medical, Religion, Restaurants and Weather. Bozeman has the cultural amenities of a local symphony and ballet, an energetic downtown restaurant and art scene, and the vibrancy of a college community. Located 16 miles north of Bozeman in the Bridger Canyon area is Bridger Bowl, a home-grown, nonprofit community ski area operating since 1955. Big Sky Resort is less than an hour away and is also frequently recognized as one of the world's best ski resorts, most affordable ski resort, and best ski resort for families.

When it comes to outdoor recreation Bozeman is surrounded by 6 different mountain ranges, which offer vast winter and summer recreational opportunities.

A world class destination for fly fishing, Bozeman is home to the world's most famous Blue Ribbon fly fishing rivers, spring creeks and lakes on Earth. The Yellowstone, Madison, Gallatin, Jefferson, Beaverhead, and Missouri rivers are all nearby.

Bozeman has 60 miles of "Main Street To Mountains" trail system in town, surrounded by 6.9 million acres of public land.

GALLATIN COUNTY

Located in a sweeping valley in the heart of the Rocky Mountains, Gallatin County is the most populated and fastest growing county in scenic southwest Montana. Gallatin Valley has a rich history. Native Americans referred to this area as the “Valley of Flowers”. The name seems appropriate because of the great variety of wild flowers found on the mountainsides as well as in the valley. Gallatin Valley derives its name from the Gallatin River, one of the forks of the Missouri river that rises in Yellowstone Park. The Gallatin river, Jefferson river, and Madison river all merge at the town of Three Forks to form the Missouri River. Lewis and Clark named the rivers on their famous expedition to this part of the world in 1805.



There are approximately 1,682,048 acres (2,500 square miles) in Gallatin County including over 16,500 acres in surface water. Approximately 800,000 acres in Gallatin County are owned by the public and managed by several local and national agencies including the Bureau of Land Management, U.S. Forest Service, National Park Service, Montana Fish Wildlife & Parks, Montana Department of Transportation, Department of Natural Resources & Conservation and various local governments. The U.S. Forest Service is the largest land holder in Gallatin

County, currently managing over 665,000 acres. In addition to the Forest Service, various state departments manage approximately 61,000 acres. The Bureau of Land Management holds just over 9,000 acres and an additional 1,600 acres belongs to local governments. On the southern edge of Gallatin County is Yellowstone National Park. Yellowstone National Park is one of the world’s primary wildlife preserves and has the greatest concentration of geysers and hot springs in America. Yellowstone National Park is 2,219,789 acres in size (Larger than Rhode Island and Delaware combined). Over 97,600 acres of Yellowstone National Park is located within Gallatin County.

BOZEMAN REAL ESTATE EXPERT

Delger Real Estate sold over \$155 Million in Real Estate in 2016-2023. Recognized experts in Internet Marketing and Technology, Delger Real Estate are able to generate maximum exposure for their real estate listings. The result: according to ListHub, Delger Real Estate listings outperform 98% of the market. We encourage you to contact Craig to learn more about real estate in Bozeman and the surrounding areas.

POWERED BY INTELLIGENT MARKETING, PROPRIETARY TECHNOLOGY, AND LOCAL EXPERTISE



Craig Delger
BROKER / OWNER
406.581.7504
craigdelger@gmail.com

v1.01-2026-06-05