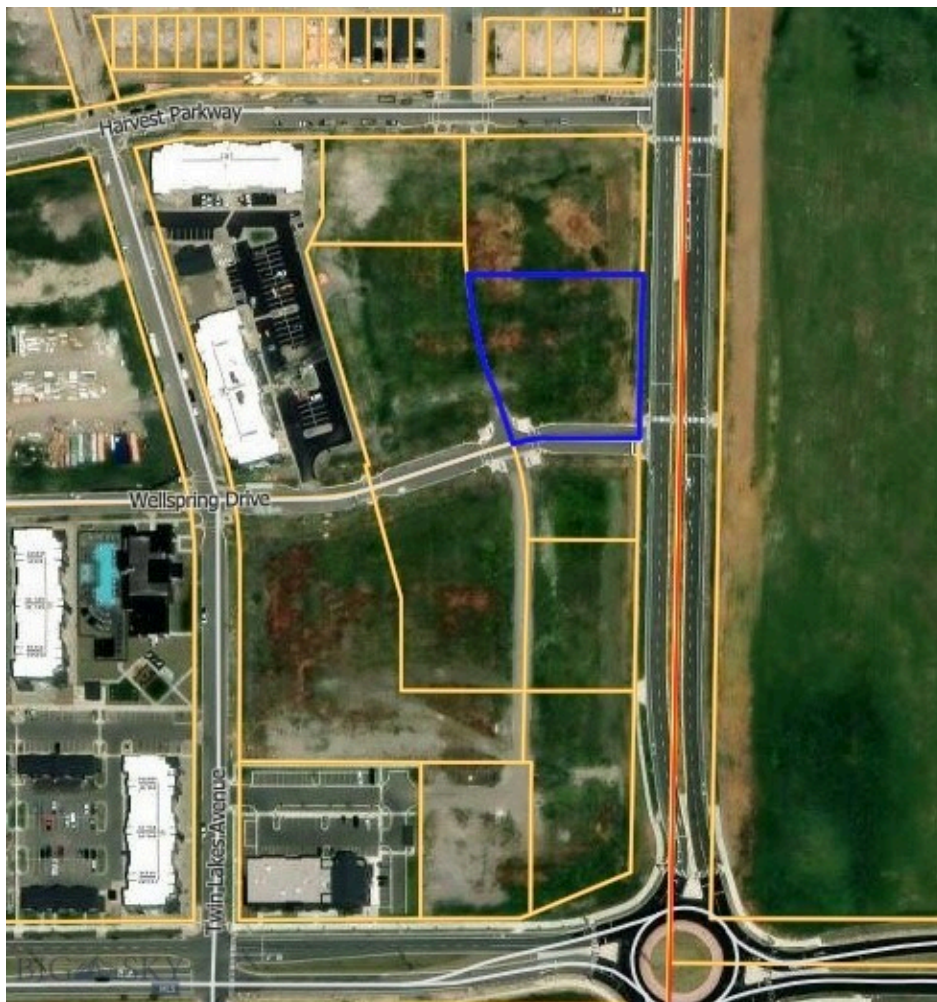




**THIS BROCHURE PROVIDED BY CRAIG DELGER - LUXURY REAL ESTATE EXPERT**

*Powered by Data, Technology, and Local Expertise*



## TBD Dayspring Avenue, Bozeman MT 59718

\$1,497,375

Acres: ± 1.25

MLS#: 412120

# INTRODUCTION

Northwest Crossing Lot 5 (Building D) offers a rare opportunity to acquire a 1.25-acre commercial development site within one of Bozeman's premier master-planned communities. Zoned B2M, the property accommodates a variety of retail, office, restaurant, and mixed-use uses. Positioned within the heart of Northwest Crossing, the site benefits from excellent access, strong visibility, and a built-in customer base from the community's 1,000+ planned front doors. The property enjoys strong co-tenancy with established retailers including Chipotle and Wingstop, along with a growing mix of office, retail, and service-oriented businesses throughout the development. Located adjacent to Gallatin High School and across from Bozeman Sports Park, Lot 5 is situated within one of Bozeman's most dynamic and rapidly expanding commercial corridors.

### BUILDING I (LOT 12)

SUITE #	TENANT	Sq. Ft.
101	Stone Dental Lodge	2,500
102	Wingstop	1,240
103/104	Black Orchid	3,099
105	Available	2,871
201	Available	3,316+ 1,879 Mezzanine
201A	US Senate Office	1,244
202	Shore to Summit Wealth Management	5,144

### BUILDING A (LOT 2)

Available - \$816,750  
.75 Acres

### BUILDING B (LOT 3)

Available - \$1,317,690  
1.21 Acres

### BUILDING C (LOT 4)

Available - \$2,117,016  
1.62 Acres

### BUILDING D (LOT 5)

Available - \$1,497,375  
1.25 Acres

### BUILDING E (LOT 6)

Available - \$2,678,940  
2.46 Acres

### BUILDING F (LOT 7)

SOLD:  
20,500 - 35,000 SF

### BUILDING G (LOT 8)

#	TENANT	Sq. Ft.
101	Lease Out	1,342
102	Lease Out	1,066
103	AVAILABLE	1,197
104	Lease Out	1,136
201	AVAILABLE	1,793
202	AVAILABLE	1,097
203	AVAILABLE	1,644

## COMMERCIAL SITE PLAN

■ Available   
 ■ Lease Out   
 ■ Occupied

### BUILDING H (LOT 9)

Available - \$1,305,493  
.81 Acres

### BUILDING K (LOT 10)

Available - \$1,187,010  
1.03 Acres

### BUILDING J (LOT 11)

Chipotle: 3000 SF

NORTHWEST CROSSING  
BOZEMAN, MT

## FEATURES

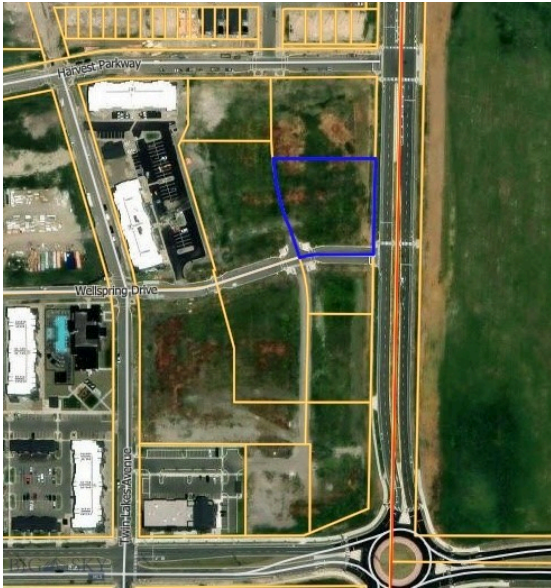
<b>Status:</b>	Active
<b>Type:</b>	Land
<b>Sub Type:</b>	Commercial,UnimprovedLand
<b>Acres:</b>	± 1.25
<b>Listing Date:</b>	2026-06-10
<b>Listing Agent:</b>	Andrew Inches of Charter Realty & Development

## LOCATION



Address: TBD Dayspring Avenue, Bozeman MT 59718

# PHOTOS



BLDG #	TENANT	Sq Ft
101	Stone Dental/Lodge	2,500
102	Wingline	1,240
103/104	Black Orchid	3,099
105	Available	2,871
201	Available	12,648
202	US Secure Office	1,879
203	Stone to Summit Wealth Management	5,541

**BUILDING A (LOT 2)**  
Available - \$855,700  
79 Acres

**BUILDING B (LOT 3)**  
Available - \$1,317,690  
12.5 Acres

**BUILDING C (LOT 4)**  
Available - \$2,137,016  
13.6 Acres

**BUILDING D (LOT 5)**  
Available - \$1,497,375  
1.2 Acres

**BUILDING E (LOT 6)**  
Available - \$2,678,740  
2.6 Acres

**BUILDING F (LOT 7)**  
SOLD - 20,000 - 25,000 SF

**BUILDING G (LOT 8)**

#	TENANT	Sq Ft
101	Timberline	1,793
102	Laser Cut	1,018
103	Available	1,157
201	Available	1,178
202	Available	1,793
203	Available	1,097
204	Available	1,444

**BUILDING H (LOT 9)**  
Available - \$1,305,493  
8.1 Acres

**BUILDING K (LOT 10)**  
Available - \$1,187,010  
1.03 Acres

**BUILDING J (LOT 11)**  
Chapel: 3,000 SF

**COMMERCIAL SITE PLAN** Available Lease Out Occupied

**BOZEMAN MONTANA**







# BOZEMAN LIFESTYLE™



Bozeman lifestyle is considered one of the most appealing in the West. Bozeman is routinely ranked as one of the best places to live, best places to retire, best place to raise a kid, best place to visit, best ski town, and best college town. Big Sky Resort is also frequently recognized as one of the world's best ski resorts, most affordable ski resort, and best ski resort for families.

Bozeman is known for its friendly people, sense of community, excellent schools and quality of life. The town has a western charm and a relaxed attitude. The Bozeman Quality Of Life index rates very well due to access to Outdoor Recreation, Amusement, Culture, Education, Medical, Religion, Restaurants and Weather. Bozeman has the cultural amenities of a local symphony and ballet, an energetic downtown restaurant and art scene, and the vibrancy of a college community. Located 16 miles north of Bozeman in the Bridger Canyon area is Bridger Bowl, a home-grown, nonprofit community ski area operating since 1955. Big Sky Resort is less than an hour away and is also frequently recognized as one of the world's best ski resorts, most affordable ski resort, and best ski resort for families.

When it comes to outdoor recreation Bozeman is surrounded by 6 different mountain ranges, which offer vast winter and summer recreational opportunities.

A world class destination for fly fishing, Bozeman is home to the world's most famous Blue Ribbon fly fishing rivers, spring creeks and lakes on Earth. The Yellowstone, Madison, Gallatin, Jefferson, Beaverhead, and Missouri rivers are all nearby.

Bozeman has 60 miles of "Main Street To Mountains" trail system in town, surrounded by 6.9 million acres of public land.

# GALLATIN COUNTY

Located in a sweeping valley in the heart of the Rocky Mountains, Gallatin County is the most populated and fastest growing county in scenic southwest Montana. Gallatin Valley has a rich history. Native Americans referred to this area as the "Valley of Flowers". The name seems appropriate because of the great variety of wild flowers found on the mountainsides as well as in the valley. Gallatin Valley derives its name from the Gallatin River, one of the forks of the Missouri river that rises in Yellowstone Park. The Gallatin river, Jefferson river, and Madison river all merge at the town of Three Forks to form the Missouri River. Lewis and Clark named the rivers on their famous expedition to this part of the world in 1805.



There are approximately 1,682,048 acres (2,500 square miles) in Gallatin County including over 16,500 acres in surface water. Approximately 800,000 acres in Gallatin County are owned by the public and managed by several local and national agencies including the Bureau of Land Management, U.S. Forest Service, National Park Service, Montana Fish Wildlife & Parks, Montana Department of Transportation, Department of Natural Resources & Conservation and various local governments. The U.S. Forest Service is the largest land holder in Gallatin

County, currently managing over 665,000 acres. In addition to the Forest Service, various state departments manage approximately 61,000 acres. The Bureau of Land Management holds just over 9,000 acres and an additional 1,600 acres belongs to local governments. On the southern edge of Gallatin County is Yellowstone National Park. Yellowstone National Park is one of the world's primary wildlife preserves and has the greatest concentration of geysers and hot springs in America. Yellowstone National Park is 2,219,789 acres in size (larger than Rhode Island and Delaware combined). Over 97,600 acres of Yellowstone National Park is located within Gallatin County.

# LUXURY REAL ESTATE EXPERT

Delger Real Estate sold over \$155 Million in Real Estate in 2016-2023. Recognized experts in Internet Marketing and Technology, Delger Real Estate are able to generate maximum exposure for their real estate listings. The result: according to ListHub, Delger Real Estate listings outperform 98% of the market. We encourage you to contact Craig to learn more about real estate in Bozeman and the surrounding areas.

*POWERED BY INTELLIGENT MARKETING, PROPRIETARY TECHNOLOGY, AND LOCAL EXPERTISE*



**Craig Delger**  
BROKER / OWNER  
406.581.7504  
craigdelger@gmail.com

v1.01-2026-06-11