

# DELGER

— REAL ESTATE —

BOZEMAN MONTANA



Craig Delger  
BROKER / OWNER  
406.581.7504

**THIS BROCHURE PROVIDED BY CRAIG DELGER - LIVINGSTON REAL ESTATE EXPERT**

*Powered by Data, Technology, and Local Expertise*



## 114 S 8th Street, Livingston MT 59047

\$562,500

Acres: ± 0.1607

MLS#: 412282

DELGER  
— REAL ESTATE —  
BOZEMAN MONTANA

DelgerRealEstate.com

REALTOR®  
**MLS**   
Information deemed reliable,  
but not guaranteed

# INTRODUCTION

Step into the timeless charm of this beautifully preserved 1920 home, ideally situated on Livingstons sought-after southwest side. Rich with character and warmth, this inviting residence showcases the craftsmanship of a bygone era, featuring vintage hardwood floors, original doors and hardware, and stunning wood trim that tell the story of more than a century of history. The sunny kitchen is full of charm, complete with a built-in dining nook that beckons for leisurely breakfasts, fresh coffee, and meals with loved ones. The main level offers two comfortable bedrooms and a full bath, while the lower level includes a laundry area, a bath, and a versatile non-conforming bedroom that can serve as guest space, a hobby room, or home office. The welcoming enclosed front porch is the perfect place to enjoy a good book, morning sunshine, or an evening conversation, while the bright sunroom off the primary bedroom offers a peaceful retreat filled with natural light. Inside, a cozy gas fireplace creates an inviting gathering space and provides comfort during Montanas winter months. Outside, a detached single-car garage provides convenient storage, and the fully fenced backyard offers additional off-street parking along with space to relax, garden, or entertain under Montanas big skies. Located just a short stroll from Livingstons vibrant downtown, you'll enjoy easy access to local shops, restaurants, galleries, and year-round community events. With Yellowstone National Park only an hour away and Bozeman and its airport just 30 minutes from your doorstep, this home offers the perfect blend of historic charm, small-town living, and outdoor adventure. In addition to its appeal as a full-time residence, this property offers exciting versatility. Previously operated as a vacation rental, it presents potential opportunities for buyers seeking an investment property, part-time retreat, or primary home with income-producing possibilities. Any or all furniture conveys with an acceptable offer. A rare Livingston treasure, this delightful home is ready to welcome its next chapter.



## FEATURES

<b>Status:</b>	Active
<b>Type:</b>	Residential
<b>Sub Type:</b>	SingleFamilyResidence
<b>Acres:</b>	± 0.1607
<b>Listing Date:</b>	2026-06-19
<b>Listing Agent:</b>	Rick Eisen of Legacy Lands, LLC

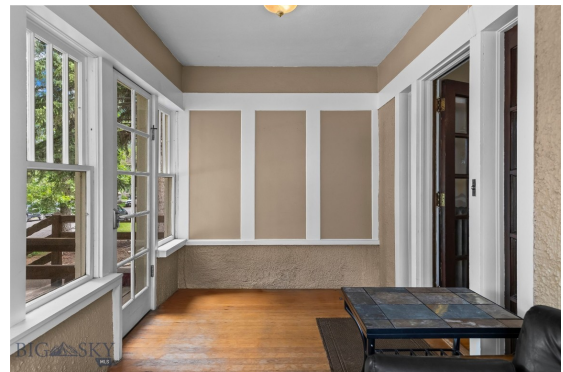
<b>Style:</b>	Bungalow
<b>Year Built:</b>	1920
<b>Beds:</b>	3
<b>Baths:</b>	2
<b>Appliances:</b>	Dryer, Range, Refrigerator, Washer
<b>Heating/Cooling:</b>	Baseboard CeilingFans

## LOCATION



Address: 114 S 8th Street, Livingston MT 59047

# PHOTOS













# LIVINGSTON LIFESTYLE



Livingston, Montana is a historic train town from the late 1880's that has attracted cowboys, ranchers, artists, and the rich and famous who are enamored by the scenery of this area of southwestern Montana. Livingston has been featured in movies like A River Runs Through It, The Horse Whisperer, and numerous TV series and commercials.

Historic Downtown Livingston has lively restaurants and shops, some of which have been around since the late 1800' s. Livingston is known for fly fishing, cross-country skiing, horseback riding, river rafting and numerous museums, art galleries and restaurants.

When it comes to outdoor recreation the town of Livingston is surrounded by four beautiful mountain ranges, and offers the Yellowstone River, Shields River, and numerous stream and spring creeks for an abundance of outdoor activities. Bridger Bowl, a home-grown, nonprofit community ski area operating since 1955 is located 29 miles from Livingston. Big Sky Resort is 68 miles away and is also frequently recognized as one of the world's best ski resorts, most affordable ski resort, and best ski resort for families. Yellowstone National Park(2.2 million acres) is located 50 miles south of Livingston.

With a population of about 7,000 people, Livingston has the amenities and services buyers expect for a town of this size. Livingston is less than 20 minutes from Bozeman. The Livingston School District includes Elementary Schools, a Middle School, and a High School. The median price of a single family home in Livingston is 18% lower priced than single family homes in Bozeman and appeals to buyers seeking a smaller town, yet still want to be close to the amenities of Bozeman.

# PARK COUNTY

Park County, Montana's estimated population is 16,438 with a growth rate of 1.94% in the past year according to the most recent United States census data. Park County, Montana is the 11th largest county in Montana. Park County has a total area of 2,813 square miles (1.8 million acres or 7,290 km<sup>2</sup>), of which 2,803 square miles (7,260 km<sup>2</sup>) is land and 10.4 square miles (27 km<sup>2</sup>) (0.4%) is water. The highest natural point in Montana, Granite Peak at 12,807 feet (3,904m), is located in Park County.



Paradise Valley is a major river valley of the Yellowstone River in southwestern Montana just north of Yellowstone National Park in the southern portion of Park County, Montana. The valley is flanked by the Absaroka Range on the east and the Gallatin Range on the west. The Yellowstone River, one of Montana's Blue Ribbon Trout Rivers, flows through Paradise Valley and is noted for world-class fly fishing in the river and nearby spring creeks such as DePuy Spring Creek. The valley hosts other natural wonders such as several natural hot springs, including Chico Hot Springs near Emigrant, Montana, La Duke Hot Springs near Gardiner, and Hunter's Hot Springs near Livingston. A small part of Yellowstone National Park is located in the extreme southern part of the county.

The northern end of Park County, Montana contains the Shields River Valley. The Shields River is a tributary of the Yellowstone River. It flows west, then south, between the Bridger Range to the west and the Crazy Mountains to the east, past Wilsall and Clyde Park. It joins the Yellowstone approximately 10 mi (16 km) northeast of Livingston, MT.

# LIVINGSTON REAL ESTATE EXPERT

Delger Real Estate sold over \$155 Million in Real Estate in 2016-2023. Recognized experts in Internet Marketing and Technology, Delger Real Estate are able to generate maximum exposure for their real estate listings. The result: according to ListHub, Delger Real Estate listings outperform 98% of the market. We encourage you to contact Craig to learn more about real estate in Livingston and the surrounding areas.

*POWERED BY INTELLIGENT MARKETING, PROPRIETARY TECHNOLOGY, AND LOCAL EXPERTISE*



**Craig Delger**  
BROKER / OWNER  
406.581.7504  
craigdelger@gmail.com

v1.01-2026-06-23