

DELGER

— REAL ESTATE —

BOZEMAN MONTANA



Craig Delger
BROKER / OWNER
406.581.7504

THIS BROCHURE PROVIDED BY CRAIG DELGER - LUXURY REAL ESTATE EXPERT

Powered by Data, Technology, and Local Expertise



7055 Nash Road, Bozeman MT 59715

\$2,699,000

Acres: ± 4.25

MLS#: 412538

INTRODUCTION

This is it - the one you've been waiting for! Jaw dropping views in every direction, NO HOA, and NO Covenants. Less than 10 minutes from town, this gorgeous custom home sits on 4.25 acres. Could it get any better? Freedom to bring your horses, build a barn, or come up with your own idea for this idyllic setting. The entire perimeter has an electric dog fence, so your furry pals will love having the ability to roam here as well! Lives like a single level with ample space for visiting in-laws upstairs. Soaring 22 foot ceilings and stacked stone fireplace offer a cozy, yet understated luxury feel and the Bridger Views shine through the windows surrounding the fireplace. Thoughtful floorplan works perfectly with the primary separated from the secondary bedrooms creating privacy for those who aren't night owls. Circle sawn hardwoods and custom trim work give it that solid, quality feel throughout. Bedrooms are spacious with nice sized closets. Primary closet is a dream come true with custom built-ins galore! Large office features big southern views and a custom built-in Murphy bed for those times when you need more sleeping space. Kitchen features a perfect triangle and the layout is a dream for entertaining. Cute coffee bar/butler's pantry can be tucked away behind a barn door so your daily clutter doesn't reside on your countertops. Current owners upgraded the forced air system to include AC, dual stage heat, and Trane Clean Effects UV and Ionizer air scrubber/purifier. Out back, you'll find an RV/Utility parking pad behind the garage wired for 220v. Speaking of the garage, it's oversized and makes projects easy in the winter or summer months, not to mention plenty of storage for all your gear. The raised bed garden has been thoughtfully installed and has produced boundless crops of herbs, veggies, and flowers over the years. Conveniently, there is a garden shed nearby to house all the accessories needed to tend to both the garden and the yard. Simply put, this one has it all - you are going to love it!



FEATURES

Status:	Active
Type:	Residential
Sub Type:	SingleFamilyResidence
Acres:	± 4.25
View:	Farmland, Mountains
Listing Date:	2026-06-24
Listing Agent:	Courtney Foster of REAL Broker

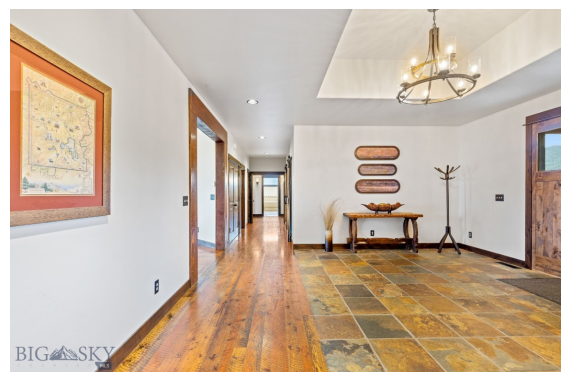
Style:	Craftsman
Year Built:	2008
Beds:	4
Baths:	3
Appliances:	Dryer, Dishwasher, Disposal, Microwave, Range, Refrigerator, Washer
Heating/Cooling:	ForcedAir CentralAir

LOCATION



Address: 7055 Nash Road, Bozeman MT 59715

PHOTOS















BOZEMAN LIFESTYLE™



Bozeman lifestyle is considered one of the most appealing in the West. Bozeman is routinely ranked as one of the best places to live, best places to retire, best place to raise a kid, best place to visit, best ski town, and best college town. Big Sky Resort is also frequently recognized as one of the world's best ski resorts, most affordable ski resort, and best ski resort for families.

Bozeman is known for its friendly people, sense of community, excellent schools and quality of life. The town has a western charm and a relaxed attitude. The Bozeman Quality Of Life index rates very well due to access to Outdoor Recreation, Amusement, Culture, Education, Medical, Religion, Restaurants and Weather. Bozeman has the cultural amenities of a local symphony and ballet, an energetic downtown restaurant and art scene, and the vibrancy of a college community. Located 16 miles north of Bozeman in the Bridger Canyon area is Bridger Bowl, a home-grown, nonprofit community ski area operating since 1955. Big Sky Resort is less than an hour away and is also frequently recognized as one of the world's best ski resorts, most affordable ski resort, and best ski resort for families.

When it comes to outdoor recreation Bozeman is surrounded by 6 different mountain ranges, which offer vast winter and summer recreational opportunities.

A world class destination for fly fishing, Bozeman is home to the world's most famous Blue Ribbon fly fishing rivers, spring creeks and lakes on Earth. The Yellowstone, Madison, Gallatin, Jefferson, Beaverhead, and Missouri rivers are all nearby.

Bozeman has 60 miles of "Main Street To Mountains" trail system in town, surrounded by 6.9 million acres of public land.

GALLATIN COUNTY

Located in a sweeping valley in the heart of the Rocky Mountains, Gallatin County is the most populated and fastest growing county in scenic southwest Montana. Gallatin Valley has a rich history. Native Americans referred to this area as the “Valley of Flowers”. The name seems appropriate because of the great variety of wild flowers found on the mountainsides as well as in the valley. Gallatin Valley derives its name from the Gallatin River, one of the forks of the Missouri river that rises in Yellowstone Park. The Gallatin river, Jefferson river, and Madison river all merge at the town of Three Forks to form the Missouri River. Lewis and Clark named the rivers on their famous expedition to this part of the world in 1805.



There are approximately 1,682,048 acres (2,500 square miles) in Gallatin County including over 16,500 acres in surface water. Approximately 800,000 acres in Gallatin County are owned by the public and managed by several local and national agencies including the Bureau of Land Management, U.S. Forest Service, National Park Service, Montana Fish Wildlife & Parks, Montana Department of Transportation, Department of Natural Resources & Conservation and various local governments. The U.S. Forest Service is the largest land holder in Gallatin

County, currently managing over 665,000 acres. In addition to the Forest Service, various state departments manage approximately 61,000 acres. The Bureau of Land Management holds just over 9,000 acres and an additional 1,600 acres belongs to local governments. On the southern edge of Gallatin County is Yellowstone National Park. Yellowstone National Park is one of the world’s primary wildlife preserves and has the greatest concentration of geysers and hot springs in America. Yellowstone National Park is 2,219,789 acres in size (Larger than Rhode Island and Delaware combined). Over 97,600 acres of Yellowstone National Park is located within Gallatin County.

LUXURY REAL ESTATE EXPERT

Delger Real Estate sold over \$155 Million in Real Estate in 2016-2023. Recognized experts in Internet Marketing and Technology, Delger Real Estate are able to generate maximum exposure for their real estate listings. The result: according to ListHub, Delger Real Estate listings outperform 98% of the market. We encourage you to contact Craig to learn more about real estate in Bozeman and the surrounding areas.

POWERED BY INTELLIGENT MARKETING, PROPRIETARY TECHNOLOGY, AND LOCAL EXPERTISE



Craig Delger
BROKER / OWNER
406.581.7504
craigdelger@gmail.com

v1.01-2026-06-25